

LEGEND

- CONCENTRATED FEEDING AREA
- BROAD CORRIDOR
- NARROW TRAVEL ROUTES
- SATELLITE LOCATIONS
- VHF LOCATIONS
- SATELLITE COLLARED COW: 1996
NUMBER, MONTH, DAY AND DIRECT LINE MOVEMENTS
- SATELLITE COLLARED COW: 1997
NUMBER, MONTH, DAY AND DIRECT LINE MOVEMENTS

NOTES

ESTIMATED PASSAGE 1996: 26,000 CARIBOU
ESTIMATED PASSAGE 1997: 80,000 CARIBOU

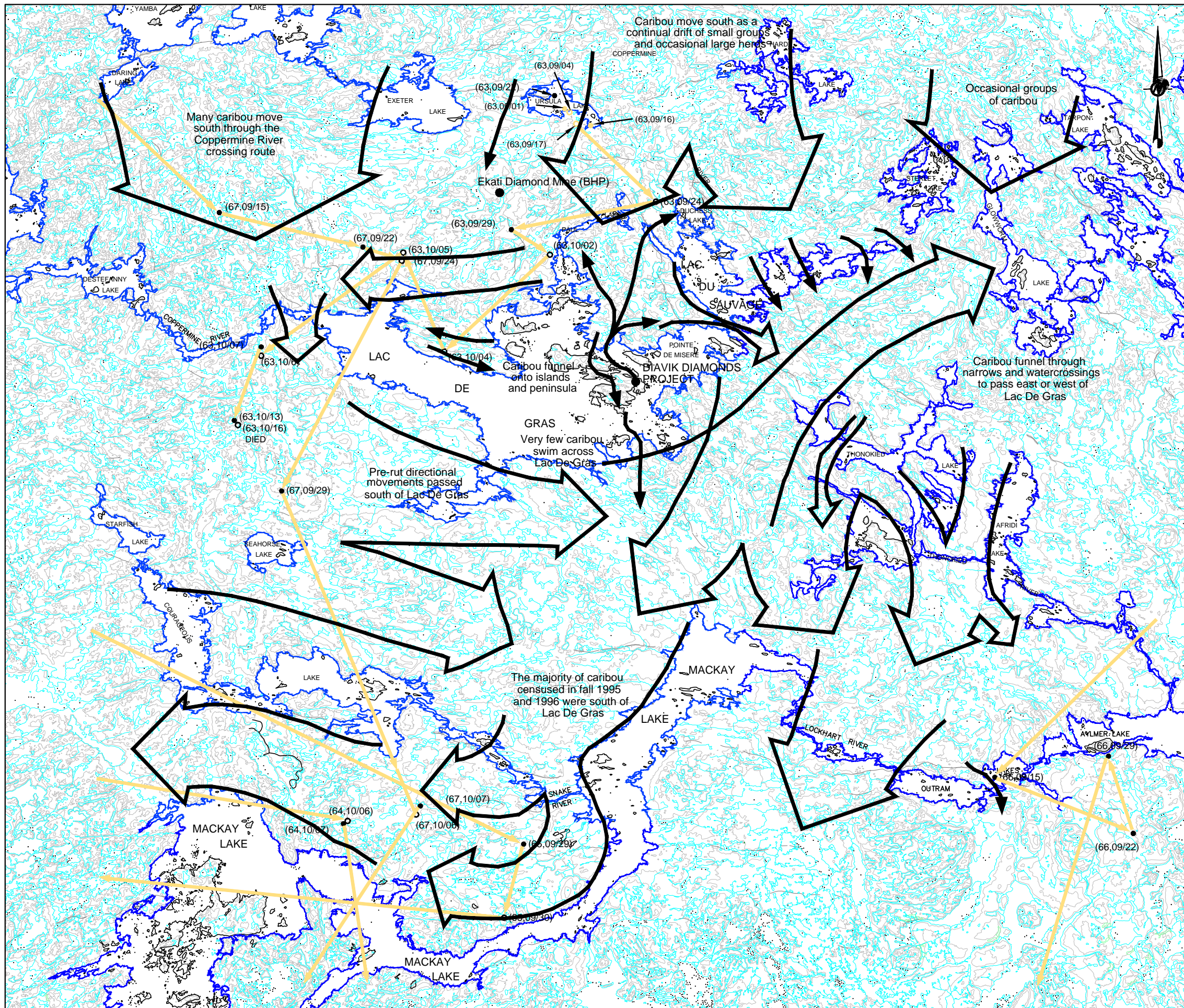
REFERENCE

NATIONAL TOPOGRAPHICAL DATA BASE SETS 76C, 76D, 75M, AND 75N
FROM GEOMATICS CANADA



PROJECT		DIAVIK DIAMOND MINES NORTHWEST TERRITORIES	
TITLE		CARIBOU MID-SUMMER RETURN MOVEMENTS JULY 12 TO 30: 1996 AND 1997 SURVEYS	
PROJECT	09.1328.0021	FILE No.	0913280021C013
DESIGN	TD	04/11/09	SCALE AS SHOWN
CADD	RML	04/11/09	REV. 0
CHECK	TD	13/12/10	FIGURE: 3-22
REVIEW	GM	13/12/10	





LEGEND

- BROAD CORRIDOR
- NARROW TRAVEL ROUTES
- SATELLITE LOCATIONS
- VHF LOCATIONS
- SATELLITE COLLARED COW: 1996 NUMBER, MONTH, DAY AND DIRECT LINE MOVEMENTS

NOTES

ESTIMATED PASSAGE 1995: 100,000 CARIBOU
 ESTIMATED PASSAGE 1996: 90,000 CARIBOU

REFERENCE

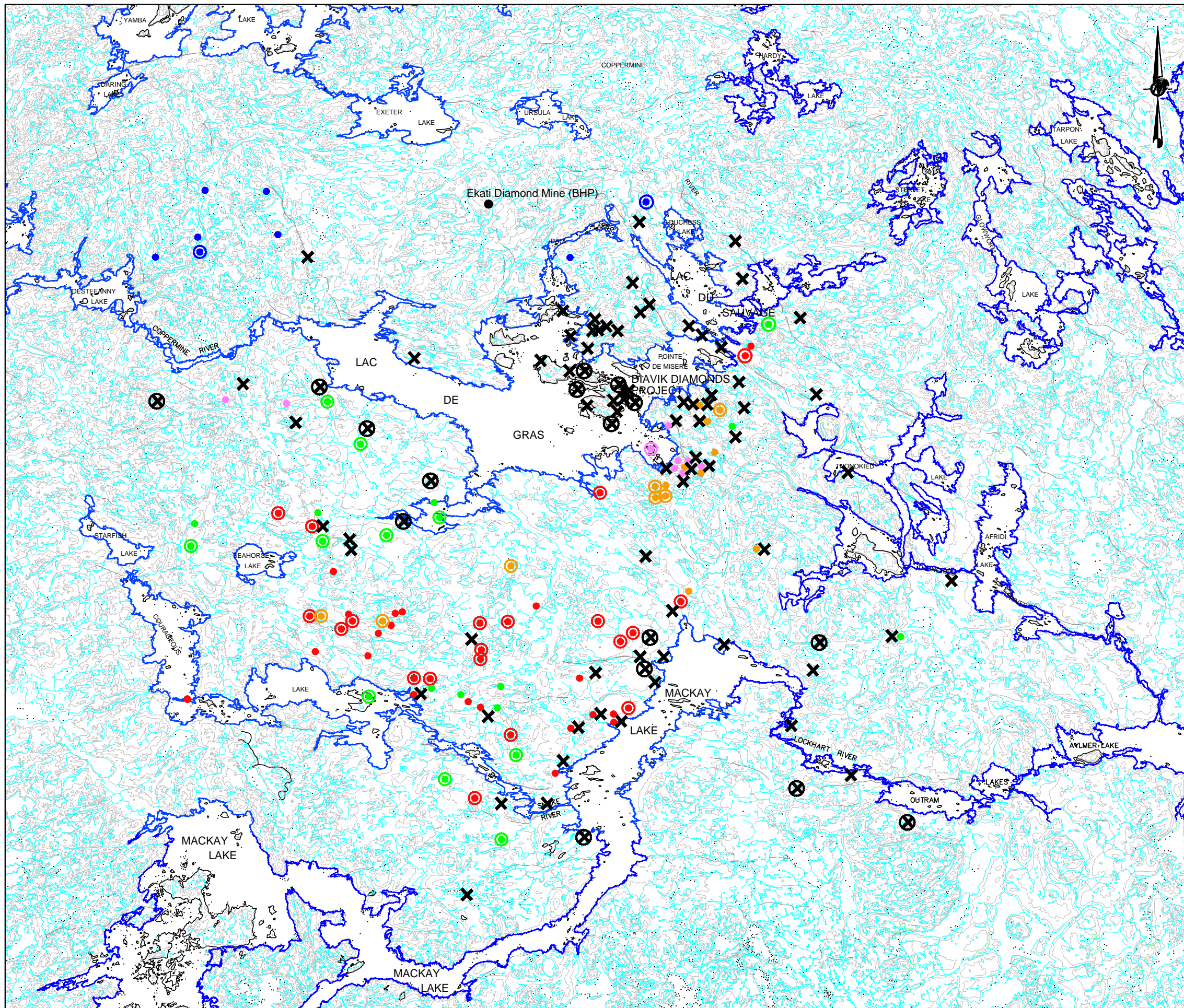
NATIONAL TOPOGRAPHICAL DATA BASE SETS 76C AND 76D, FIRST EDITION SOURCE: GOLDIER ASSOCIATES LTD. 1997a PENNER AND ASSOCIATES LTD.



PROJECT		DIAVIK DIAMOND MINES NORTHWEST TERRITORIES	
TITLE		CARIBOU FALL MOVEMENTS SEPTEMBER 15 TO OCTOBER 15: 1995 AND 1996 SURVEYS	
PROJECT	09.1328.0021	FILE No.	0913280021C014
DESIGN	TD 04/11/09	SCALE	AS SHOWN REV. 0
CADD	RML 04/11/09		
CHECK	TD 13/12/10		
REVIEW	GM 13/12/10		



FIGURE: 3-23



LEGEND

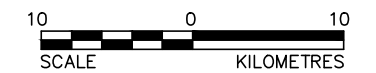
- SASHA - G639
- BOSS - G637
- CHRISSY - G652
- JEFF - G661
- JOSEPH - G636
- X** UNKNOWN BEAR AND COLLARED BEARS WITH <5 LOCATIONS *
- SITES OF HABITAT USE ASSESSMENT

NOTES

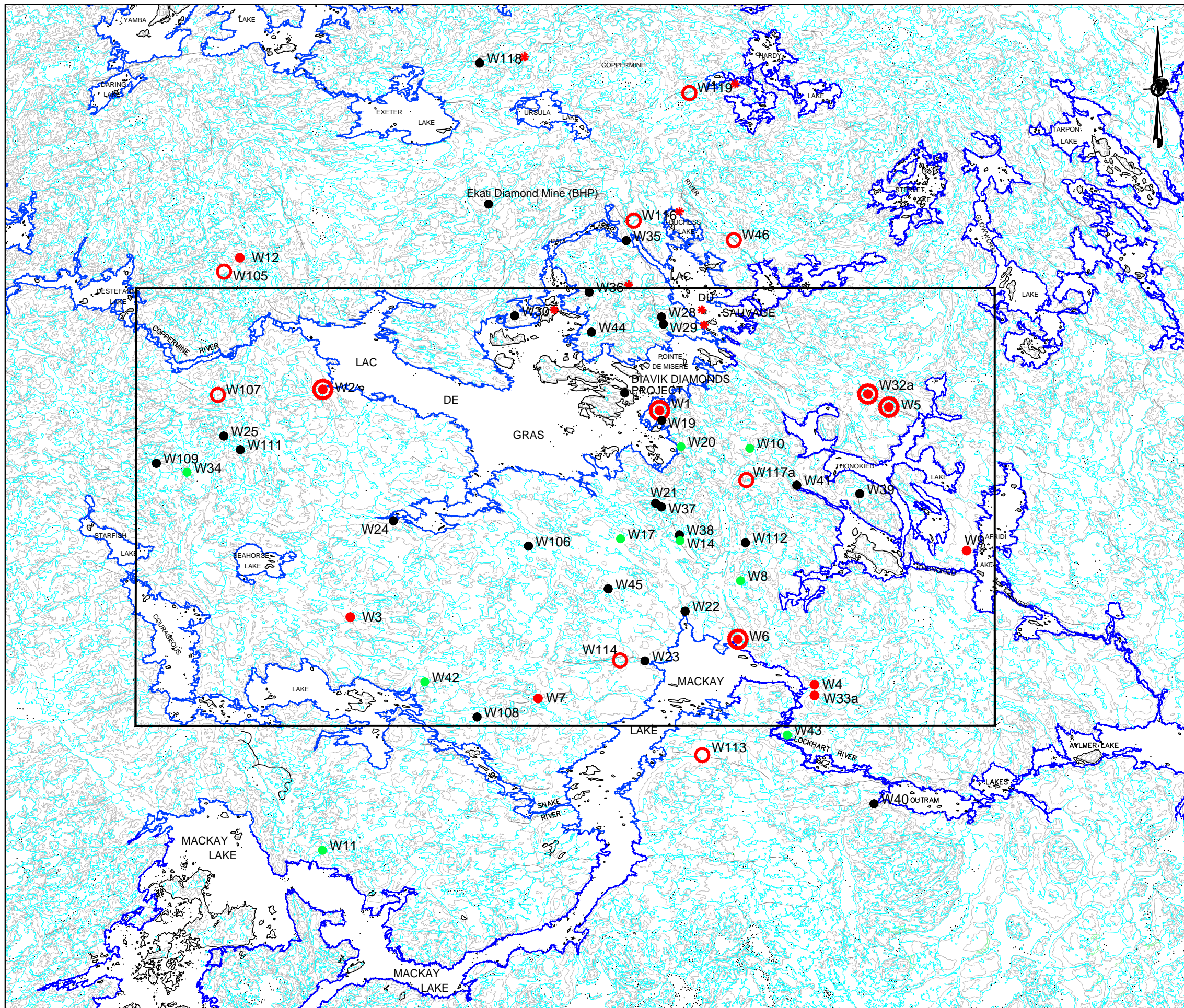
* THE CONCENTRATION OF GRIZZLY BEAR LOCATIONS ON THE EAST ISLAND AND LOCAL STUDY AREA IS DUE TO OPPORTUNISTIC SIGHTINGS IN THE AREA OF MORE INTENSIVE WILDLIFE SURVEY COVERAGE.

REFERENCE

NATIONAL TOPOGRAPHICAL DATA BASE SETS 76C, 76D, 75M, AND 75N
FROM GEOMATICS CANADA
SOURCE: PENNER AND ASSOCIATES



PROJECT		DIAVIK DIAMOND MINES NORTHWEST TERRITORIES	
TITLE		GRIZZLY BEAR LOCATIONS AND HABITAT USE ASSESSMENTS	
	PROJECT	09.1328.0021	FILE No. 0913280021C015
	DESIGN	TD 04/11/09	SCALE AS SHOWN REV. 0
	CADD	RML 04/11/09	
	CHECK	TD 13/12/10	
REVIEW	GM 13/12/10	FIGURE: 3-24	



LEGEND

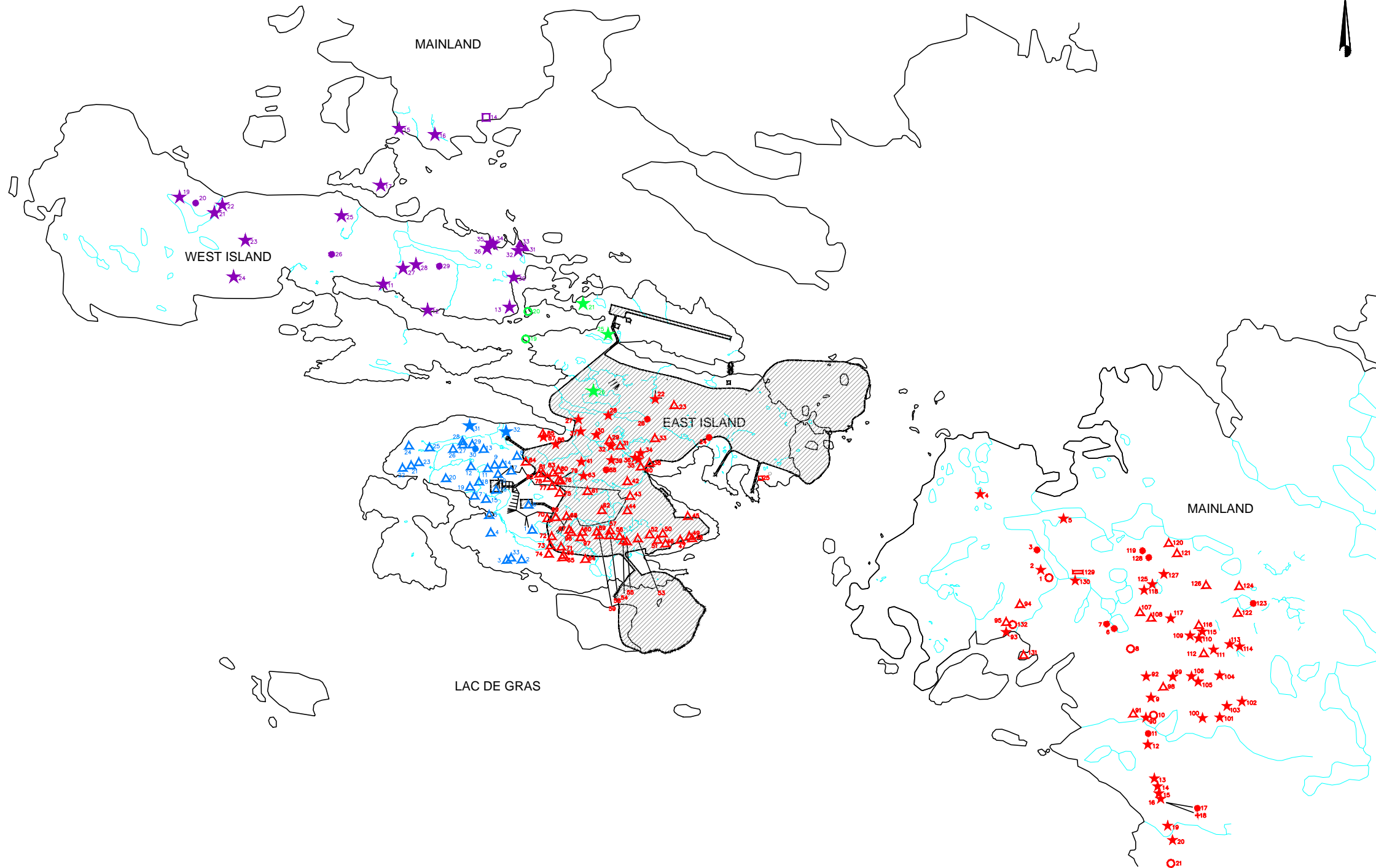
- BOUNDARY OF INTENSIVE DEN SEARCH AREA
- NATAL DEN SITES (1996 & 1997)
- NATAL DEN SITES (1997)
- NATAL DEN SITES (1996)
- ACTIVE DEN SITES
- OLD OR INACTIVE DEN SITES
- W1 DATABASE RECORD
- W30 * SOURCE BHP(1995,1997)
- W32a ALTERNATE NATAL DEN

REFERENCE
 NATIONAL TOPOGRAPHICAL DATA BASE SETS 76C, 76D, 75M, AND 75N
 FROM GEOMATICS CANADA
 SOURCE: PENNER AND ASSOCIATES



PROJECT	DIAVIK DIAMOND MINES NORTHWEST TERRITORIES		
TITLE	WOLF DEN SITES		
	PROJECT	09.1328.0021	FILE No. 0913280021C016
	DESIGN	TD 04/11/09	SCALE AS SHOWN REV. 0
	CADD	RML 04/11/09	
	CHECK	TD 13/12/10	
REVIEW	GM 13/12/10	FIGURE: 3-25	

L:\2009\1328 Yknife\09-1328-0021\11000\Report C 11100\Fig 3-26 0913280021C017 Archaeological Sites and Mine Footprint.dwg Dec 15, 2010 - 9:36am



LEGEND

★	ARTIFACT SCATTER	■	LcNs
△	QUARRY SITE	■	LcNt
●	ISOLATED FIND	■	LdNs
□	STONE FEATURE/BURIAL	■	LdNt
○	CAMP SITE		
▲	CAMP SITE (HEARTHES)		
≡	WOODEN POLES		
+	BURIAL SITE		
▨	PROJECT FOOTPRINT		

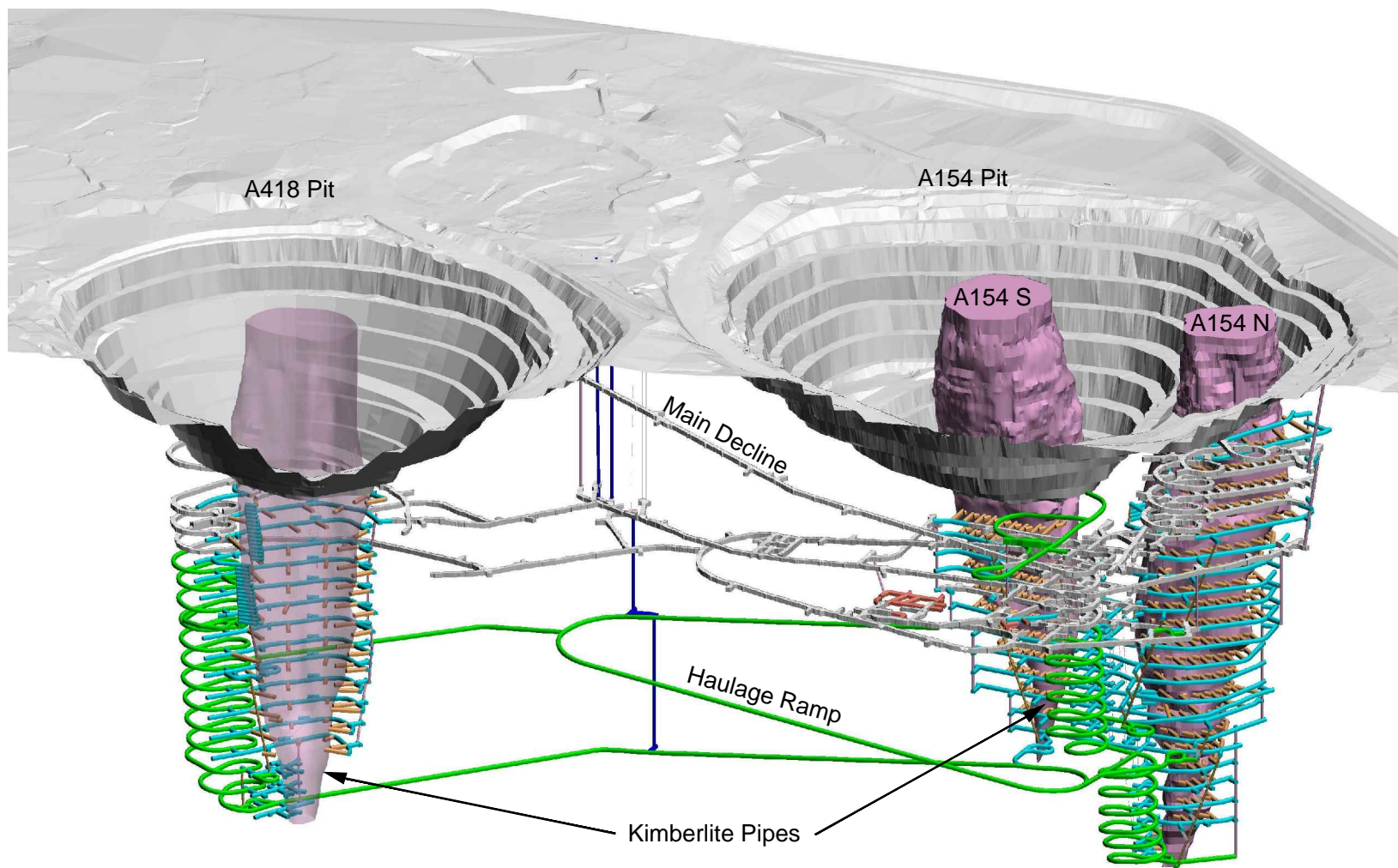
NOTE
MAP IN NAD27 COORDINATE SYSTEM.

REFERENCE
BORDEN LOCATIONS SUPPLIED BY FEDIRCHUK McCULLOUGH & ASSOCIATES LTD.



PROJECT		DIAVIK DIAMOND MINES NORTHWEST TERRITORIES			
TITLE		ARCHAEOLOGICAL SITES AND MINE FOOTPRINTS			
PROJECT		09.1328.0021	FILE No.		0913280021C017
DESIGN	TD	04/11/09	SCALE	AS SHOWN	REV. 0
CADD	RML	12/11/09			
CHECK	TD	13/12/10	FIGURE: 3-26		
REVIEW	GM	13/12/10			



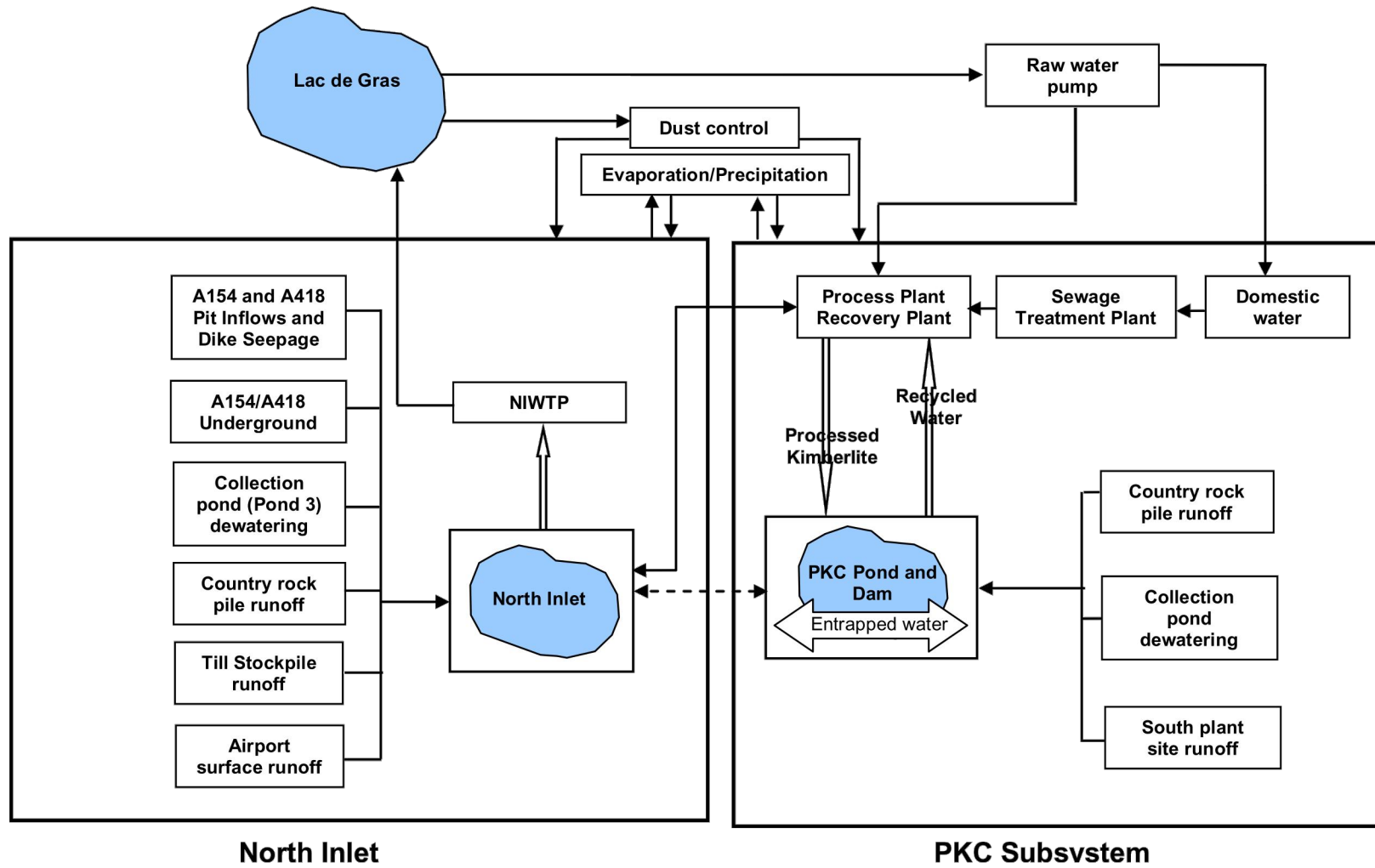


SCHEMATIC ONLY, NOT TO SCALE


PROJECT		DIAVIK DIAMOND MINES NORTHWEST TERRITORIES			
TITLE		OPEN-PIT AND UNDERGROUND MINE DESIGN			
PROJECT	06-1328-001	FILE No.	0913280021C018		
DESIGN	TD	30/10/09	SCALE	N.T.S.	REV. 0
CADD	JEF	18/11/09	FIGURE 4-1		
CHECK	TD	13/12/10			
REVIEW	GM	13/12/10			

SOURCE
IMAGE PROVIDED BY DDMI.



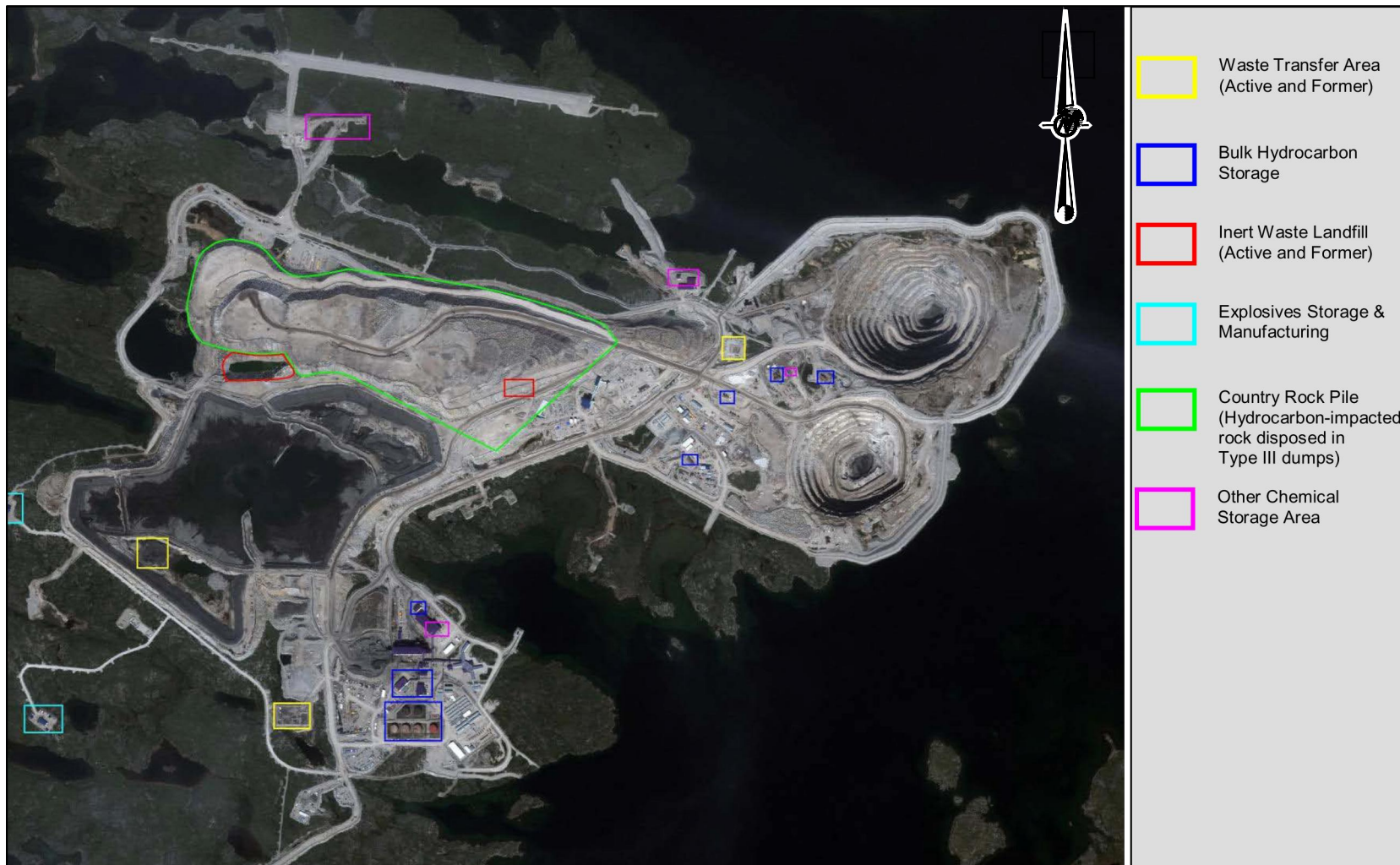


SCHMATIC ONLY, NOT TO SCALE


PROJECT					DIAVIK DIAMOND MINES NORTHWEST TERRITORIES				
TITLE					CONCEPTUAL WATER MANAGEMENT SYSTEM				
PROJECT No. 06-1328-0021			FILE No. 0913280021C019		DESIGN TD 30/10/09			SCALE N.T.S. REV. 0	
CADD TRE 26/11/09			CHECK TD 13/12/10		REVIEW GM 13/12/10			FIGURE 4-2	
									

NOTES

SOUTH COUNTRY ROCK PILE PONDS NOT INCLUDED.

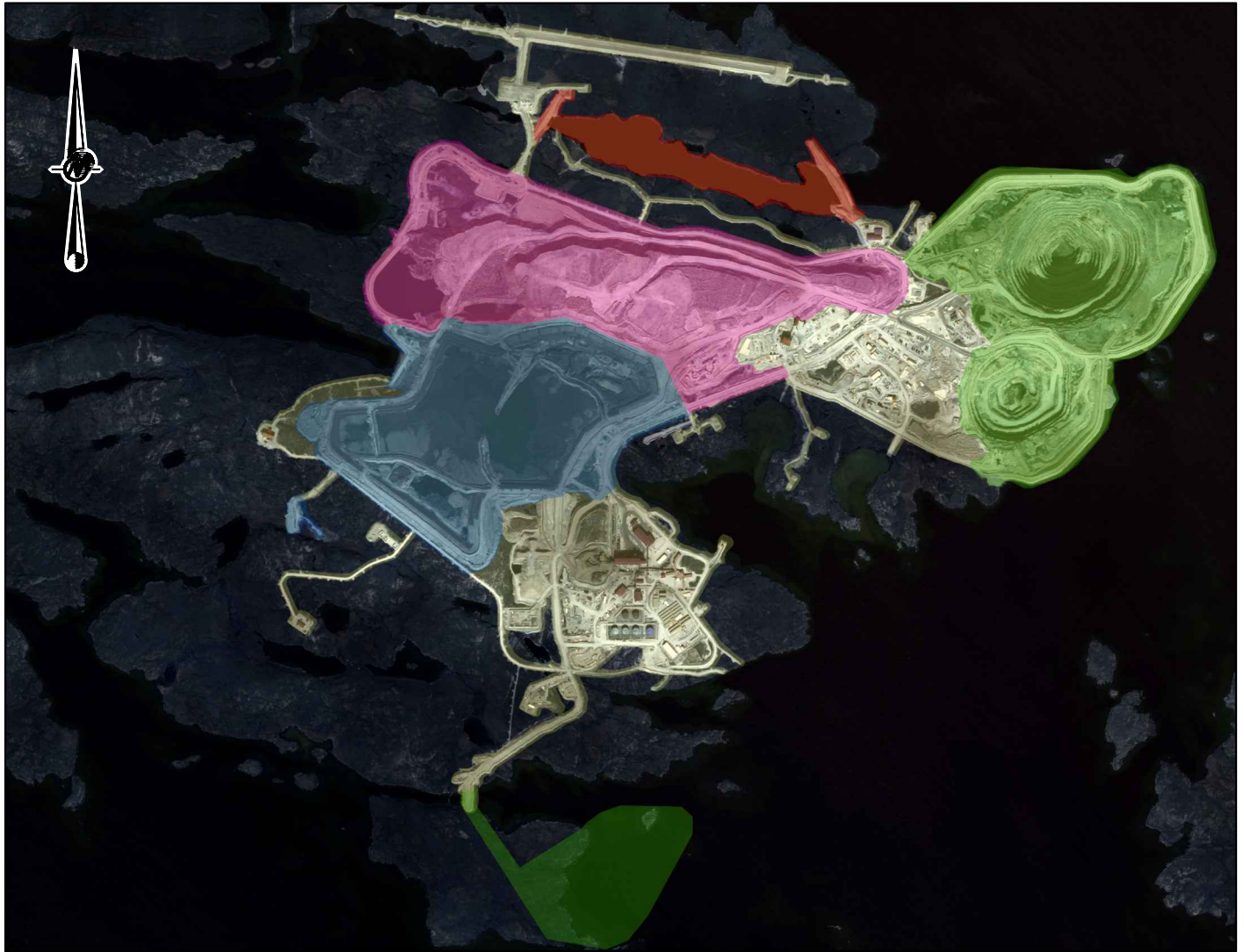


SCHEMATIC ONLY, NOT TO SCALE






PROJECT					DIAVIK DIAMOND MINES NORTHWEST TERRITORIES						
TITLE					AREAS WITH POTENTIAL FOR CONTAMINATED MATERIALS AT CLOSURE						
PROJECT No. 06-1328-0021			FILE No. 0913280021C046								
DESIGN	TD	03/12/10	SCALE	N.T.S.						REV.	0
CADD	JEF	06/12/10	FIGURE 4-3								
CHECK	TD	13/12/10									
REVIEW	GM	13/12/10									

REFERENCE

ORIGINAL DRAWING PROVIDED BY DDMI.

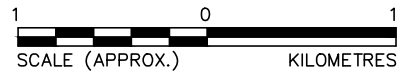


LEGEND

-  MINE INFRASTRUCTURE AREAS
-  NORTH INLET AREA
-  OPEN PIT, UNDERGROUND AND DIKE AREAS
-  PKC AREA
-  WASTEROCK AND TILL AREA

SOURCE

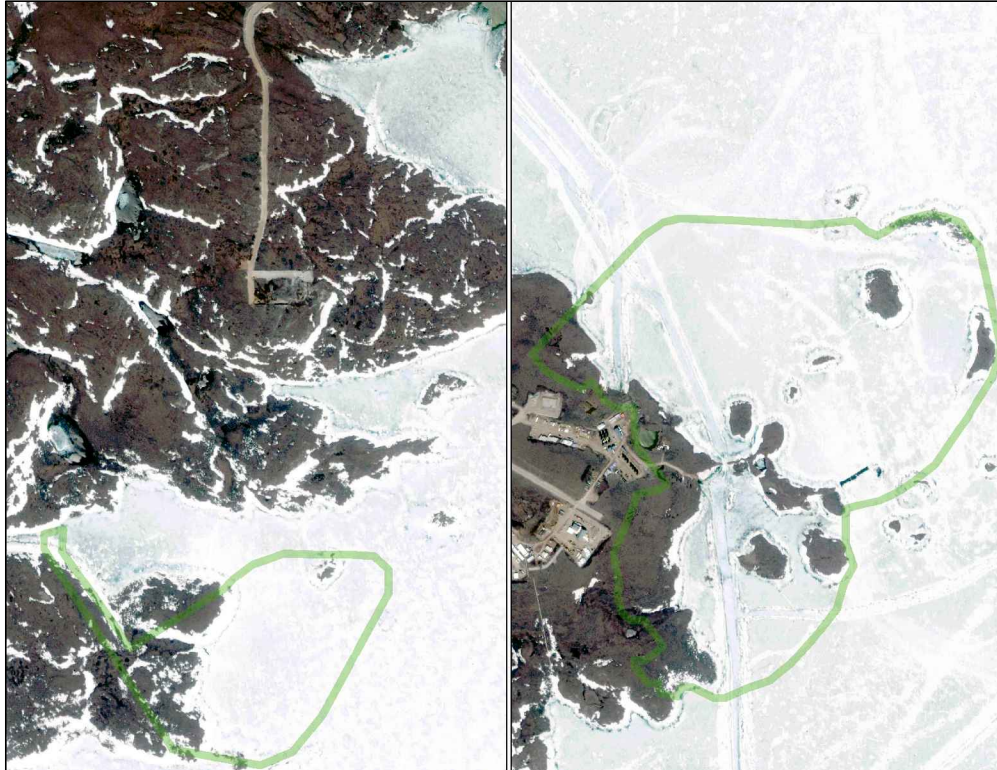
IMAGE PROVIDED BY DDMI



PROJECT		DIAVIK DIAMOND MINES NORTHWEST TERRITORIES			
TITLE		AREA DESIGNATIONS FOR CLOSURE PLANNING			
PROJECT		09.1321.0028		FILE No. 0913280021C020	
DESIGN	TD	28/10/09		SCALE	AS SHOWN
CADD	JEF	13/11/09		REV.	0
CHECK	TD	13/12/10		FIGURE: 5-1	
REVIEW	GM	13/12/10			



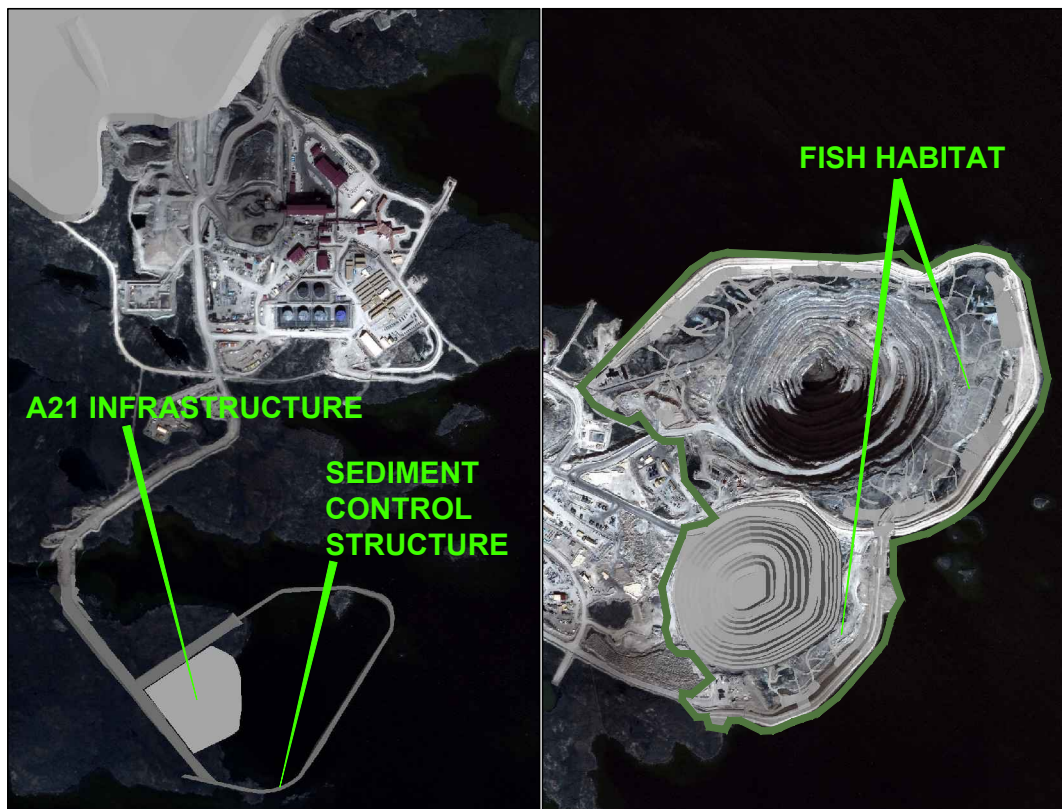
**FIGURE 5-2a
PRE-DEVELOPMENT
(2000)**



**FIGURE 5-2b
EXISTING DEVELOPMENT
(2009)**



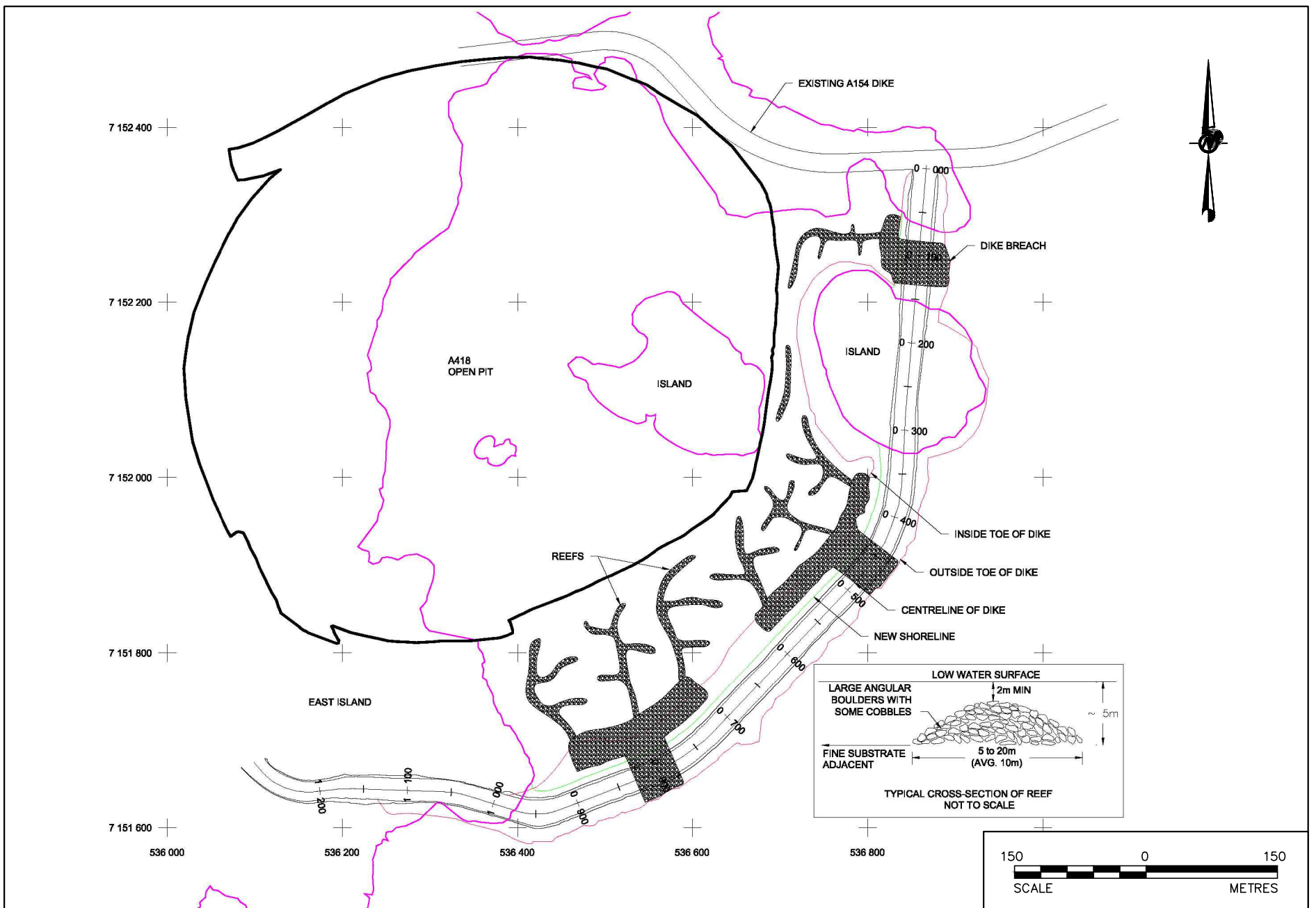
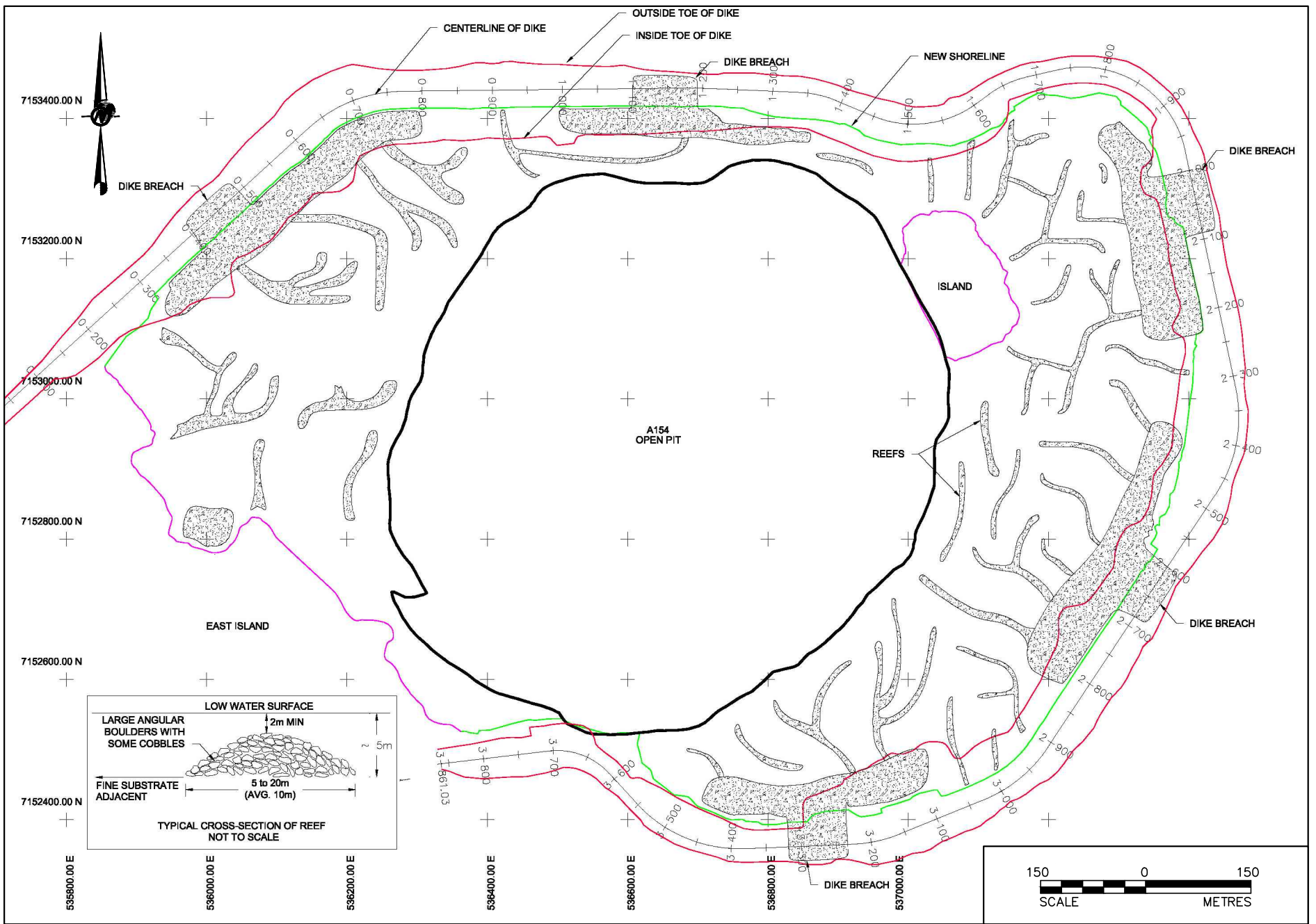
**FIGURE 5-2c
FINAL DEVELOPMENT
(2022)**



SOURCE
IMAGES PROVIDED BY DDMI

PROJECT		DIAVIK DIAMOND MINES NORTHWEST TERRITORIES	
TITLE		OPEN PIT, UNDERGROUND AND DIKE AREAS - SITE DEVELOPMENT	
PROJECT	09.1328.0021	FILE No.	0913280021C021
DESIGN	TD	11/11/09	SCALE AS SHOWN REV. 0
CADD	TRE	25/11/09	
CHECK	TD	13/12/10	
REVIEW	GM	13/12/10	

FIGURE: 5-2




SOURCE
PLAN DEVELOPED FROM INFORMATION PROVIDED BY DDMI.

PROJECT		DIAVIK DIAMOND MINES NORTHWEST TERRITORIES	
TITLE		FISH HABITAT DESIGN - A154/A418 DIKE AREAS	
PROJECT	09.1328.0021	FILE No.	0913280021C022
DESIGN	TD 04/11/09	SCALE	AS SHOWN REV. 0
CADD	JEF 23/11/09	FIGURE: 5-3	
CHECK	TD 13/12/10		
REVIEW	GM 13/12/10		


DIAVIK
DIAMOND MINES INC.



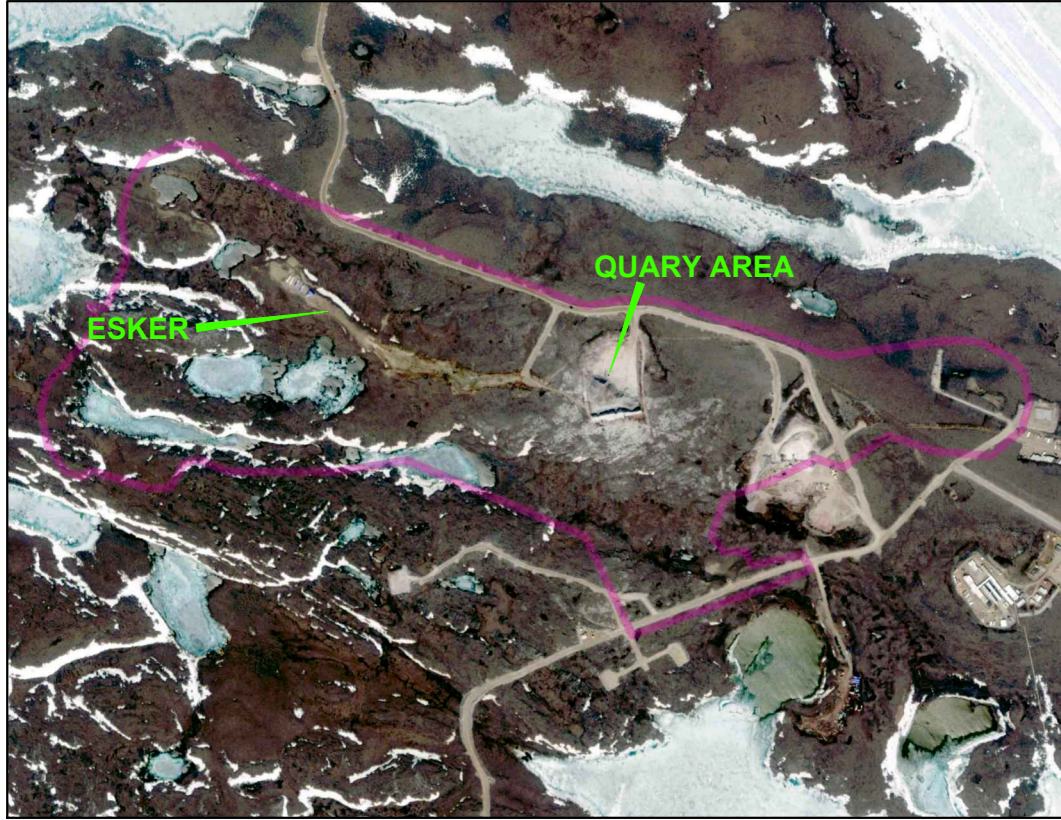
PROJECT		DIAVIK DIAMOND MINES NORTHWEST TERRITORIES			
TITLE		PREFERRED FINAL OPEN-PIT, UNDERGROUND AND DIKE AREA LANDSCAPE			
	PROJECT	09.1328.0021	FILE No.	0913280021C023	
	DESIGN	TD	20/11/09	SCALE	AS SHOWN
	CADD	JEF	06/12/10	REV.	0
	CHECK	TD	13/12/10	FIGURE: 5-4	
	REVIEW	GM	13/12/10		

SOURCE
IMAGE PROVIDED BY DDMI

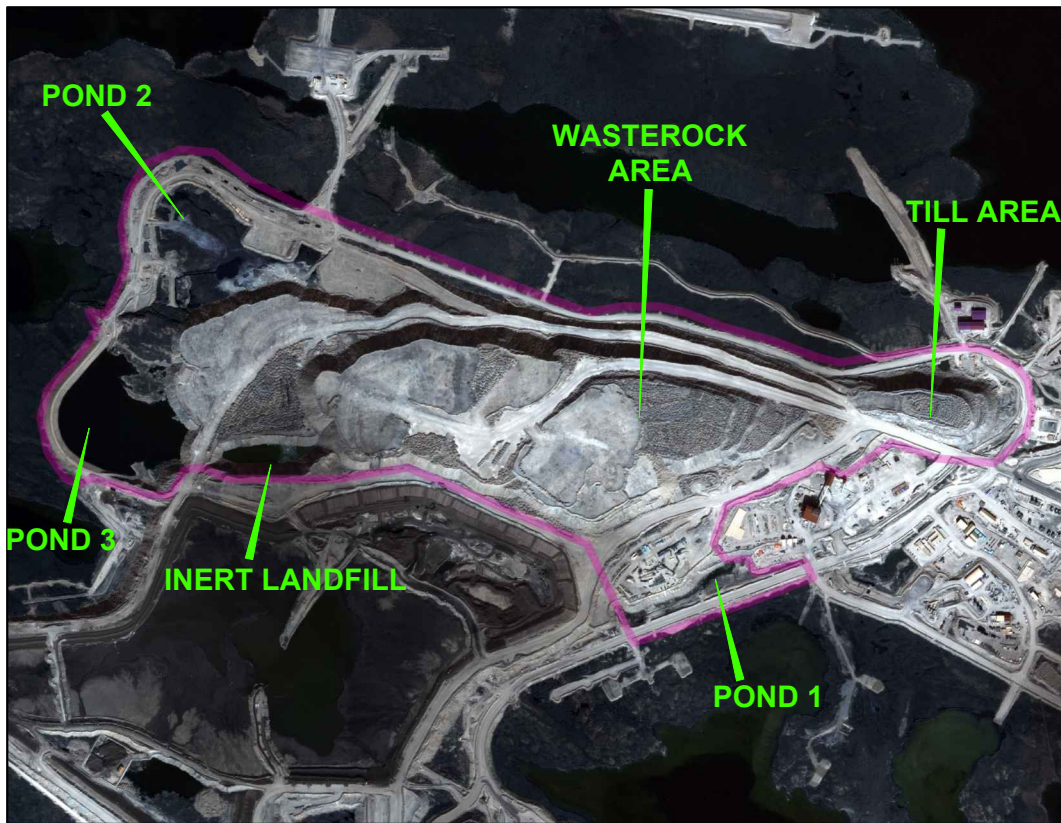
Activity	2010	2011	2012	2013	2014	2015	2016	2017	2018	2019	2020	2021	2022	2023	2024	2025	2026	2027	2028	2029	2030
Open Pit Mining A418/A154																					
Underground A418/A154																					
Wet Mining - A21																					
Engineering/Environmental Studies																					
Community & Regulator Engagement																					
Final Design Concepts																					
Detailed Engineering																					
Complete Fish Habitat Construction																					
Decommission Surface Mine Infrastructure																					
Decommission Underground																					
Flood Mine Areas - Clarify Water																					
Decommission Dikes/Sediment Control Structure																					
Performance Monitoring																					
Engineering Inspections																					
Effects Monitoring																					
Reporting																					

PROJECT		DIAVIK DIAMOND MINES NORTHWEST TERRITORIES			
TITLE		CLOSURE ACTIVITY SCHEDULE OPEN-PIT, UNDERGROUND AND DIKE AREAS			
	PROJECT No.	09.1328.0021	FILE No.	0913280021A024	
	DESIGN	TD	25/11/09	SCALE	N.T.S. REV. 0
	CADD	JEF	03/12/10	FIGURE 5-5	
	CHECK	TD	13/12/10		
	REVIEW	GM	13/12/10		

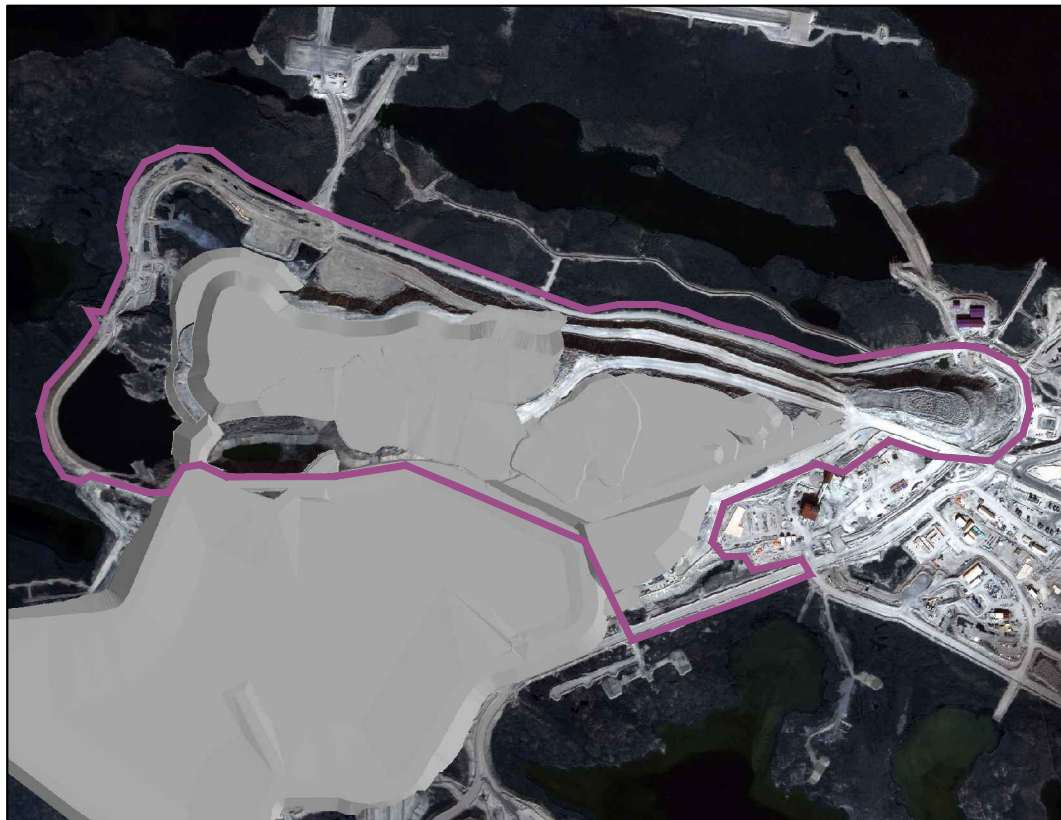
**FIGURE 5-6a
PRE-DEVELOPMENT
(2000)**



**FIGURE 5-6b
EXISTING DEVELOPMENT
(2009)**



**FIGURE 5-6c
FINAL DEVELOPMENT
(2022)**



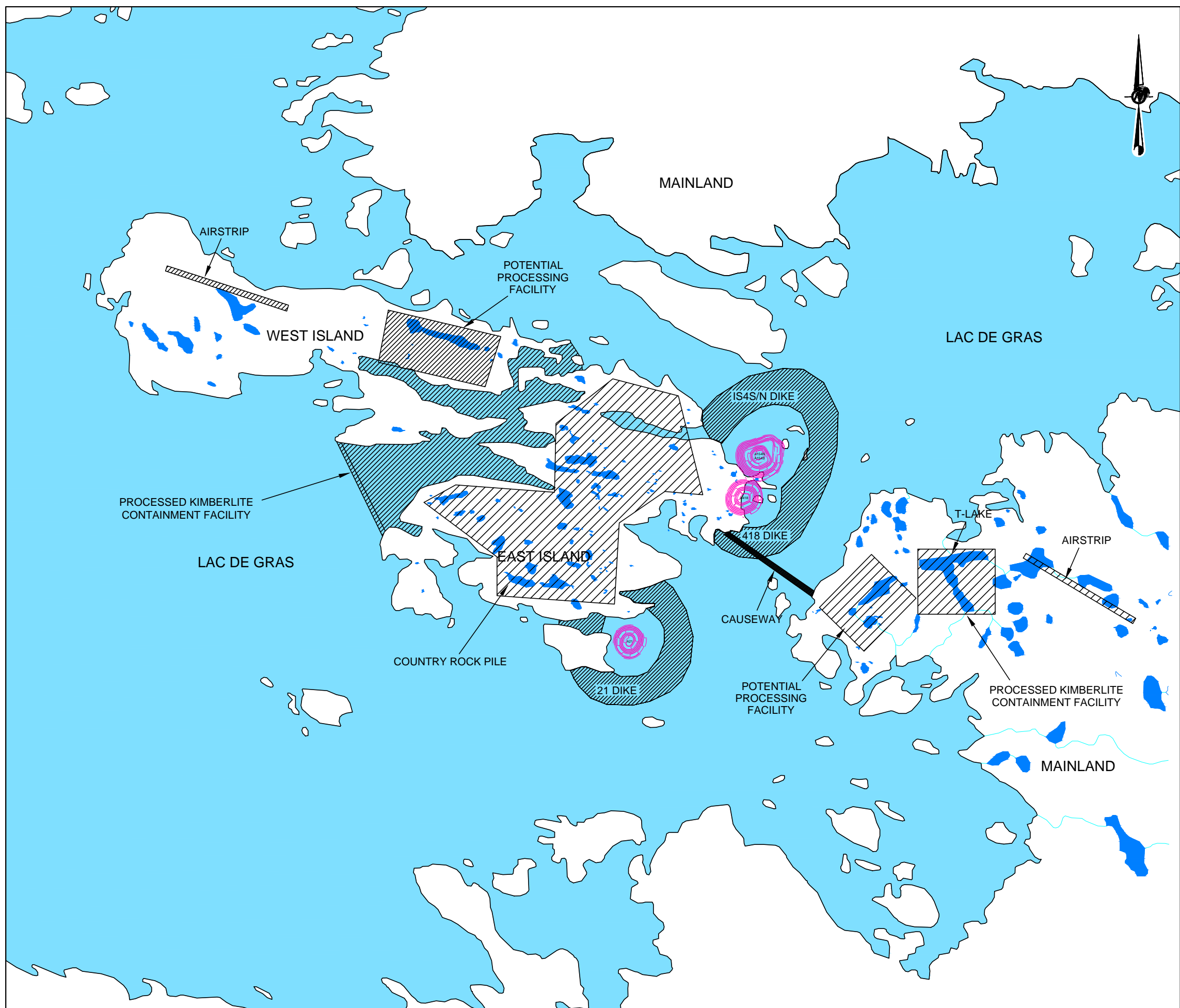
SOURCE
IMAGES PROVIDED BY DDMI

PROJECT		DIAVIK DIAMOND MINES NORTHWEST TERRITORIES	
TITLE		WASTE ROCK AND TILL AREA - SITE DEVELOPMENT	
PROJECT	09.1328.0021	FILE No.	0913280021C025
DESIGN	TD	11/11/09	SCALE AS SHOWN REV. 0
CADD	TRE	26/11/09	
CHECK	TD	13/12/10	
REVIEW	GM	13/12/10	



FIGURE: 5-6

L:\2009\1328_Yknife\09-1328-0021\11000\Report C 11100\Fig 5-7_0913280021C026_Processed Kimberlite containment and Waste Rock Siting options.dwg Dec 15, 2010 - 10:01am

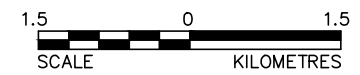


LEGEND

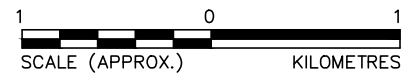
- LAC DE GRAS OPTION
- T-LAKE OPTION

REFERENCE

NATIONAL TOPOGRAPHICAL DATA BASE SETS 76C AND 76D, FIRST EDITION.



PROJECT		DIAVIK DIAMOND MINES NORTHWEST TERRITORIES			
TITLE		PROCESSED KIMBERLITE CONTAINMENT AND WASTE ROCK ORIGINAL SITING OPTIONS			
	PROJECT	09.1328.0021	FILE No.	0913280021C026	
	DESIGN	TD	04/11/09	SCALE	AS SHOWN
	CADD	RML	12/11/09	REV.	0
	CHECK	TD	13/12/10	FIGURE: 5-7	
REVIEW	GM	13/12/10			

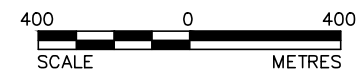
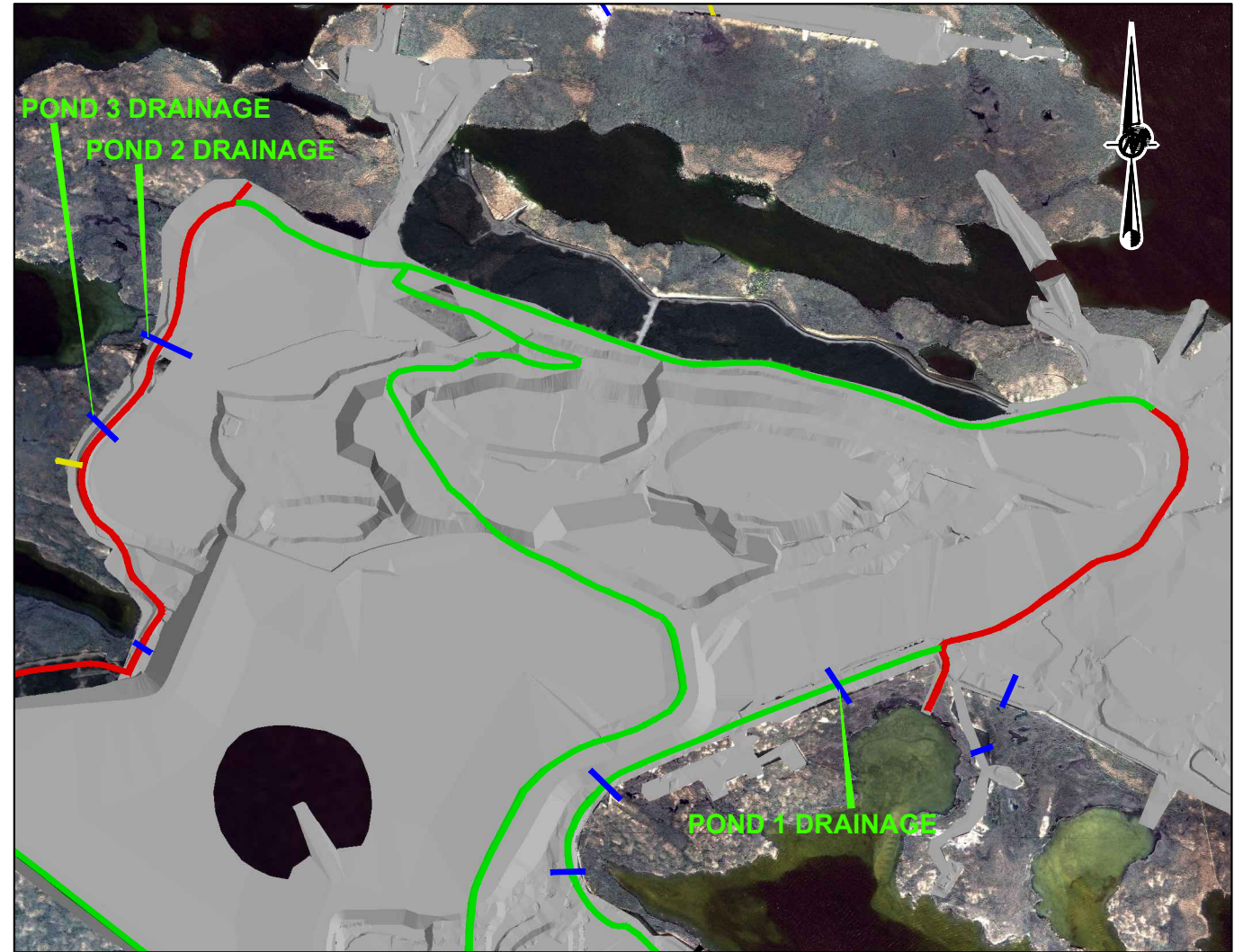


PROJECT		DIAVIK DIAMOND MINES NORTHWEST TERRITORIES			
TITLE		WASTE ROCK TILL AREA DRAINAGE BASINS			
PROJECT		09.1328.0021	FILE No. 0913280021C027		
DESIGN	TD	28/10/09	SCALE	AS SHOWN	REV. 0
CADD	TRE	25/11/09	FIGURE: 5-8		
CHECK	TD	13/12/10			
REVIEW	GM	13/12/10			

SOURCE
IMAGE PROVIDED BY DDMI



NOT TO SCALE



LEGEND

- SPRING AND FALL MIGRATION
- DRAINAGE RESTORED
- ROAD CROSSING/ACCESS
- FALL MIGRATION


SOURCE

IMAGES PROVIDED BY DDMI

PROJECT		DIAVIK DIAMOND MINES NORTHWEST TERRITORIES			
TITLE		PREFERRED FINAL WASTE ROCK AND TILL AREA LANDSCAPES			
PROJECT		09.1328.0021	FILE No.		0913280021C028
DESIGN	TD	20/11/09	SCALE	AS SHOWN	REV. 0
CADD	JEF	09/12/10			
CHECK	TD	13/12/10	FIGURE: 5-9		
REVIEW	GM	13/12/10			



Activity	2010	2011	2012	2013	2014	2015	2016	2017	2018	2019	2020	2021	2022	2023	2024	2025	2026	2027	2028	2029	2030
Engineering/Environmental Studies	■	■	■	■	■																
Performance Monitoring			■	■	■	■	■	■	■	■	■	■	■	■	■	■					
Community & Regulator Engagement		■		■		■					■		■							■	■
Final Design Concepts						■															
Detailed Engineering								■													
Wildlife Access, Contouring, Cover								■	■	■	■	■	■	■							
Decomission Collection Ponds												■									
Engineering Inspections													■	■	■	■					
Effects Monitoring														■			■			■	
Reporting													■	■	■	■				■	

PROJECT		DIAVIK DIAMOND MINES NORTHWEST TERRITORIES			
TITLE		CLOSURE ACTIVITY SCHEDULE WASTE ROCK AND TILL AREA			
	PROJECT No.	09.1328.0021		FILE No.	0913280021C029
	DESIGN	TD	25/11/09	SCALE	N.T.S. REV. D
	CADD	JEF	03/12/10		
	CHECK	TD	13/12/10		
	REVIEW	GM	13/12/10		
			FIGURE 5-10		

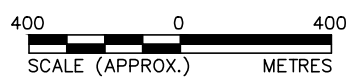
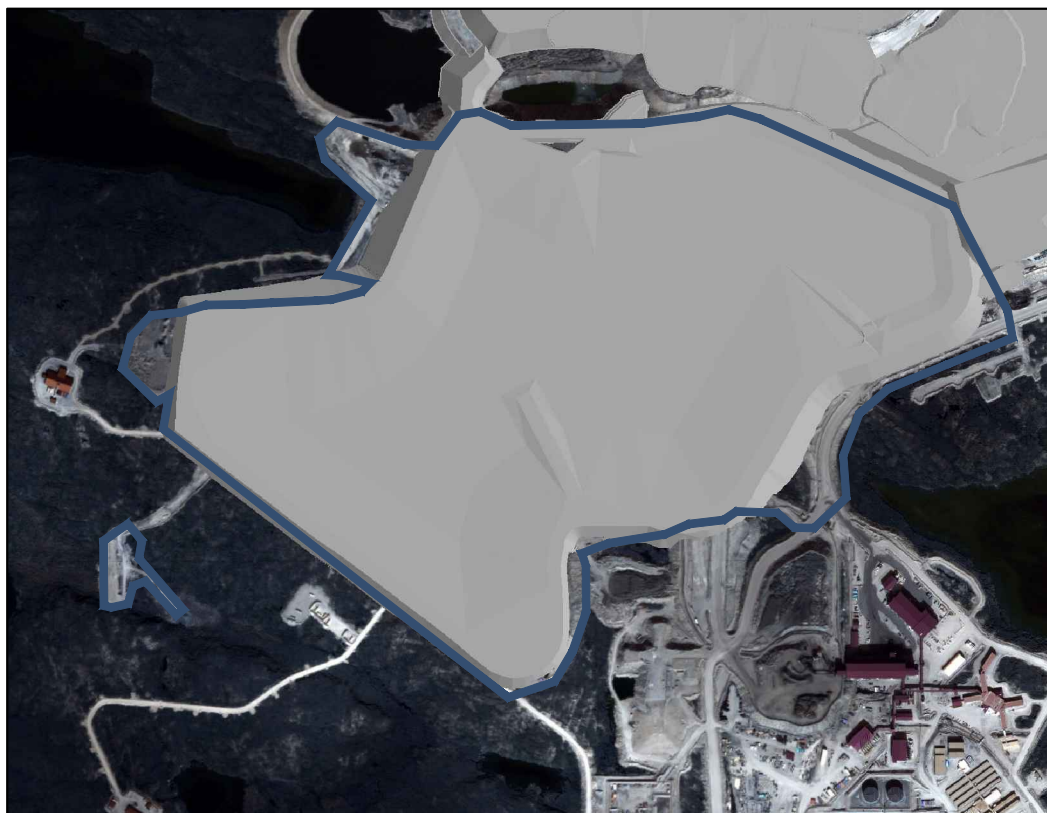
**FIGURE 5-11a
PRE-DEVELOPMENT
(2000)**



**FIGURE 5-11b
EXISTING DEVELOPMENT
(2009)**



**FIGURE 5-11c
FINAL DEVELOPMENT
(2022)**



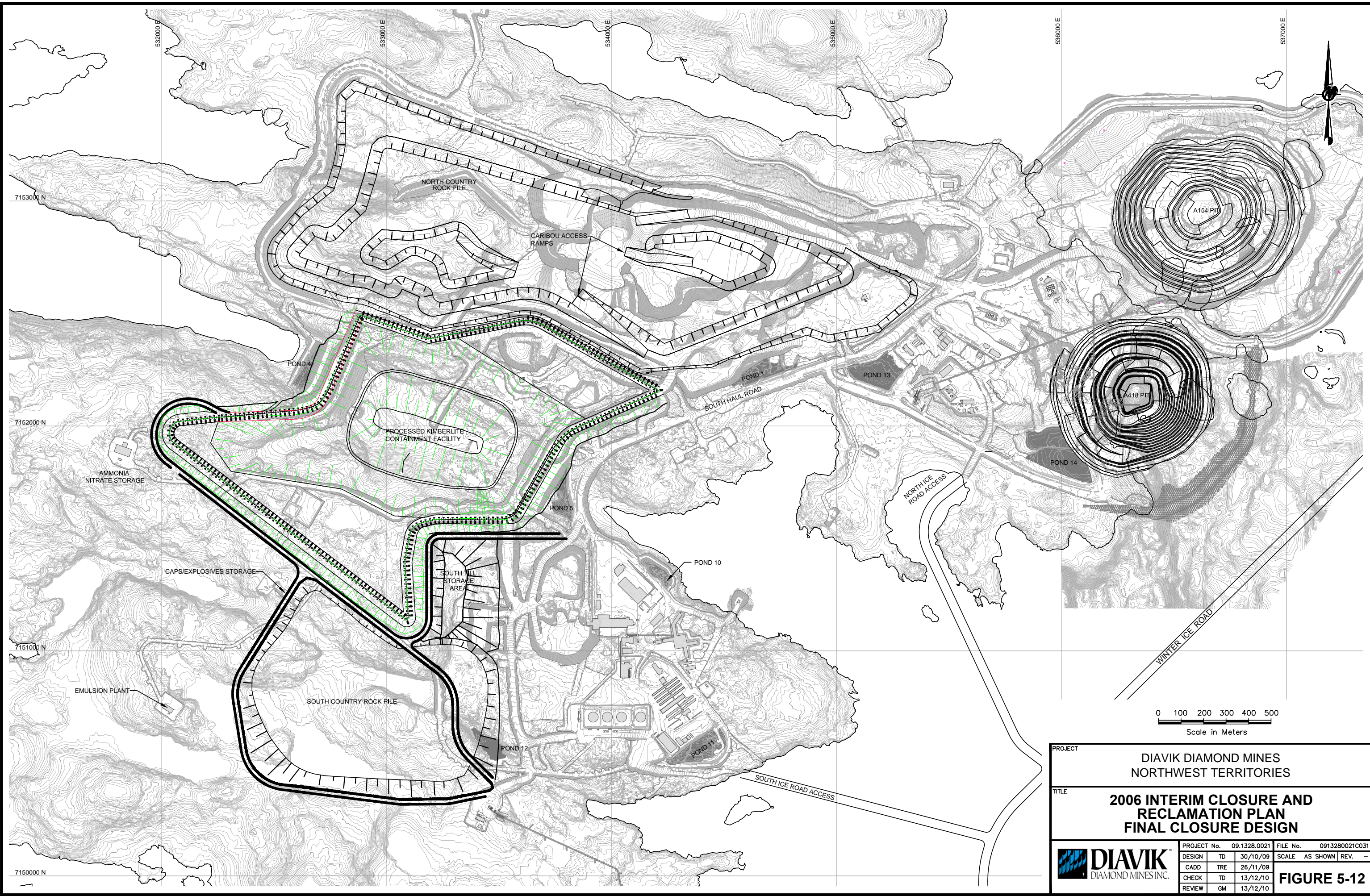
SOURCE
IMAGES PROVIDED BY DDMI

PROJECT		DIAVIK DIAMOND MINES NORTHWEST TERRITORIES	
TITLE		PROCESSED KIMBERLITE CONTAINMENT AREA - SITE DEVELOPMENT	
PROJECT	09.1328.0021	FILE No.	0913280021C030
DESIGN	TD	11/11/09	SCALE AS SHOWN REV. 0
CADD	TRE	26/11/09	
CHECK	TD	13/12/10	
REVIEW	GM	13/12/10	



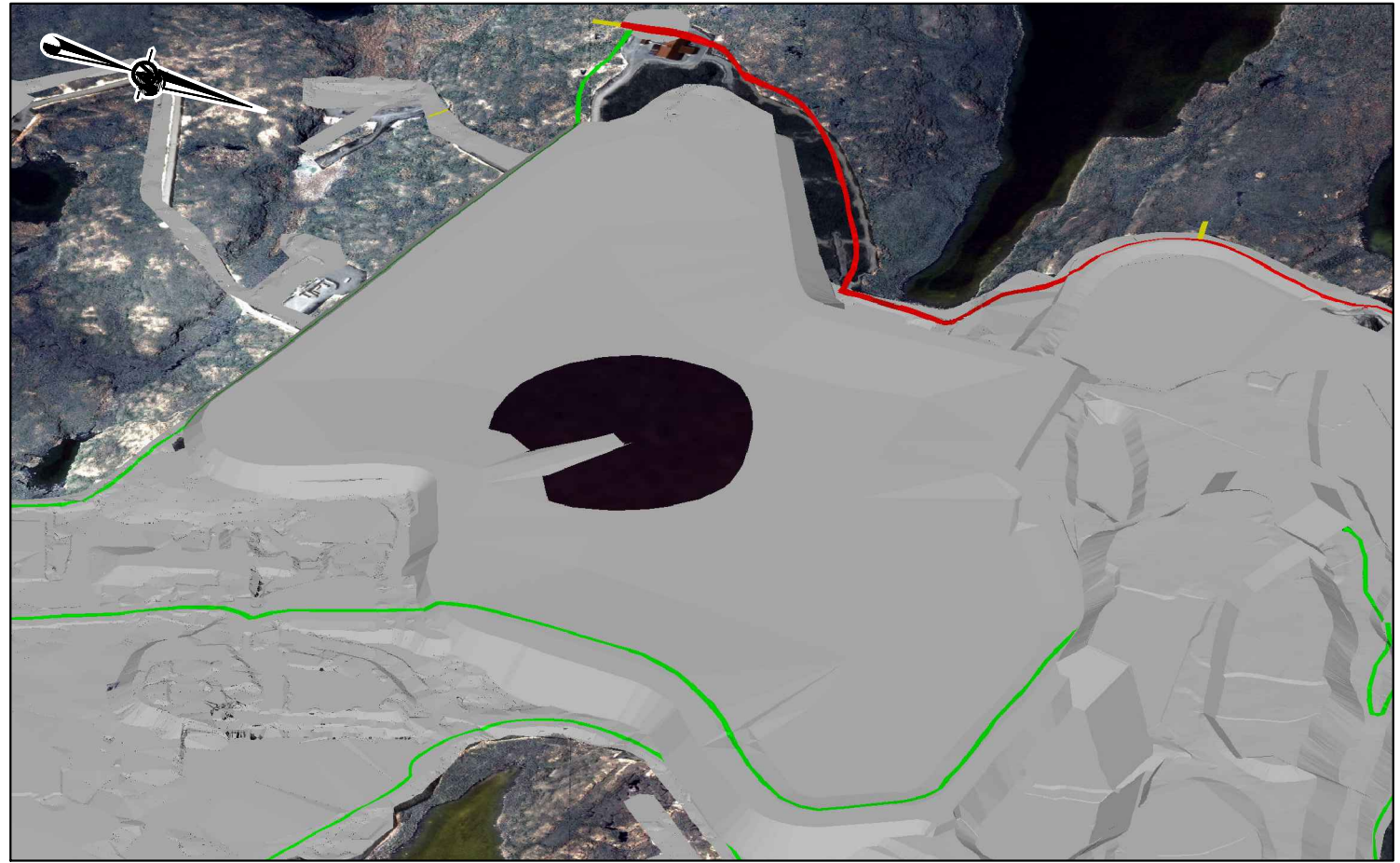
FIGURE: 5-11

L:\2009\1328 Yknife\09-1328-0021\11000\Report C 11100\Fig 5-12 0913280021C031 Final Closure.dwg Dec 15, 2010 - 9:46am

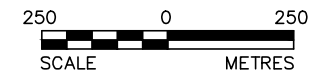


PROJECT		DIAVIK DIAMOND MINES NORTHWEST TERRITORIES	
TITLE		2006 INTERIM CLOSURE AND RECLAMATION PLAN FINAL CLOSURE DESIGN	
PROJECT No. 09.1328.0021		FILE No. 0913280021C031	
DESIGN	TD	30/10/09	SCALE AS SHOWN
CADD	TRE	26/11/09	REV. -
CHECK	TD	13/12/10	FIGURE 5-12
REVIEW	GM	13/12/10	

L:\2009\1328_Yknife\09-1328-0021\11000\Report_C_11100\Fig 5-13_0913280021C032_Preferred_Final_PKG_Landscape.DWG Dec 15, 2010 - 9:47am



NOT TO SCALE



LEGEND

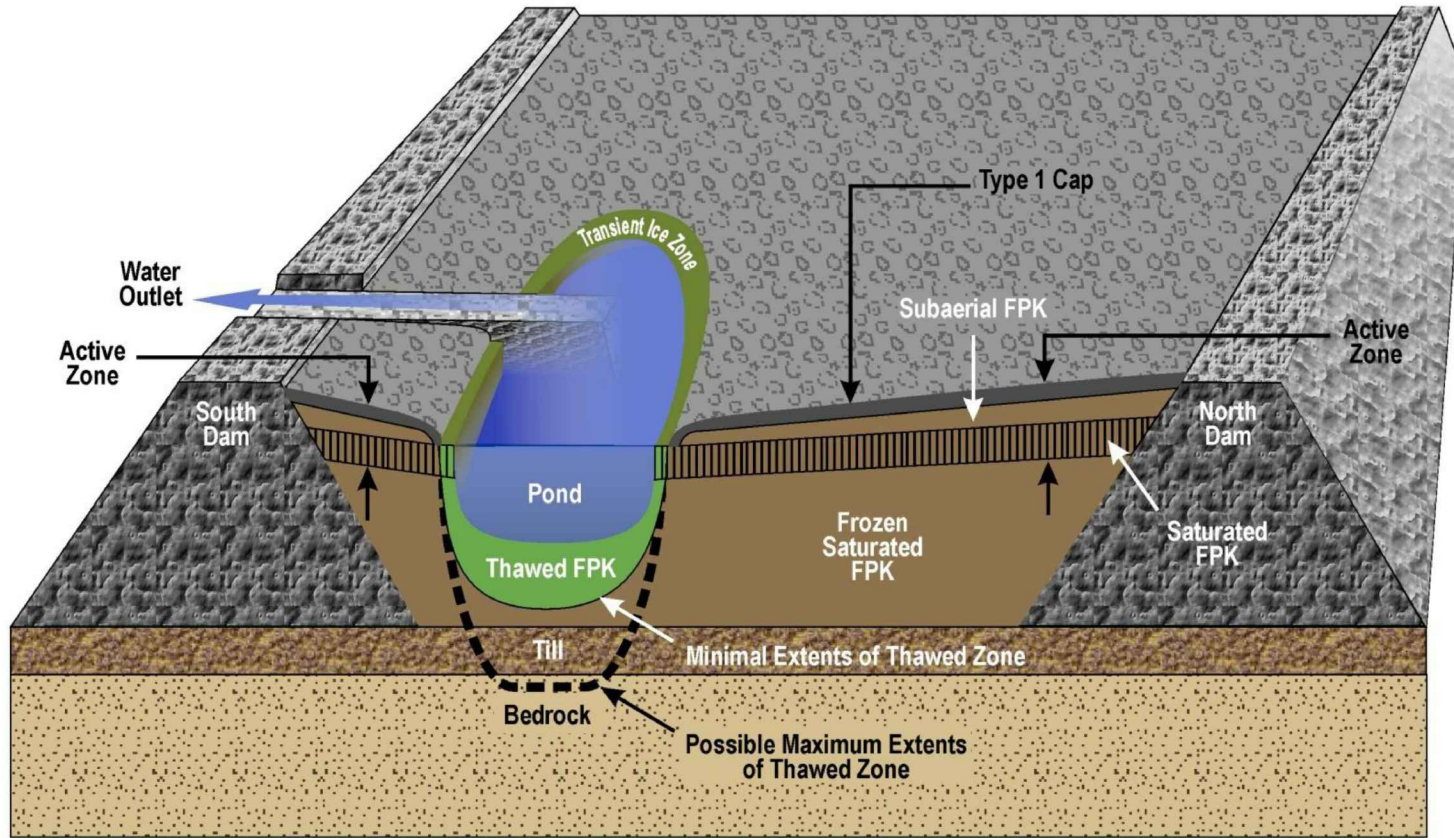
- SPRING AND FALL MIGRATION
- DRAINAGE RESTORED
- ROAD CROSSING/ACCESS
- FALL MIGRATION

SOURCE

IMAGES PROVIDED BY DDMI

PROJECT		DIAVIK DIAMOND MINES NORTHWEST TERRITORIES			
TITLE		PREFERRED FINAL PROCESSED KIMBERLITE CONTAINMENT LANDSCAPE			
PROJECT	09.1328.0021	FILE No.	0913280021C040		
DESIGN	TD	20/11/09	SCALE	AS SHOWN	REV. 0
CADD	TRE	25/11/09			
CHECK	TD	13/12/10	FIGURE: 5-13		
REVIEW	GM	13/12/10			





SCHEMATIC ONLY, NOT TO SCALE

PROJECT		DIAMOND MINES INC.	
DIAMOND MINES INC.		NORTHWEST TERRITORIES	
TITLE		PREFERRED FINAL PROCESSED KIMBERLITE CONTAINMENT DESIGN CONCEPT	
PROJECT	09.1328.0021	FILE No.	0913280021C033
DESIGN	DM	25/11/10	SCALE AS SHOWN REV. 0
CADD	JEF	02/12/10	FIGURE:5-14
CHECK	TD	13/12/10	
REVIEW	GM	13/12/10	



Activity	2010	2011	2012	2013	2014	2015	2016	2017	2018	2019	2020	2021	2022	2023	2024	2025	2026	2027	2028	2029	2030
PK Deposition																					
Revised Water Management																					
Engineering/Environmental Studies																					
Community & Regulator Engagement																					
Final Design Concepts																					
Detailed Engineering																					
Placement of Final Surface and Wildlife Access																					
Outlet Preparation																					
Decomission Collection Ponds																					
Infrastructure Decomissioning																					
Performance Monitoring																					
Engineering Inspections																					
Effects Monitoring																					
Reporting																					

PROJECT		DIAVIK DIAMOND MINES NORTHWEST TERRITORIES						
TITLE		CLOSURE ACTIVITY SCHEDULE - PROCESSED KIMBERLITE CONTAINMENT AREA						
PROJECT No.		09.1328.0021		FILE No.		0913280021C034		
DESIGN	TD	25/11/09		SCALE	N.T.S.		REV.	0
CADD	JEF	25/11/09		FIGURE 5-15				
CHECK	TD	13/12/10						
REVIEW	GM	13/12/10						



**FIGURE 5-16a
PRE-DEVELOPMENT
(2000)**



**FIGURE 5-16b
EXISTING DEVELOPMENT
(2009)**



**FIGURE 5-16c
FINAL DEVELOPMENT
(2022)**

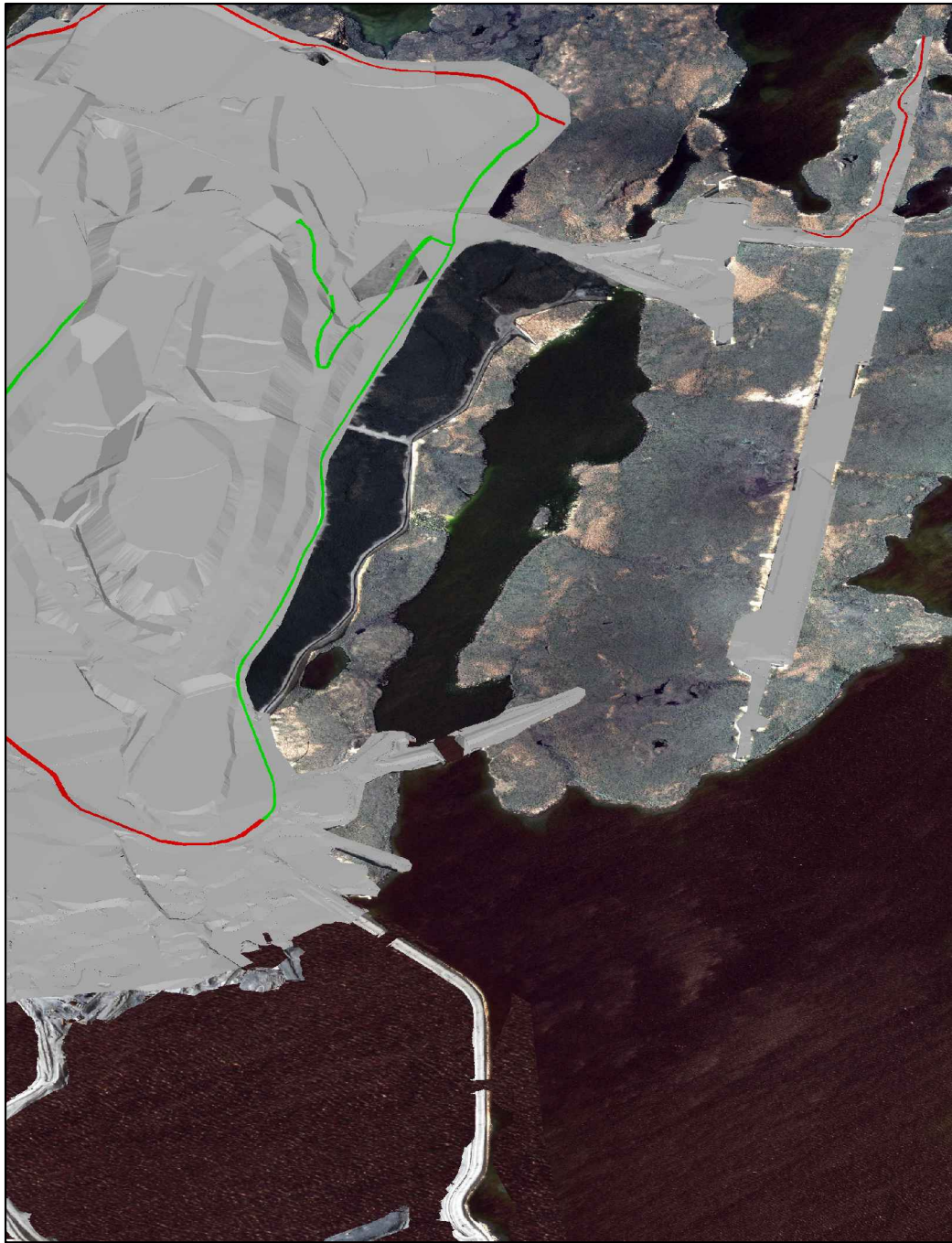


SOURCE
IMAGES PROVIDED BY DDMI

PROJECT		DIAVIK DIAMOND MINES NORTHWEST TERRITORIES	
TITLE		NORTH INLET AREA - SITE DEVELOPMENT	
PROJECT	09.1328.0021	FILE No.	0913280021C035
DESIGN	TD	11/11/09	SCALE AS SHOWN REV. 0
CADD	TRE	25/11/09	
CHECK	TD	13/12/10	
REVIEW	GM	13/12/10	



FIGURE: 5-16




NOT TO SCALE

PROJECT		DIAVIK DIAMOND MINES NORTHWEST TERRITORIES		
TITLE		PREFERRED FINAL NORTH INLET LANDSCAPE		
PROJECT		09.1328.0021	FILE No. 0913280021C036	
DESIGN	TD	20/11/09	SCALE	AS SHOWN
CADD	JEF	09/12/09	REV.	0
CHECK	TD	13/12/10	FIGURE: 5-17	
REVIEW	GM	13/12/10		

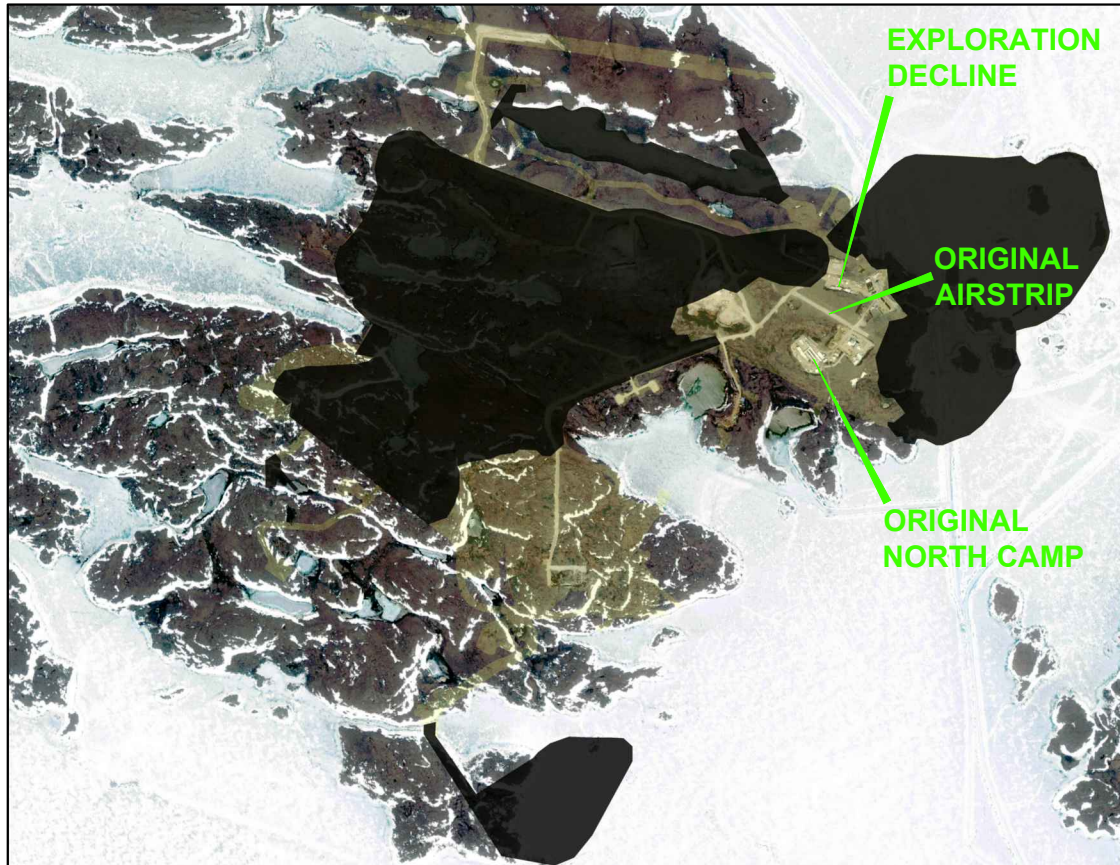
SOURCE
IMAGE PROVIDED BY DDMI



Activity	2010	2011	2012	2013	2014	2015	2016	2017	2018	2019	2020	2021	2022	2023	2024	2025	2026	2027	2028	2029	2030
Mine Water Treatment																					
Environmental Studies																					
Community & Regulator Engagement																					
Final Design Concept																					
Detailed Engineering																					
Decommission East Dam																					
Performance Monitoring																					
Engineering Inspections																					
Effects Monitoring																					
Reporting																					

PROJECT		DIAVIK DIAMOND MINES NORTHWEST TERRITORIES			
TITLE		CLOSURE ACTIVITY SCHEDULE NORTH INLET AREA			
	PROJECT No.	09.1328.0021	FILE No.	0913280021C037	
	DESIGN	TD	25/11/09	SCALE	N.T.S. REV. 0
	CADD	JEF	25/11/09		
	CHECK	TD	13/12/10		
	REVIEW	GM	13/12/10		
			FIGURE 5-18		

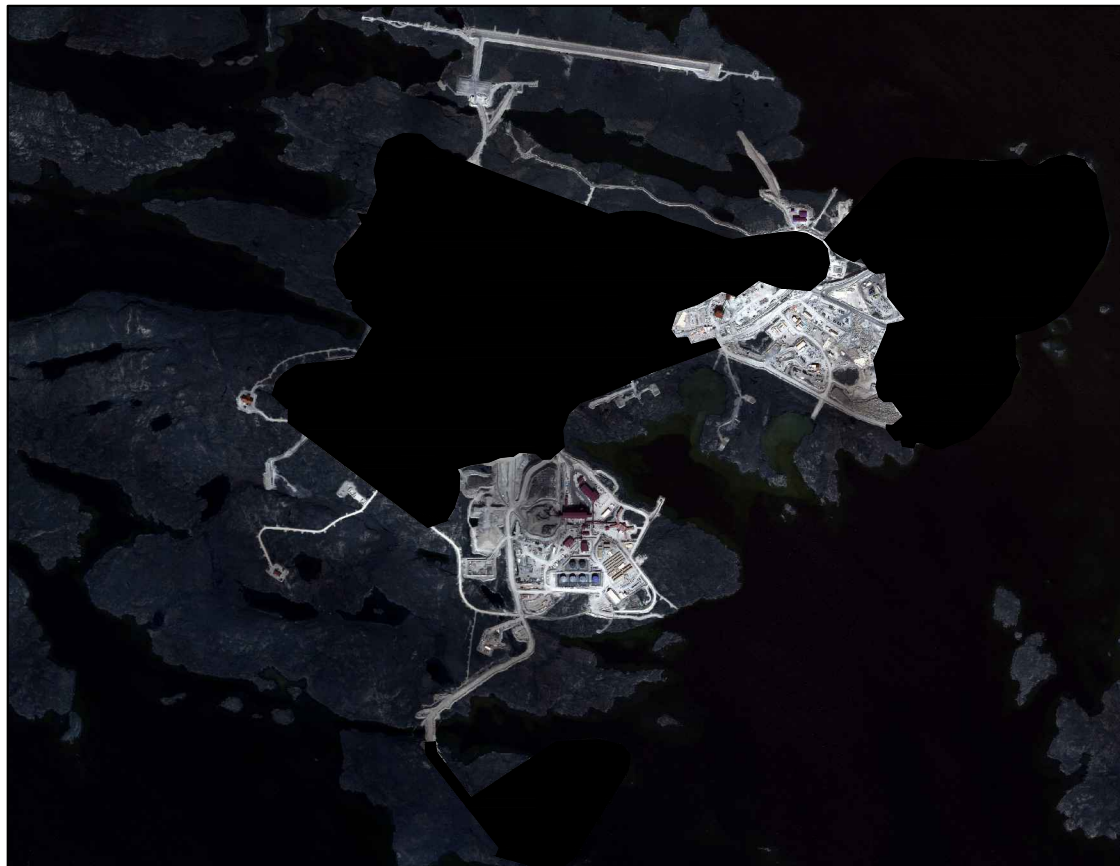
**FIGURE 5-19a
PRE-DEVELOPMENT
(2000)**



**FIGURE 5-19b
EXISTING DEVELOPMENT
(2009)**



**FIGURE 5-19c
FINAL DEVELOPMENT
(2022)**



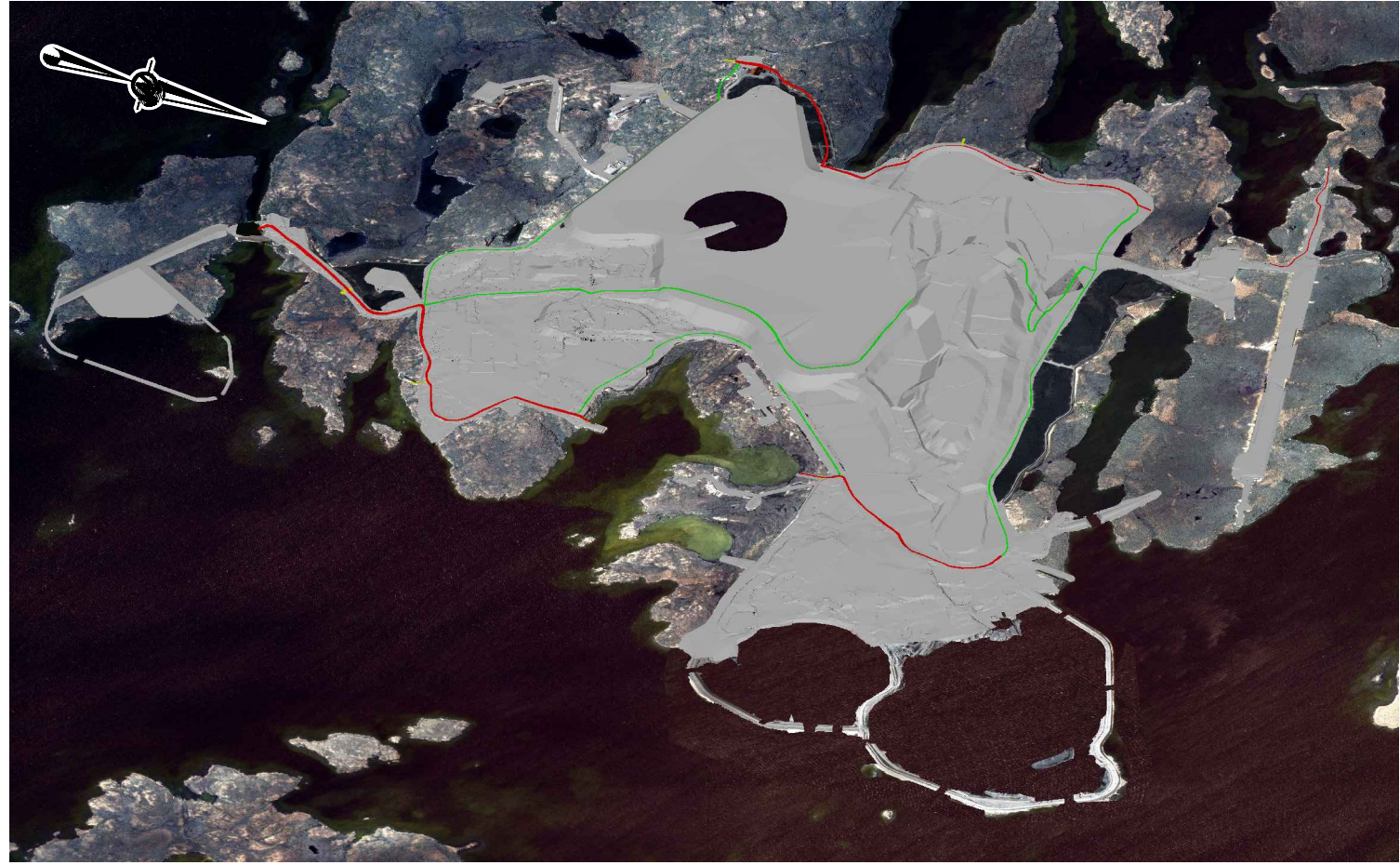
1 0 1
SCALE (APPROX.) KILOMETRES

SOURCE
IMAGES PROVIDED BY DDMI

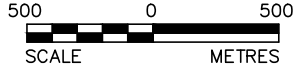
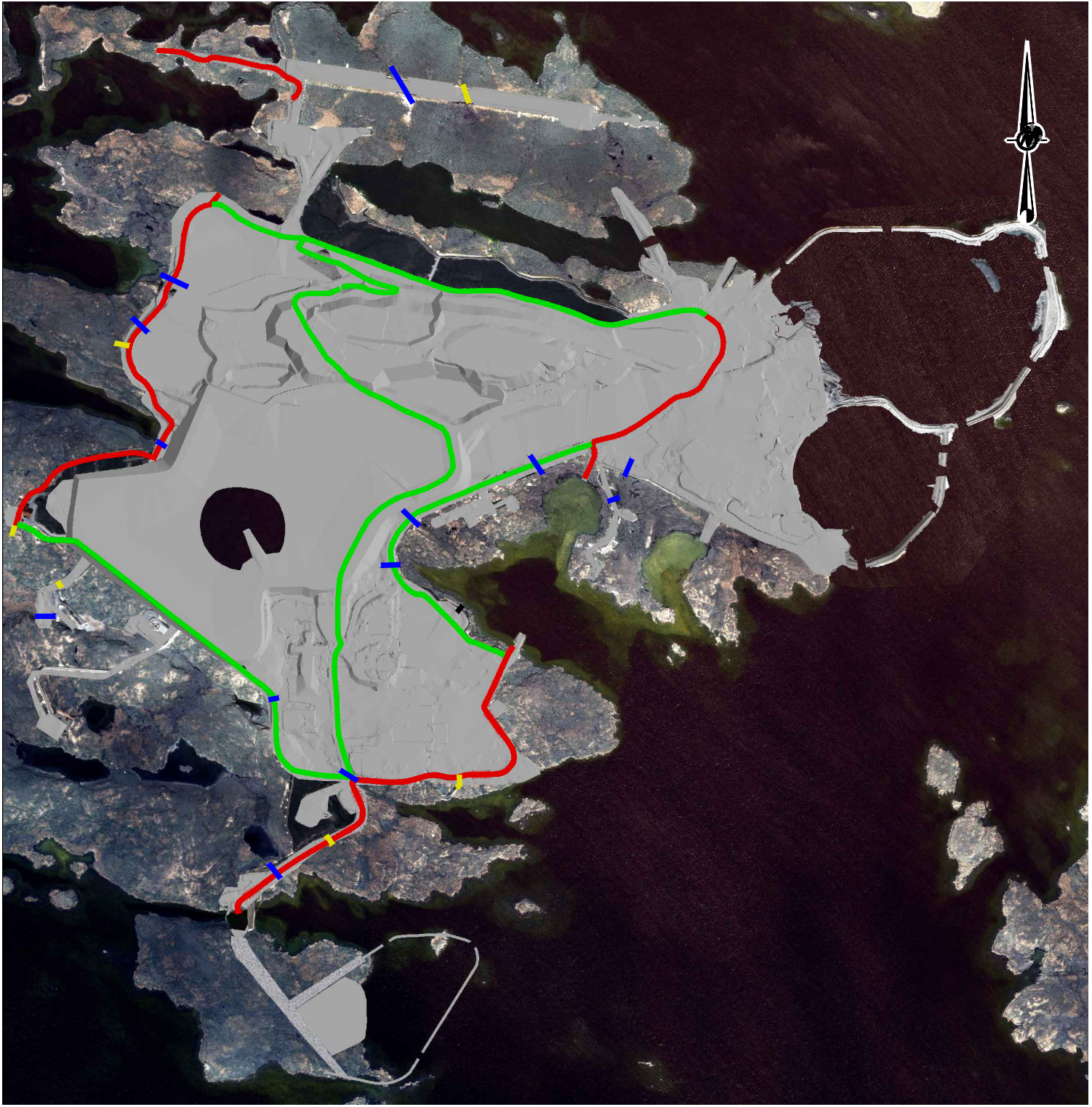
PROJECT		DIAVIK DIAMOND MINES NORTHWEST TERRITORIES	
TITLE		MINE INFRASTRUCTURE AREA - SITE DEVELOPMENT	
PROJECT	09.1328.0021	FILE No.	0913280021C038
DESIGN	TD	11/11/09	SCALE AS SHOWN REV. 0
CADD	TRE	25/11/09	
CHECK	TD	13/12/10	
REVIEW	GM	13/12/10	



FIGURE: 5-19



NOT TO SCALE



LEGEND

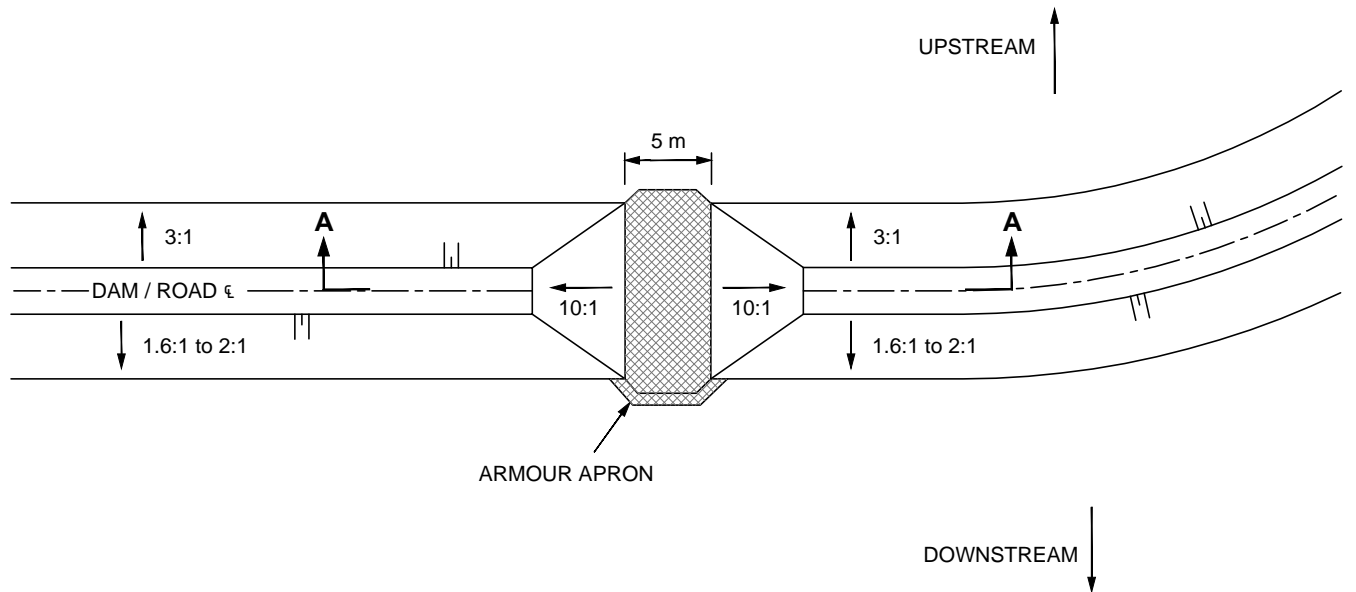
—	SPRING AND FALL MIGRATION
—	DRAINAGE RESTORED
—	ROAD CROSSING/ACCESS
—	FALL MIGRATION

SOURCE
IMAGES PROVIDED BY DDMI

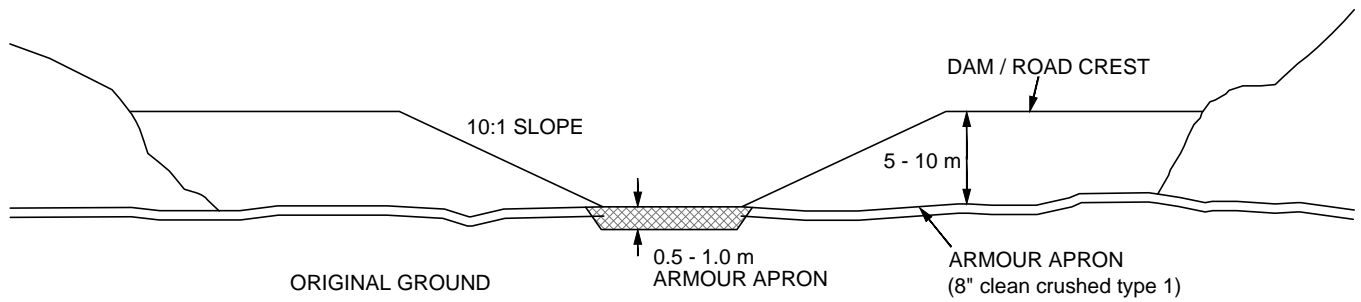
PROJECT		DIAVIK DIAMOND MINES NORTHWEST TERRITORIES	
TITLE		PREFERRED FINAL MINE INFRASTRUCTURE LANDSCAPE	
PROJECT		09.1328.0021	FILE No. 0913280021C040
DESIGN	TD	20/11/09	SCALE AS SHOWN REV. 0
CADD	TRE	25/11/09	
CHECK	TD	13/12/10	FIGURE: 5-20
REVIEW	GM	13/12/10	



L:\2009\1328_YKnife\09-1328-0021\11000\Report C 11100\Fig 5-21 0913280021C039 Stream Drainage Reclamation Typical Section.dwg Dec 15, 2010 - 9:58am



PLAN VIEW



SECTION A-A

SCHEMATIC ONLY, NOT TO SCALE


PROJECT		DIAVIK DIAMOND MINES NORTHWEST TERRITORIES			
TITLE		STREAM DRAINAGE RECLAMATION TYPICAL SECTION			
PROJECT	09.1328.0021	FILE No.	0913280021C039		
DESIGN	TD	16/10/09	SCALE	AS SHOWN	REV. 0
CADD	TRE	25/11/09	FIGURE: 5-21		
CHECK	TD	13/12/10			
REVIEW	GM	13/12/10			

SOURCE

ORIGINAL DRAWING PROVIDED BY DDMI



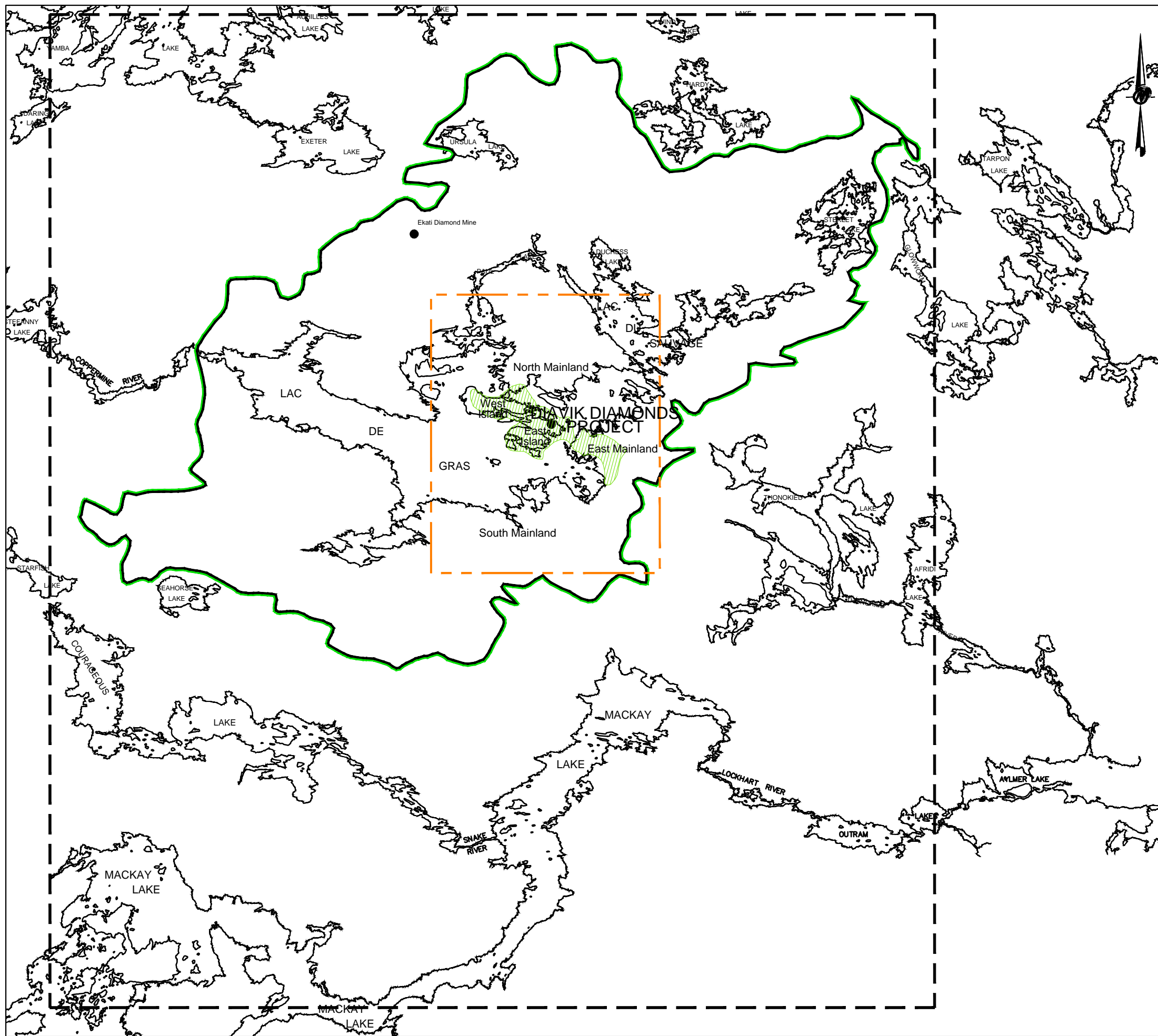
Activity	2010	2011	2012	2013	2014	2015	2016	2017	2018	2019	2020	2021	2022	2023	2024	2025	2026	2027	2028	2029	2030
Accomodation/Power/Transportation Required																					
Engineering/Environmental Studies																					
Community & Regulator Engagement																					
Final Decomissioning Plan																					
Inventory of Assets																					
Commercial Arrangements - Sale/Transfer of Assets																					
Decomission Process and Paste Plants																					
Decomission Explosives Plant and Storage																					
Decomission Accomodation and Other Buildings																					
Decomission Fuel Storage and Power																					
Decomission Waste Transfer																					
Decomission Roads, Plantsite, Laydown																					
Decomission Collection Ponds & Pipelines																					
Decomission Final Camp, Airstrip and Landfill																					
Performance Monitoring																					
Engineering Inspections																					
Effects Monitoring																					
Reporting																					

PROJECT		DIAVIK DIAMOND MINES NORTHWEST TERRITORIES			
TITLE		CLOSURE ACTIVITY SCHEDULE MINE INFRASTRUCTURE AREA			
	PROJECT No.	09.1328.0021		FILE No.	091328021C041
	DESIGN	TD	25/11/09	SCALE	N.T.S. REV. 0
	CADD	JEF	25/11/09		
	CHECK	TD	13/12/10		
	REVIEW	GM	13/12/10		
			FIGURE 5-22		






Activity	2010	2011	2012	2013	2014	2015	2016	2017	2018	2019	2020	2021	2022	2023	2024	2025	2026	2027	2028	2029	2030
Open Pit Mining A418/A154																					
Underground A418/A154																					
Wet Mining - A21																					
Dump Development																					
Re-Mining for Backfill																					
PK Deposition																					
Mine Water Treatment																					
Accommodation/Power/Transportation Required																					
Winter Road																					
Revised Water Management - PKC																					
Engineering/Environmental Studies																					
Community & Regulator Engagement																					
Final Design Concepts/Decommissioning Plan																					
Detailed Engineering																					
Wildlife Access, Contouring, Cover - Wasterock and Till																					
Inventory of Assets																					
Commercial Arrangements - Sale/Transfer of Assets																					
Complete Fish Habitat Construction																					
Decommission Collection Ponds 1,2,3																					
PKC Outlet Preparation																					
Placement of Final Surface and Wildlife Access - PKC																					
Decommission Surface Mine Infrastructure																					
Decommission Underground																					
Decommission Process and Paste Plants																					
Decommission Explosives Plant and Storage																					
Flood Mine Areas - Clarify Water																					
Decommission Accommodation and Other Buildings																					
Decommission Fuel Storage and Power																					
Decommission Collection Ponds 4,5,6,7																					
Decommission Dikes/Sediment Control Structure																					
PKC Infrastructure Decommissioning																					
Decommission Waste Transfer																					
Decommission Roads, Plantsite, Laydown																					
Decommission Collection Ponds & Pipelipeline 10,11,12,13																					
Decommission North Inlet East Dam																					
Decommission Final Camp, Airstrip and Landfill																					
Performance Monitoring																					
Engineering Inspections																					
Effects Monitoring																					
Reporting																					

PROJECT		DAVIK DIAMOND MINES NORTHWEST TERRITORIES			
TITLE		INTEGRATED SCHEDULE OF ACTIVITIES PERMANENT CLOSURE			
	PROJECT No.	09.1328.0021		FILE No.	0913280021C042
	DESIGN	TD	25/11/09	SCALE	N.T.S. REV. D
	CADD	JEF	25/11/09	FIGURE 8-1	
	CHECK	TD	13/12/10		
	REVIEW	GM	13/12/10		

L:\2009_1328_Yknife\09-1328-0021\11000\Report_C 11100\Fig 9-1 0913280021C043 Regional Cumulative Study Area.dwg Dec 15, 2010 - 10:04am

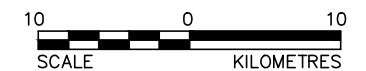


LEGEND

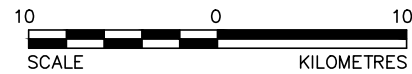
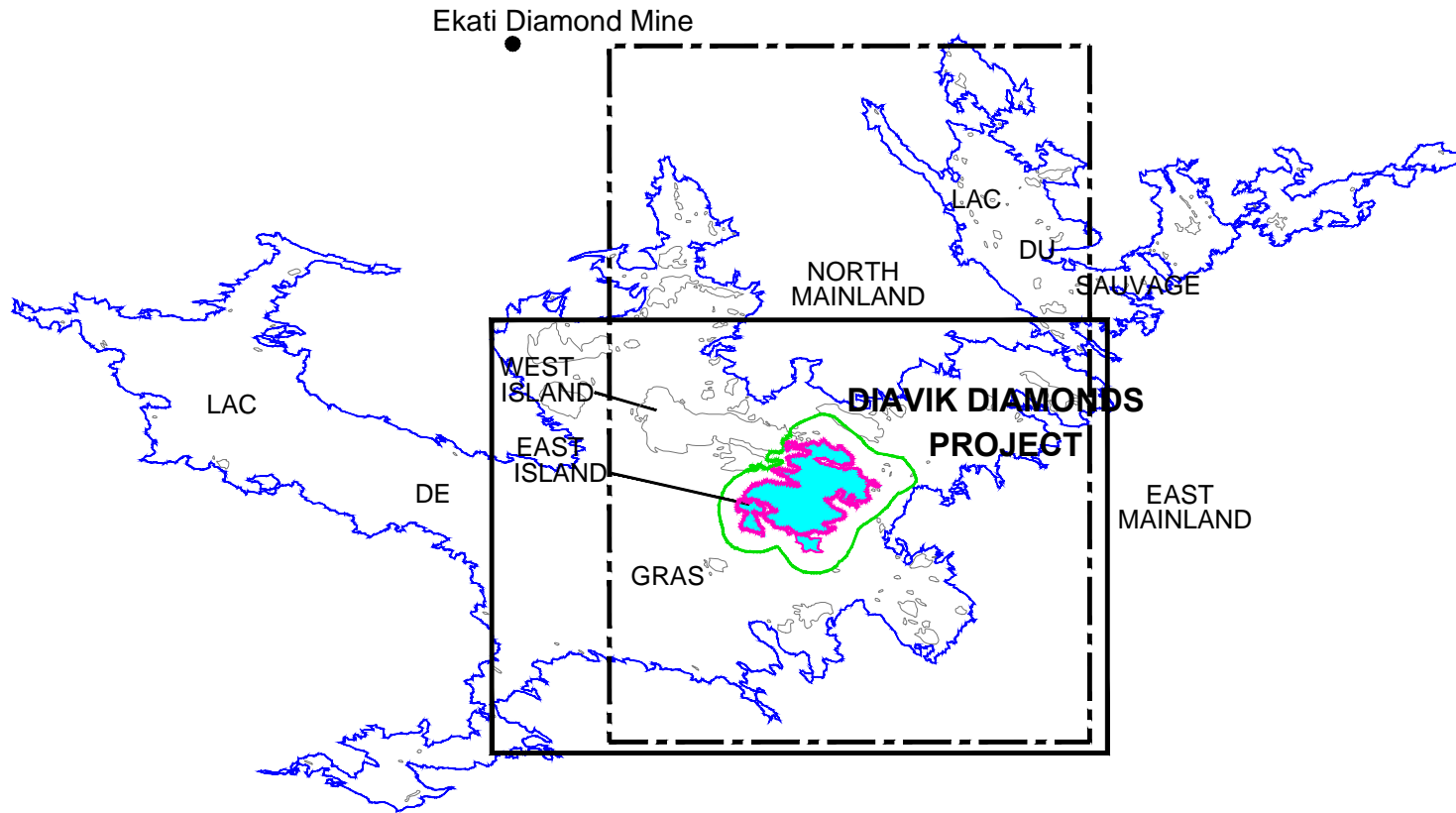
-  WILDLIFE
-  VEGETATION AND TERRAIN
-  FISH AND WATER
-  HERITAGE RESOURCES
-  AIR QUALITY

REFERENCE

NATIONAL TOPOGRAPHICAL DATABASE
SETS 76C, 76D, 75M and 75N
FROM GEOMATICS CANADA



PROJECT		DIAMOND MINES INC.		PROJECT 09.1328.0021		FILE No. 0913280021C043	
		NORTHWEST TERRITORIES		DESIGN TD 04/11/09		SCALE AS SHOWN REV. 0	
TITLE		REGIONAL / CUMMULATIVE STUDY AREAS		CADD TRE 26/11/09			
		DIAMOND MINES INC.		CHECK TD 13/12/10		FIGURE: 9-1	
				REVIEW GM 13/12/10			



LEGEND

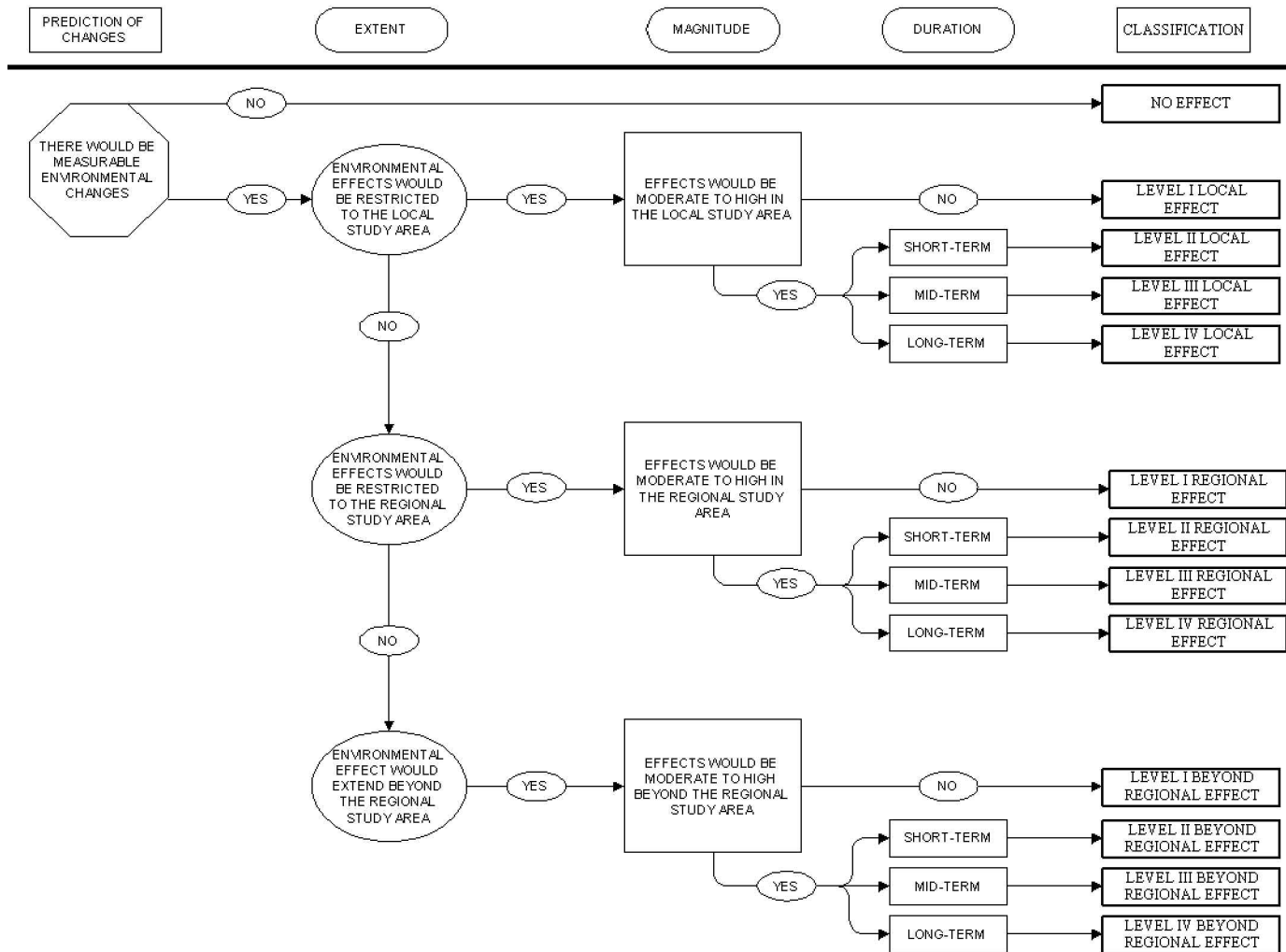
- HERITAGE RESOURCES
- AIR QUALITY
- WILDLIFE LOCAL
- FISH AND WATER
- VEGETATION AND TERRAIN

REFERENCE

NATIONAL TOPOGRAPHICAL DATA BASE SETS 76C AND 76D, FIRST EDITION
SOURCE: Fedirchuk McCullough & Associates Ltd., 1995

PROJECT		DIAVIK DIAMOND MINES NORTHWEST TERRITORIES			
TITLE		LOCAL STUDY AREA			
PROJECT		09.1328.0021		FILE No. 0913280021C044	
DESIGN	TD	11/11/09		SCALE	AS SHOWN
CADD	JEF	13/11/09		REV.	0
CHECK	TD	13/12/10		FIGURE: 9-2	
REVIEW	GM	13/12/10			



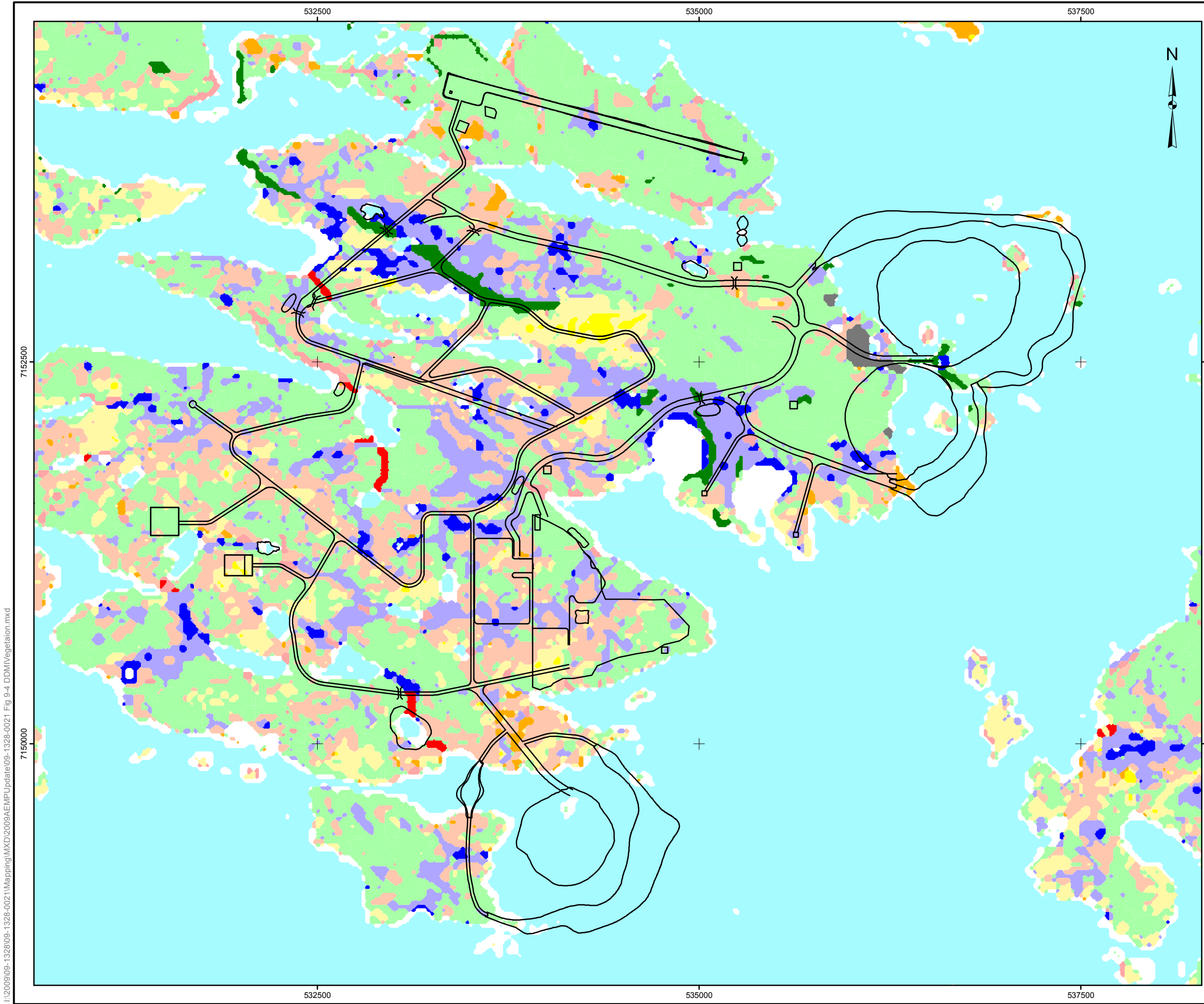


SCHEMATIC ONLY, NOT TO SCALE

NOTES:

1. AN EFFECT MAY BE CLASSIFIED FOR MORE THAN ONE STUDY AREA (E.G., A REGIONAL EFFECT MAY ALSO BE CLASSIFIED AS A LOCAL EFFECT).
2. EFFECT CLASSIFICATIONS ARE RANKED FROM I TO IV WITH LEVEL I BEING THE LOWEST EFFECT LEVEL AND LEVEL IV BEING THE HIGHEST EFFECT LEVEL.
3. ONLY ADVERSE EFFECTS ARE CLASSIFIED.

PROJECT		DIAVIK DIAMOND MINES NORTHWEST TERRITORIES			
TITLE		EFFECTS CLASSIFICATION FLOW CHART			
	PROJECT No.	09.1328.0021		FILE No.	0913280021C045
	DESIGN	TD	04/11/09	SCALE	N.T.S. REV. 0
	CADD	YW	24/11/09	FIGURE 9-3	
	CHECK	TD	13/12/10		
REVIEW	GM	13/12/10			



- LEGEND**
- DIAVIK FOOTPRINT
 - LAND COVER CLASSIFICATION**
 - HEATH TUNDRA
 - HEATH TUNDRA 30-80% BEDROCK
 - HEATH TUNDRA 30-80% BOULDERS
 - TUSSOCK/HUMMOCK
 - SEDGE WETLAND
 - RIPARIAN TALL SHRUB
 - BIRCH SEEP AND RIPARIAN SHORELINE SHRUB
 - BOULDER COMPLEX (<80% ROCK)
 - BEDROCK COMPLEX (<80% ROCK)
 - SHALLOW WATER
 - DEEP WATER
 - HUMAN DISTURBANCE
 - ESKER

I:\2009\09-1328\09-1328-0021\Mapping\MXD\2009AEMPUpdate\09-1328-0021_Fig 9-4_DDMIVegetation.mxd

REFERENCE
 Projection: UTM Zone 12 Datum: NAD 83



PROJECT		DIAVIK DIAMOND MINES NORTHWEST TERRITORIES	
TITLE		VEGETATION LAND COVER WITHIN THE LOCAL STUDY AREA AND MAXIMUM MINE OPERATION (YEAR 2018)	
PROJECT No. 09-1328-0021		SCALE AS SHOWN	REV. 0
DESIGN	TD	20 Nov. 2009	FIGURE: 9-4
GIS	CW	20 Nov. 2009	
CHECK	TD	24 Nov. 2009	
REVIEW	GM	24 Nov. 2009	

