

**APPENDIX VIII**

**BLANK**

**APPENDIX IX**  
**COMMUNITY ENGAGEMENT**

**Appendix IX-1** Engagement Log

**Appendix IX-2** Engagement Presentation

## **Appendix IX-1 Engagement Log**

**2016**

## **DIAVIK COMMUNITY ENGAGEMENT RECORD**

---

North Country Rock Pile – Waste Rock Storage Area

Recorded By: [DDMI, Communities & External Relations](#)

2016 Closure Engagement Record

DATE & TIME	ENGAGEMENT TRIGGER	ATTENDEES	LOCATION/ ENAGEMENT ACTIVITY TYPE	ISSUES RAISED	DDMI RESPONSE	MATERIALS PROVIDED TO ENGAGED PARTY	MINUTES (Y/N)
29 Aug 2016	Closure Planning & Engagement Plan Update	<ul style="list-style-type: none"> <li>• Tlicho Chiefs Executive Council (3)</li> <li>• Kwe Beh Working Group (2)</li> <li>• Tlicho Investment Corporation (1)</li> <li>• Tlicho Government Staff (1)</li> </ul>	<ul style="list-style-type: none"> <li>• Diavik / Mine Site Visit / Tour</li> <li>• Diavik / Face-to-Face Meeting</li> </ul>	<ul style="list-style-type: none"> <li>• North Country Rock Pile (NCRP) aggregate size relative to Caribou passage safety</li> <li>• NCRP Closure Design Plan support will require further consideration, and presentation to rest of Kwe Beh Working group</li> <li>• Placing processed kimberlite underground may set precedence for "other" mines</li> </ul>	<ul style="list-style-type: none"> <li>• Reiterate issue has been raised by TK Panel. Current design plan incorporates cover of larger boulders with smaller material to eliminate hazards and/or use of larger boulders strategically to try to dissuade or direct movement.</li> <li>• DDMI will provide additional closure update to Kwe Beh at earliest convenience</li> <li>• Reiterate DDMI is interested in progressing feasibility studies, however will not proceed if communities are strongly opposed to the idea</li> </ul>	<ul style="list-style-type: none"> <li>• Closure Update Presentation – 29 Aug 2016 Deck (.pdf)</li> </ul>	Y
9 Sep 2016	Closure Planning	<ul style="list-style-type: none"> <li>• EMAB Board (6)</li> <li>• EMAB staff (2)</li> <li>• WLWB staff (1)</li> </ul>	<ul style="list-style-type: none"> <li>• Face-to-Face Meeting</li> </ul>	<ul style="list-style-type: none"> <li>• Whether EMAB should formally participate in the WLWB process and comment on Diavik's closure plan</li> </ul>	<ul style="list-style-type: none"> <li>• DDMI believes it's fully in EMAB's mandate to formally participate in the process and comment</li> </ul>	<ul style="list-style-type: none"> <li>• None</li> </ul>	N
15 Sep 2016	Closure Planning & Engagement Update	<ul style="list-style-type: none"> <li>• LKDFN Chief &amp; Council (3)</li> <li>• LKDFN Lands &amp; Wildlife (1)</li> <li>• LKDFN TK Panel members (2)</li> <li>• LKDFN Staff (2)</li> </ul>	<ul style="list-style-type: none"> <li>• Community Visit</li> <li>• Face-to-Face Meeting</li> </ul>	<ul style="list-style-type: none"> <li>• Fish habitat, water quality and dust monitoring programs</li> <li>• Closure plan for North Inlet and impacts to aquatic life and chemicals in North Inlet</li> <li>• Closure planning of open pits to fill with water from lake and impacts to water levels</li> <li>• Closure plan of infrastructure and cement pad foundations should be removed or crushed</li> </ul>	<ul style="list-style-type: none"> <li>• Explained DDMI monitoring programs, data collection and controls used. DDMI can provide tour w/environment during site visit</li> <li>• Explained results of studies done and options in closure plan</li> <li>• Controlled process to return water to pit while monitoring; changes expected is 1mm to level</li> <li>• Infrastructure will be reused (removed), recycled (removed) or inert items to buried</li> </ul>	<ul style="list-style-type: none"> <li>• Closure Update presentation – 15 Sept. 2016</li> </ul>	Y

2016 Closure Engagement Record

DATE & TIME	ENGAGEMENT TRIGGER	ATTENDEES	LOCATION/ ENAGEMENT ACTIVITY TYPE	ISSUES RAISED	DDMI RESPONSE	MATERIALS PROVIDED TO ENGAGED PARTY	MINUTES (Y/N)
16 Sep 2016	Closure Planning & Engagement Plan Update	<ul style="list-style-type: none"> <li>• YKDFN Staff (1)</li> </ul>	<ul style="list-style-type: none"> <li>• Diavik Corporate Office</li> </ul>	<ul style="list-style-type: none"> <li>• TK Panel serving as community consultation.</li> <li>• Placing processed kimberlite underground may be a good option.</li> </ul>	<ul style="list-style-type: none"> <li>• DDMI recognizes that Panel members' opinions do not necessarily represent those of the community. DDMI considers the TK Panel process as a critical first step in reviewing closure plans, as identified by the process flowchart previously provided to the WLWB.</li> <li>• DDMI would appreciate the support.</li> </ul>	<ul style="list-style-type: none"> <li>• None</li> </ul>	Y
16 Sep 2016	Closure Planning & Engagement Plan Update	<ul style="list-style-type: none"> <li>• NSMA President (1)</li> <li>• NSMA Board of Directors (5)</li> <li>• NSMA Staff (1)</li> </ul>	<ul style="list-style-type: none"> <li>• NSMA Office</li> </ul>	<ul style="list-style-type: none"> <li>• Infrastructure closure plan suggest buildings be donated to City of YK for homeless</li> <li>• PKC closure methods to UG tunnel option may be a better option if not toxic.</li> <li>• EMAB consultation process &amp; workshop to include aboriginal groups and technical experts</li> </ul>	<ul style="list-style-type: none"> <li>• DDMI will compile asset list to be shared during closure planning.</li> <li>• DDMI requesting support to research feasibility study for UG workings.</li> <li>• EMAB is a separate board to determine the review process.</li> </ul>	<ul style="list-style-type: none"> <li>• None</li> </ul>	Y
21 Sep 2016	Closure Planning & Engagement Plan Update	<ul style="list-style-type: none"> <li>• KIA President (1)</li> <li>• KIA Staff (2)</li> <li>• KC Staff (1)</li> </ul>	<ul style="list-style-type: none"> <li>• KIA Office (Cambridge Bay, NU)</li> </ul>	<ul style="list-style-type: none"> <li>• NLWB involvement in WLWB Process</li> <li>• Suggestion to provide presentations to KIA Land &amp; Environment staff, and KIA Board</li> <li>• KC expressed interest in infrastructure retirement process &amp; opportunities</li> <li>• KC expressed interest in additional business opportunities associated with Closure</li> <li>• Access to TK Panel reports</li> </ul>	<ul style="list-style-type: none"> <li>• Diavik water license reside with WLWB, NLWB may submit interventions as/when as per regulator process</li> <li>• DDMI commitment to present to KIA Land &amp; Environment, and KIA Board</li> <li>• DDMI committed to engaging with KC and KIA for infrastructure &amp; asset disposal opportunities</li> <li>• DDMI committed to continued engagement on Business opportunities</li> <li>• DDMI confirmed TK Panel reports availability on WLWB registry</li> </ul>	<ul style="list-style-type: none"> <li>• Closure Update Presentation – 21 Aug 2016 Deck (.pdf)</li> </ul>	Y

2016 Closure Engagement Record

DATE & TIME	ENGAGEMENT TRIGGER	ATTENDEES	LOCATION/ ENAGEMENT ACTIVITY TYPE	ISSUES RAISED	DDMI RESPONSE	MATERIALS PROVIDED TO ENGAGED PARTY	MINUTES (Y/N)
13 Oct 2016	Closure Planning  &  Engagement Plan Update	<ul style="list-style-type: none"> <li>• KIA Land and Environment Staff (4)</li> <li>• Kugluktuk Hamlet Council and Staff (2)</li> <li>• Kugluktuk Angoniatic Association Board and Staff (3)</li> <li>• DDMI TK Panel Elders (2)</li> <li>• Department of Fisheries &amp; Oceans Canada (1)</li> </ul>	<ul style="list-style-type: none"> <li>• Heritage Center (Kugluktuk, NU)</li> <li>• Face to Face Meeting &amp; Presentation</li> </ul>	<ul style="list-style-type: none"> <li>• Suggestion to explore alternatives to landfilling infrastructure</li> </ul>	<ul style="list-style-type: none"> <li>• DDMI confirmed landfilling has always been a part of our waste management processes, and stressed that moving forward, opportunity is to identify ways to minimize landfilling through closure (ie Asset recycling, sale etc)</li> </ul>	<ul style="list-style-type: none"> <li>• Closure Update Presentation – 13 Oct 2016 Deck (.pdf)</li> </ul>	Y
14 Oct 2016	Closure Planning & Engagement Plan Update	<ul style="list-style-type: none"> <li>• Kugluktuk Hamlet Mayor (1)</li> </ul>	<ul style="list-style-type: none"> <li>• Hamlet Council Chambers (Kugluktuk, NU)</li> <li>• Face to Face Meeting &amp; Presentation</li> </ul>	<ul style="list-style-type: none"> <li>• None</li> </ul>	<ul style="list-style-type: none"> <li>• N/A</li> </ul>	<ul style="list-style-type: none"> <li>• Closure Update Presentation – 13 Oct 2016 Deck (.pdf)</li> </ul>	Y
19 Oct 2016	Closure planning & Engagement Plan Update	<ul style="list-style-type: none"> <li>• LKDFN Chief and Council (4)</li> <li>• LKDFN staff (3)</li> </ul>	<ul style="list-style-type: none"> <li>• Diavik Mine Site</li> <li>• Face to Face Meeting &amp; Presentation</li> <li>• Tour</li> </ul>	<ul style="list-style-type: none"> <li>• Received positive feedback for toured closure areas; PKC, test piles, dikes, north water inlet treatment plant</li> </ul>	<ul style="list-style-type: none"> <li>• N/A</li> </ul>	<ul style="list-style-type: none"> <li>• N/A</li> </ul>	N/A
4 November 2016	Diavik Diamond Mine NCRP-WRSA Closure Plan	<ul style="list-style-type: none"> <li>• KIA</li> <li>• LKDFN</li> <li>• NSMA</li> <li>• TG</li> <li>• LKDFN</li> </ul>	<ul style="list-style-type: none"> <li>• Formal Written Correspondence</li> </ul>	<ul style="list-style-type: none"> <li>• Distribution of letter requesting support for construction of the NCRP-WRSA closure cover</li> <li>• Response letter received from YKDFN on 10 November 2016 – comments relating to traditional use and knowledge, re-vegetation and physical/chemical stability</li> </ul>	<ul style="list-style-type: none"> <li>• Request for feedback</li> <li>• Updates to NCRP Closure Plan</li> </ul>	<ul style="list-style-type: none"> <li>• Letter to Chiefs: Support for Construction of Closure Cover on North Country Rock Pile</li> </ul>	N/A

2016 Closure Engagement Record

DATE & TIME	ENGAGEMENT TRIGGER	ATTENDEES	LOCATION/ ENAGEMENT ACTIVITY TYPE	ISSUES RAISED	DDMI RESPONSE	MATERIALS PROVIDED TO ENGAGED PARTY	MINUTES (Y/N)
3 Nov 2016	Closure Planning & Engagement Plan Update	<ul style="list-style-type: none"> <li>• YKDFN Chiefs (2)</li> <li>• YKDFN Staff (3)</li> </ul>	<ul style="list-style-type: none"> <li>• Chief Drygeese Building, Dettah</li> </ul>	<ul style="list-style-type: none"> <li>• Re-vegetation may not meet guiding principles and/or closure goals.</li> </ul>	<ul style="list-style-type: none"> <li>• Re-vegetation of NCRP was not in original closure plan.</li> <li>• Re-vegetation priority areas are based on recommendations given by the TK Panel members.</li> </ul>	<ul style="list-style-type: none"> <li>• Closure update presentation – 3 Nov 2016 Deck</li> </ul>	Y
16 Nov 2016	Closure planning	<ul style="list-style-type: none"> <li>• Geoscience Forum Delegates</li> </ul>	<ul style="list-style-type: none"> <li>• Yellowknife Capitol Theatre, Auditorium 1</li> </ul>	<ul style="list-style-type: none"> <li>• N/A</li> </ul>	<ul style="list-style-type: none"> <li>• N/A</li> </ul>	<ul style="list-style-type: none"> <li>• N/A</li> </ul>	N
17 Nov 2016	Closure planning	<ul style="list-style-type: none"> <li>• YKDFN Elders Senate (8)</li> </ul>	<ul style="list-style-type: none"> <li>• Det'on Cho Building, N'dilo</li> </ul>	<ul style="list-style-type: none"> <li>• Infrastructure of hunting cabin/dock to be left in area for traditional users</li> <li>• Engagement with other First Nation Leaders (Dene Nation) and future updates to Elders</li> <li>• Mine closure to include impacts to employees</li> </ul>	<ul style="list-style-type: none"> <li>• Infrastructure &amp; asset disposal to be reviewed as part of closure activities</li> <li>• DDMI welcomes other leaders to be included in closure update meetings as invited by YKDFN</li> <li>• DDMI has HR closure plans for 2021</li> </ul>	<ul style="list-style-type: none"> <li>• Closure update presentation – 17 Nov 2016 deck</li> </ul>	Y
18 Nov 2016	Closure planning	<ul style="list-style-type: none"> <li>• Kwe Beh Working Group</li> </ul>	<ul style="list-style-type: none"> <li>• TG offices, Yellowknife</li> </ul>	<ul style="list-style-type: none"> <li>• None</li> </ul>	<ul style="list-style-type: none"> <li>• N/A</li> </ul>	<ul style="list-style-type: none"> <li>• Closure update presentation – 18 Nov 2016 deck</li> </ul>	Y
29 Nov 2016	Closure planning	<ul style="list-style-type: none"> <li>• Lutselk'e community members</li> <li>• LKDFN Chief &amp; Council (5)</li> <li>• LKDFN Staff (2)</li> <li>• Denesoline Corporation (2)</li> </ul>	<ul style="list-style-type: none"> <li>• Lustelk'e Community Hall</li> </ul>	<ul style="list-style-type: none"> <li>• Suggestion to explore alternatives to landfilling infrastructure</li> <li>• Re-vegetate with vegetation natural to the area</li> <li>• LKDFN not represented on the WLWB</li> </ul>	<ul style="list-style-type: none"> <li>• DDMI confirmed landfilling has always been a part of our waste management processes, and stressed that moving forward, opportunity is to identify ways to minimize landfilling through closure (ie Asset recycling, sale etc)</li> <li>• DDMI confirmed vegetation will be natural to the area</li> <li>• Diavik water license reside with WLWB, LKDFN may submit interventions as/when as per regulator process</li> </ul>	<ul style="list-style-type: none"> <li>• Closure update presentation – 29 Nov 2016 deck</li> </ul>	Y



**Appendix IX-2 Engagement Presentation**

# Closure Planning at Diavik

2016

Document Control #: ENVI-589-0816 R0  
Template #: DCON-029-1010 R7



# Presentation Outline

## **Content**

---

Closure Planning Process

---

Community & DDMI Closure Planning Goals

---

Role of the WLWB & TK Panel

---

DDMI Community Engagement Plan & Closure Engagement

---

Diavik Closure Visualization Tool

---

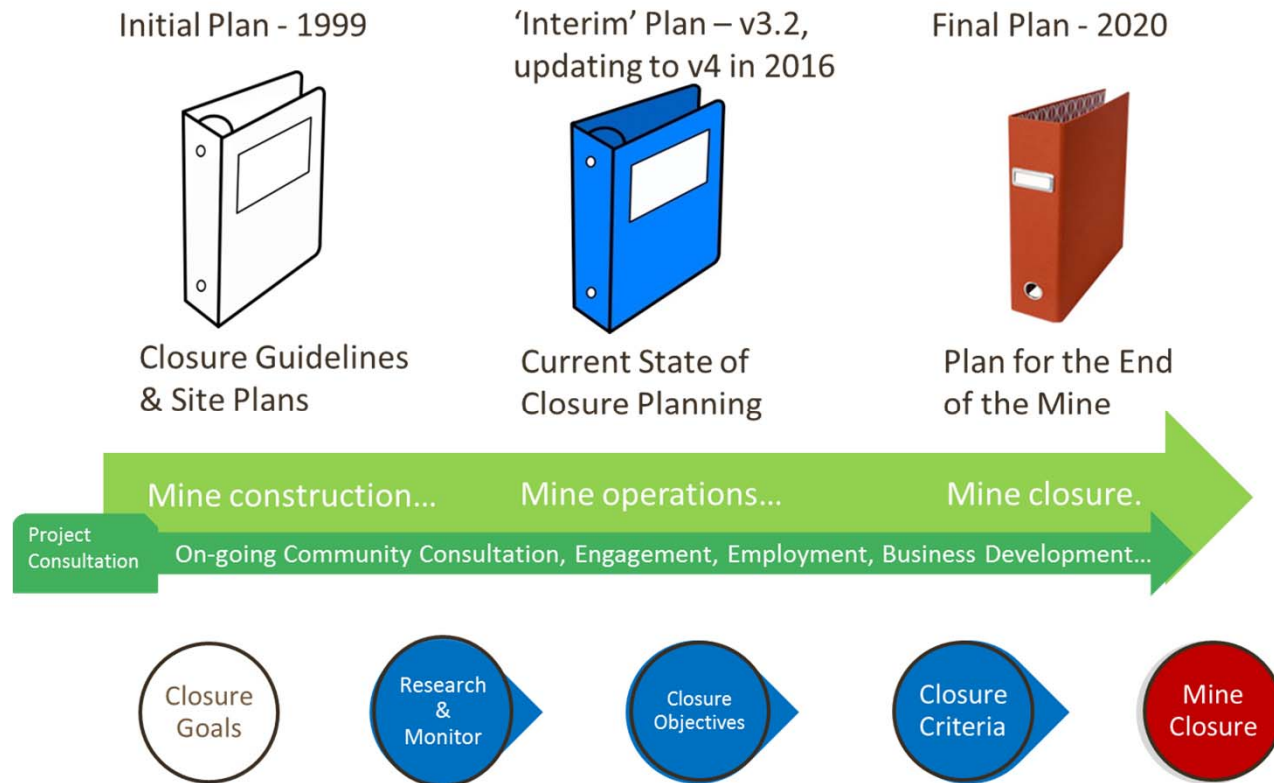
Diavik Closure Plan (North Inlet, Open Pits & Underground, Infrastructure)

---

Diavik Closure Plan – North Country Rock Pile

---

# How does closure planning work?



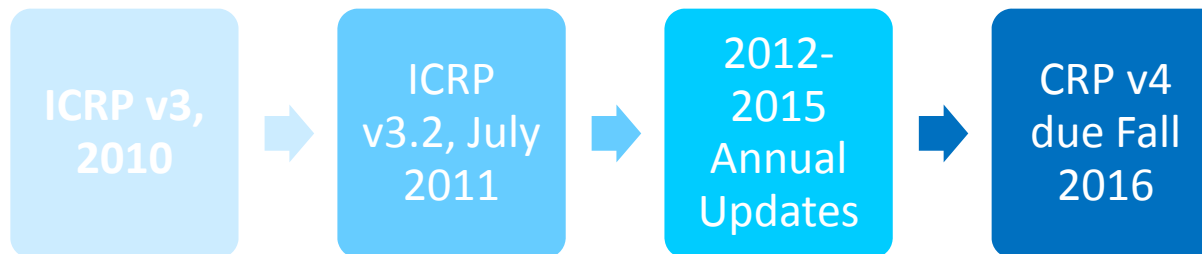
This is not a controlled document when printed

## Site-wide Closure Goals – DDMI & Communities

- Land and water that is physically and chemically stable and safe for people, wildlife and aquatic life
- Land and water that allows for traditional use
- Final landscape guided by Traditional Knowledge
- Final landscape guided by pre-development conditions
- Final landscape that is neutral to wildlife – being neither a significant attractant nor deterrent relative to pre-development conditions
- Maximize northern business opportunities during operations and closure
- Develop northern capacities during operations and closure for the benefit of the north, post-closure
- Final site conditions that do not require a continuous presence of mine staff



## Role of WLWB Review Process & the TK Panel



### TK Panel - Closure Plan Reviews, Recommendations & Responses

North Country Rock Pile (4 sessions)

Caribou Monitoring (2 sessions)

PKC

Re-vegetation

Fish Habitat & Water Quality

\*156 Recommendations to date!

\*TK Panel members for your community

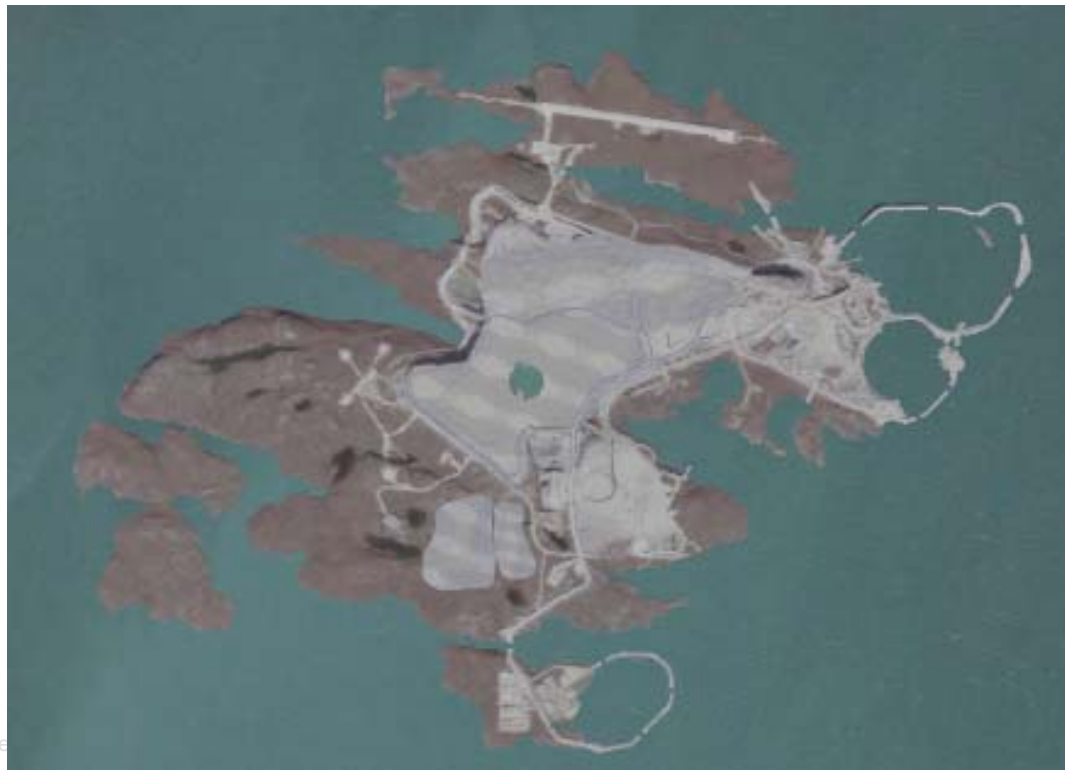
# DDMI Engagement Plan

Current WLWB Approved - 2014	Moving Forward
<p style="text-align: center;"><b>Engagement Trigger</b></p> <p style="text-align: center;">Engagement primarily related to Water Board Processes, Licences or Permits (as required), i.e.;</p> <ul style="list-style-type: none"> <li>• Interim Closure and Reclamation Plan</li> <li>• Waste Rock and Ore Storage Management Plan</li> <li>• Waste Water and Processed Kimberlite Management Plan</li> </ul>	
<p><b>Primary Methods:</b></p> <p>Water Board review process, including:</p> <ul style="list-style-type: none"> <li>• Technical meetings</li> <li>• Written comments/responses</li> </ul> <p>Technical meetings</p>	<p><b>Primary Methods:</b></p> <p>Water Board review process, including:</p> <ul style="list-style-type: none"> <li>• Technical meetings</li> <li>• Written comments/responses</li> </ul> <p>Technical meetings</p> <p>Annual Updates (as necessary) to ?</p> <p>Annual Site Visits (as necessary) for ?</p> <p><b>Additional Methods?</b></p>
<p><b>Participants:</b></p> <p>Technical Staff</p>	<p><b>Participants:</b></p> <p>?</p>



What will the site look like at closure?

## Diavik Closure Visualization Tool



This is not a controlled document when printed

# Closure Plan by Area



This is not a controlled document when printed

# Closure Plan by Area – North Inlet



This is not a controlled document when printed

# Closure Plan by Area – Open Pits & Underground



This is not a controlled document when printed

# Closure Plan by Area - Infrastructure



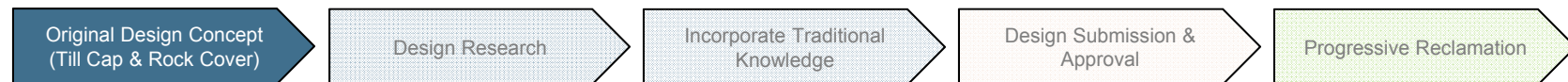
This is not a controlled document when printed

# Closure Plan by Area – North Country Rock Pile



This is not a controlled document when printed

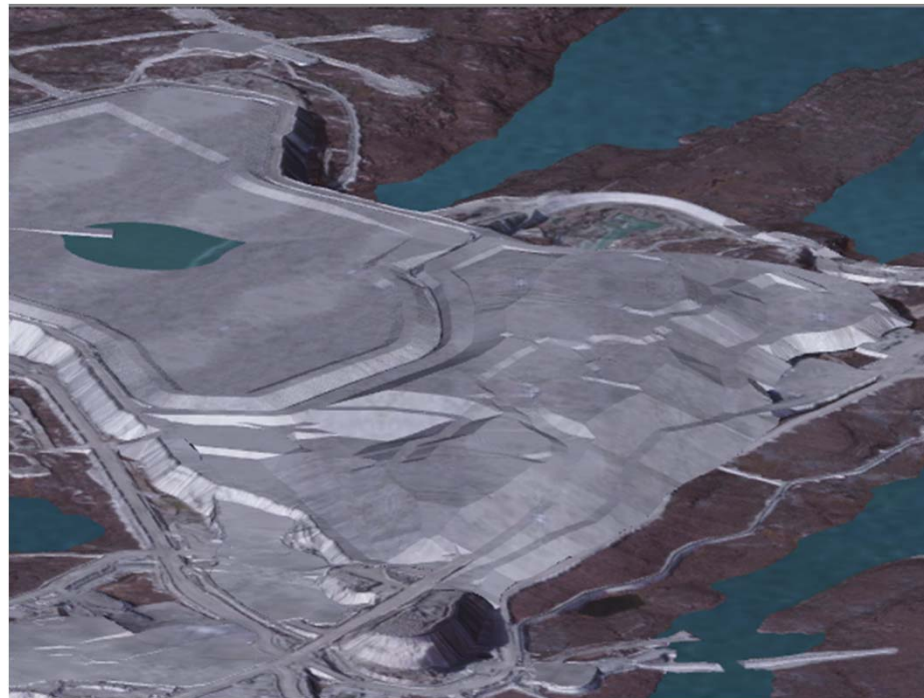
# NCRP – Closure Planning Process



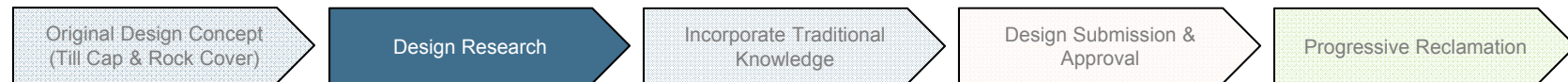
Original Design from the 1998 Environmental Assessment

## Community & DDMI Goals

- Land and water that is physically and chemically stable and safe for people, wildlife and aquatic life
- Final site conditions that do not require a continuous presence of mine staff
- Neutral to wildlife, being neither a significant attractant nor a deterrent
- Landscape guided by TK
- Develop northern capacities and maximize northern business opportunities during operations and closure



# NCRP – Closure Planning Process



## Research & Monitoring

### Chemical stability is the key performance goal:

- keep the pile frozen and limit the generation of poor quality seepage water that would go into Lac de Gras

### 10 years of Design Research

#### Seepage & WQ Monitoring

- Laboratory & Field Testing

#### Test Piles Project

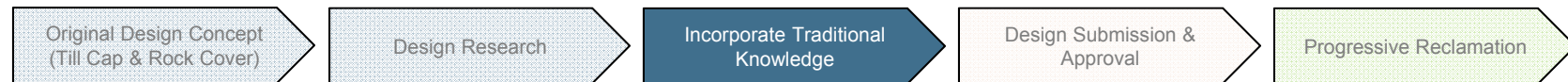
- University of Waterloo

#### NCRP Instrumentation





# NCRP – Closure Planning Process

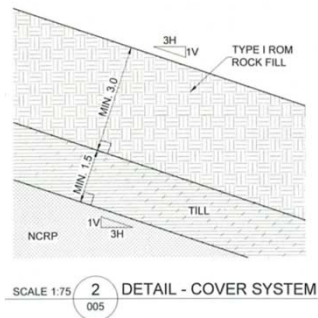
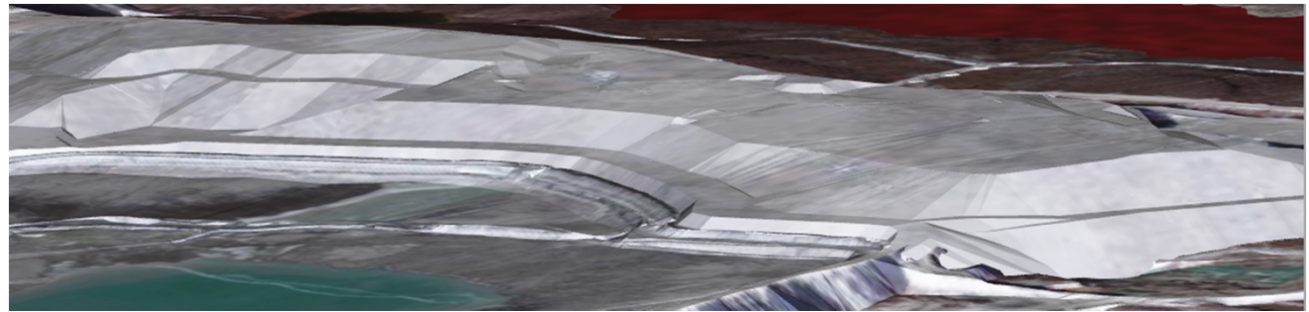


## TK Panel Priorities

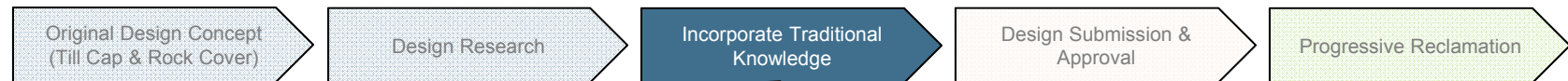
- Chemical stability & control of runoff water
- Safe use for wildlife
- Minimize visual impact on landscape

## 4 TK Panel Sessions

- Support the NCRP cover design and 3:1 slopes, with steeper slopes where it meets with the PKC
- Satisfied with the use of A21 till & rock for cover
- Concerns re: climate change & seepage; recognize cover as best approach



# NCRP – Closure Planning Process



## TK Panel Priorities

- Chemical stability & control of runoff water
- Safe use for wildlife
- Minimize visual impact on landscape

## 4 TK Panel Sessions

- Include wildlife ramps for safe travel across the pile; follow old caribou migration routes, use material like the test pile surface for safe walking, cover or remove large boulders at the base of the pile

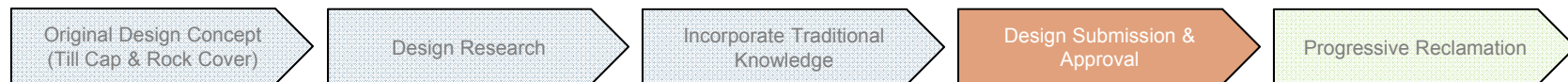


Break – lets go take a quick look at the pile!



This is not a controlled document when printed

# NCRP – Closure Planning Process

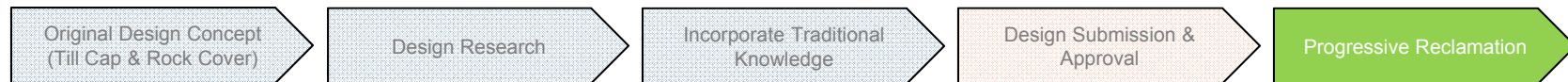


NCRP Cover Design & Closure Plan was submitted to the Wek'èezhii Land and Water Board in January 2016

Opportunity to:

- Start construction of the cover now, rather than waiting until end of operations
- Take advantage of direct haul of materials from A21
- Leverage equipment and operators from A21 construction
- Monitor and maintain cover through remainder of operations

# NCRP – Closure Planning Process



**Geotechnical inspections (stability)**

- geotechnical inspections including observations and measurement of settlement,
- erosion, surface drainage and thermal condition

**Runoff/Seepage Water Quality (chemistry)**

- seepage quality and using a system similar to the Surveillance Network Program (SNP)

**Dust and Dust Deposition**

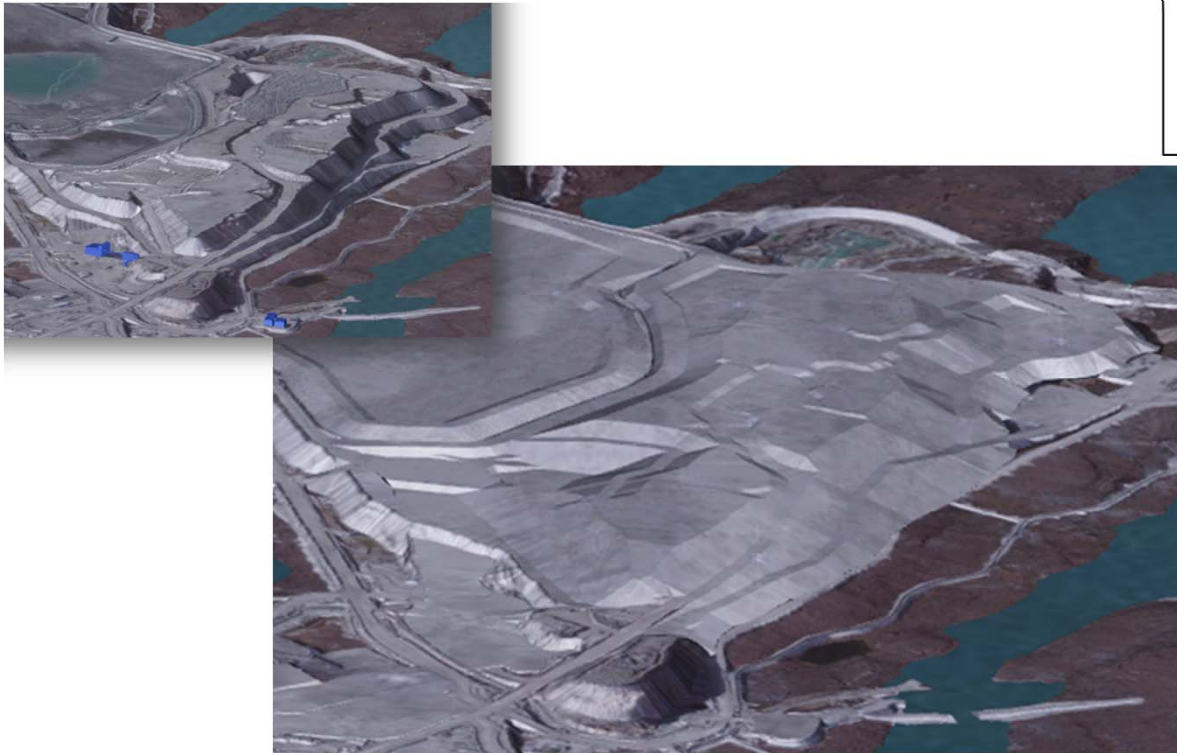
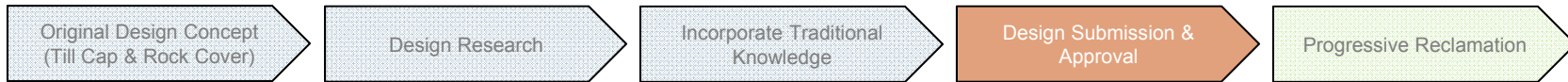
- TSP and deposition/quality measurements of any dust generated from the closed waste rock and till area

**Wildlife**

- wildlife use of the area



# NCRP – Closure Planning Process



NCRP Cover Design & Closure Plan was submitted to the Wek'èezhii Land and Water Board in January 2016

- **DDMI requires approval from WLWB prior to starting construction**

Q: Are you supportive of the design and construction plans for the NCRP?

# Questions?