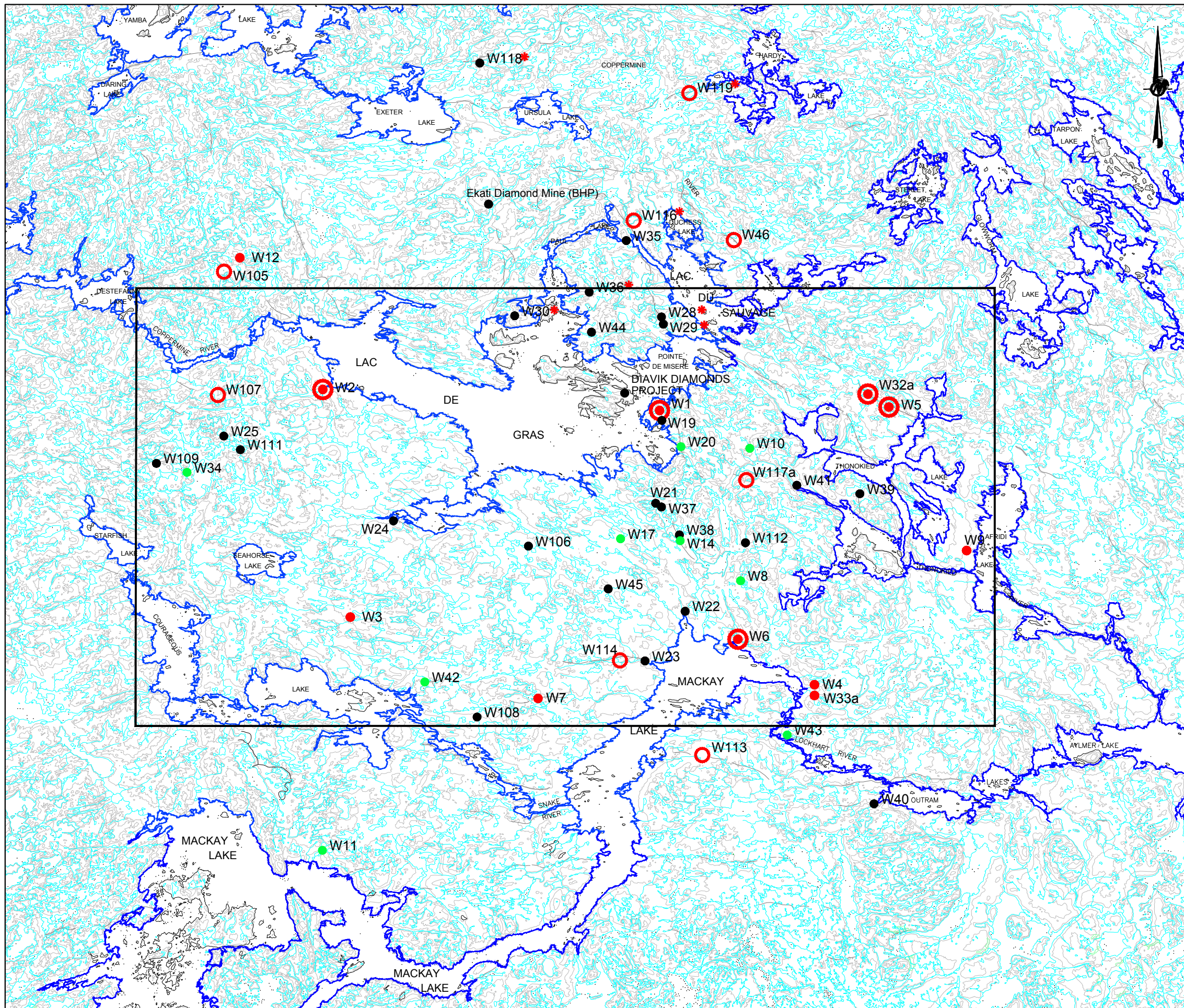
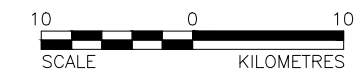


L:\DiavikDiamondMine2012\inc\AEMP Design Plan\99_PROJECTS\1648005\02_PRODUCTION\11000-GC-0042.dwg Apr 18, 2017 - 2:44pm



- LEGEND**
- BOUNDARY OF INTENSIVE DEN SEARCH AREA
 - NATAL DEN SITES (1996 & 1997)
 - NATAL DEN SITES (1997)
 - NATAL DEN SITES (1996)
 - ACTIVE DEN SITES
 - OLD OR INACTIVE DEN SITES
 - W1 DATABASE RECORD
 - W30* SOURCE BHP(1995,1997)
 - W32a ALTERNATE NATAL DEN

REFERENCE
 NATIONAL TOPOGRAPHICAL DATA BASE SETS 76C, 76D, 75M, AND 75N
 FROM GEOMATICS CANADA
 SOURCE: PENNER AND ASSOCIATES

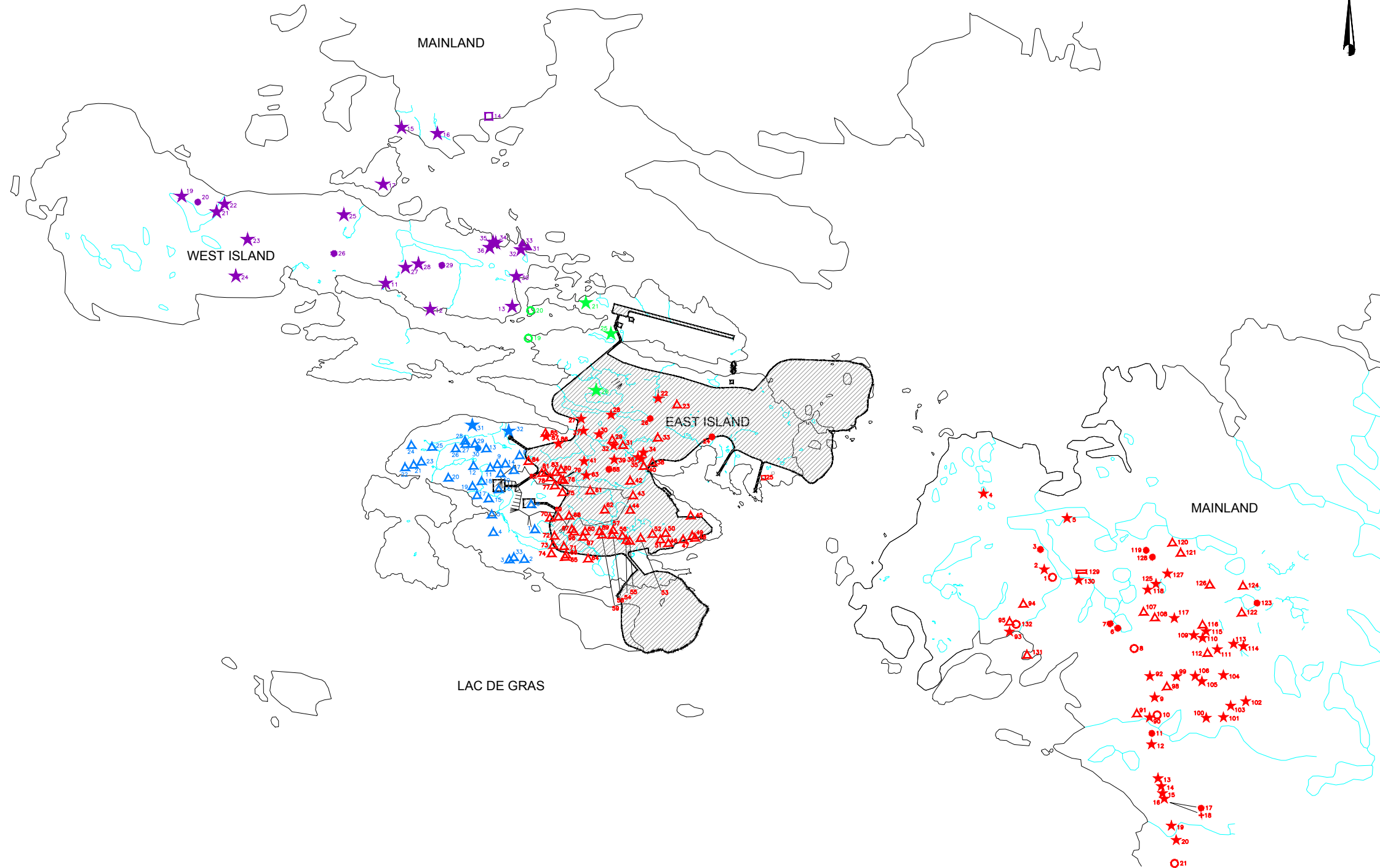


PROJECT
**DIABIK DIAMOND MINES
 NORTHWEST TERRITORIES**

TITLE
WOLF DEN SITES

	PROJECT	1648005	FILE No.	11000-GC-0042
	DESIGN	TD	04/11/09	SCALE AS SHOWN REV. 0
	CADD	RFM	12/01/17	
	CHECK	LJ	18/04/17	
	REVIEW	GM	18/04/17	FIGURE: 3-28

L:\DiavikDiamondMine2012\Inc\AEMP_Design_Plan\99_PROJECTS\1648005\02_PRODUCTION\11000-GC-0043.dwg Apr 18, 2017 - 2:38pm



LEGEND

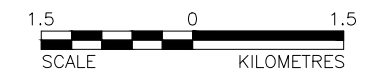
- ★ ARTIFACT SCATTER
 - ▲ QUARRY SITE
 - ISOLATED FIND
 - STONE FEATURE/BURIAL
 - CAMP SITE
 - ▲ CAMP SITE (HEARTHES)
 - ▭ WOODEN POLES
 - ✚ BURIAL SITE
 - ▨ PROJECT FOOTPRINT
- LcNs
 - LcNt
 - LdNs
 - LdNt

NOTE

MAP IN NAD27 COORDINATE SYSTEM.

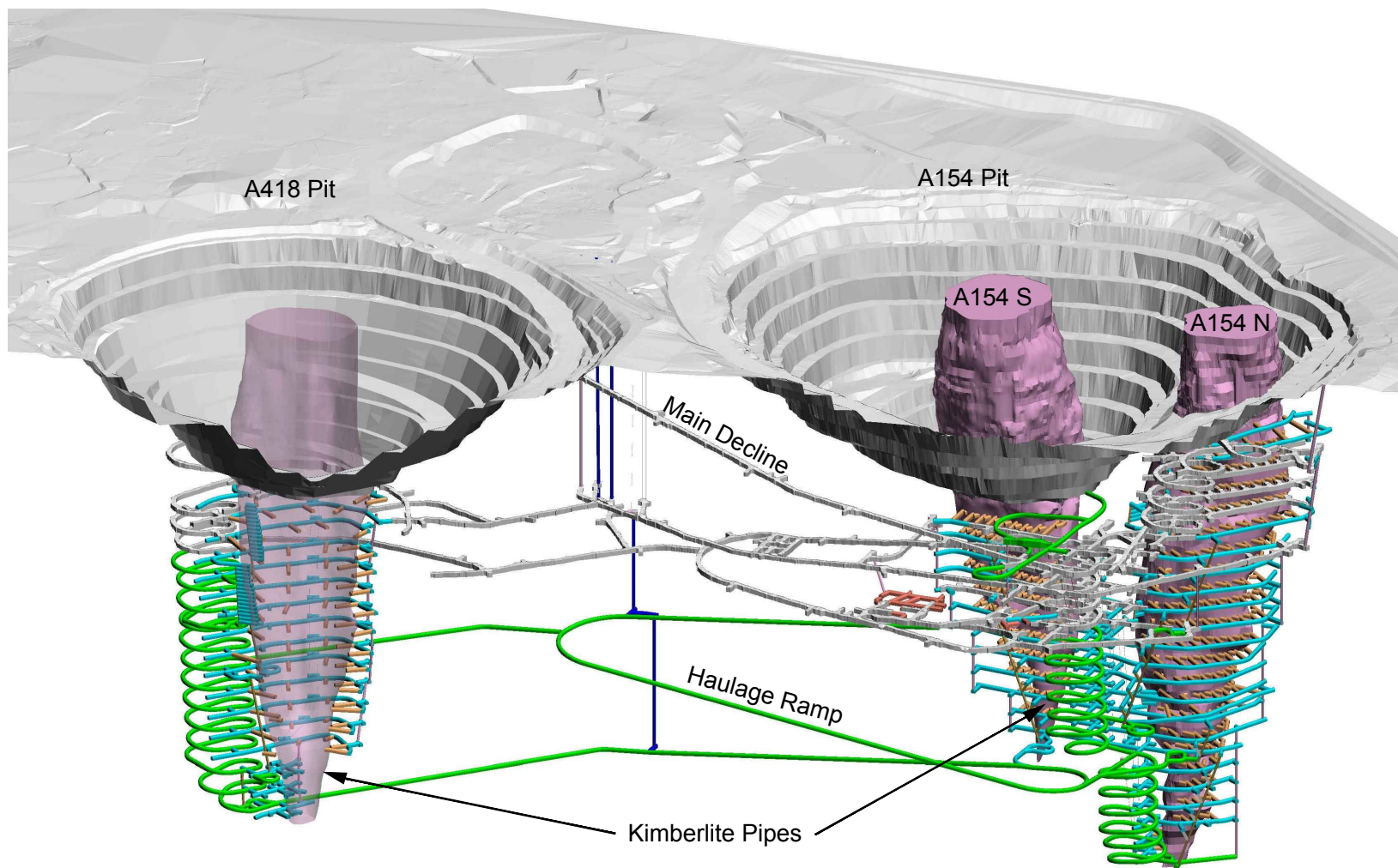
REFERENCE

BORDEN LOCATIONS SUPPLIED BY FEDIRCHUK McCULLOUGH & ASSOCIATES LTD.



PROJECT		DIAVIK DIAMOND MINES NORTHWEST TERRITORIES	
TITLE		ARCHAEOLOGICAL SITES AND MINE FOOTPRINTS	
PROJECT	1648005	FILE No.	11000-GC-0043
DESIGN	TD	04/11/09	SCALE AS SHOWN REV. 0
CADD	RFM	12/01/17	FIGURE: 3-29
CHECK	LJ	18/04/17	
REVIEW	GM	18/04/17	



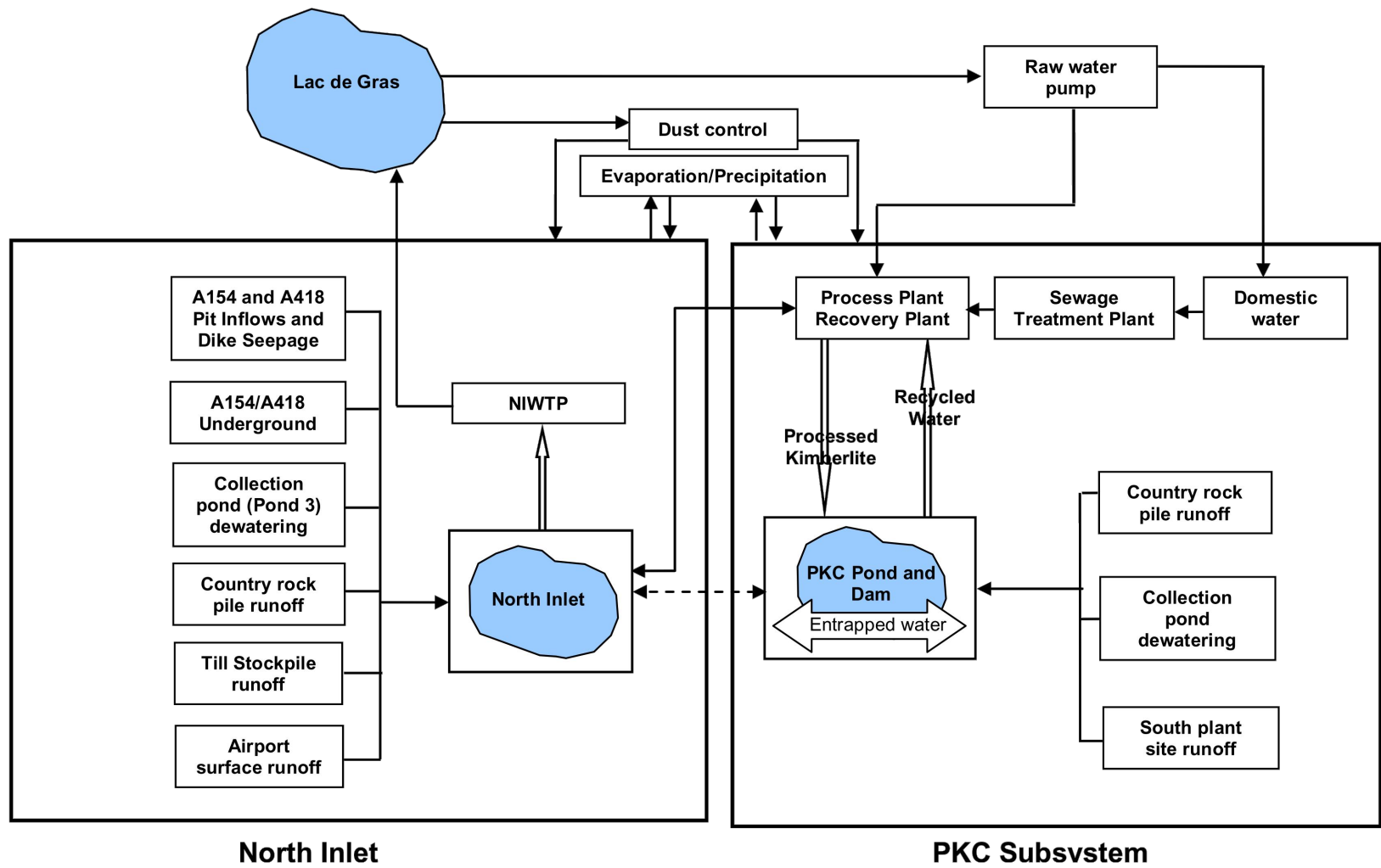


SCHEMATIC ONLY, NOT TO SCALE

PROJECT		DIAVIK DIAMOND MINES NORTHWEST TERRITORIES			
TITLE		OPEN-PIT AND UNDERGROUND MINE DESIGN			
PROJECT	1648005	FILE No.	11000-GC-0044		
DESIGN	LJ	16/12/22	SCALE	AS SHOWN	REV. 0
CADD	VI	16/01/17	FIGURE 4-1		
CHECK	LJ	18/04/17			
REVIEW	GM	18/04/17			



SOURCE
IMAGE PROVIDED BY DDMI.



SCHMATIC ONLY, NOT TO SCALE





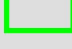

PROJECT		DIAVIK DIAMOND MINES NORTHWEST TERRITORIES	
TITLE		CONCEPTUAL WATER MANAGEMENT SYSTEM	
PROJECT No.	1648005	FILE No.	11000-GC-0045
DESIGN	LJ 16/12/22	SCALE	AS SHOWN REV. 0
CADD	VI 16/01/17	FIGURE 4-2	
CHECK	LJ 18/04/17		
REVIEW	GM 18/04/17		

NOTES

SOUTH COUNTRY ROCK PILE PONDS NOT INCLUDED.





	Waste Transfer Area (Active and Former)
	Bulk Hydrocarbon Storage
	Inert Waste Landfill (Active and Former)
	Explosives Storage & Manufacturing
	Country Rock Pile (Hydrocarbon-impacted rock disposed in Type III dumps)
	Other Chemical Storage Area

SCHEMATIC ONLY, NOT TO SCALE

PROJECT
**DIAVIK DIAMOND MINES
NORTHWEST TERRITORIES**

TITLE
**AREAS WITH POTENTIAL FOR
CONTAMINATED MATERIALS AT CLOSURE**








PROJECT No.	1648005	FILE No.	11000-GC-0046
DESIGN	LJ 16/12/22	SCALE	AS SHOWN
CADD	VI 16/01/17	REV.	0
CHECK	LJ 18/04/17	FIGURE 4-3	
REVIEW	GM 18/04/17		

REFERENCE

ORIGINAL DRAWING PROVIDED BY DDMI.

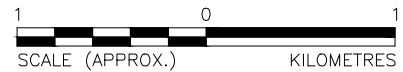


LEGEND

-  MINE INFRASTRUCTURE AREAS
-  NORTH INLET AREA
-  OPEN PIT, UNDERGROUND AND DIKE AREAS
-  PKC AREA
-  WASTEROCK AND TILL AREA

SOURCE

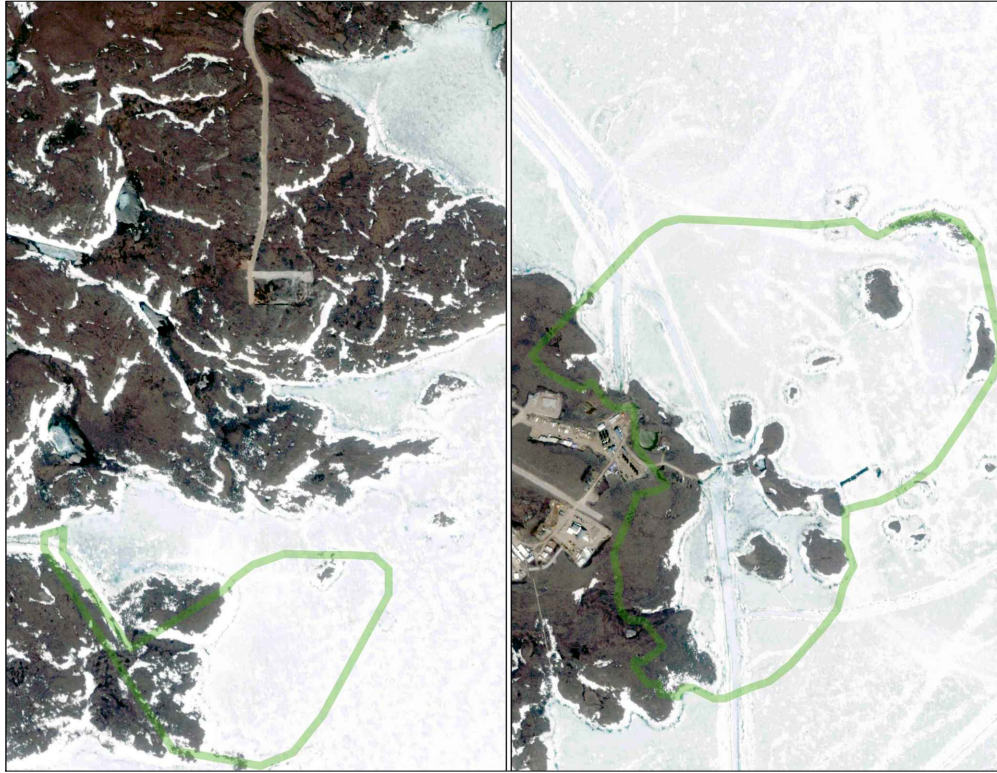
IMAGE PROVIDED BY DDMI



PROJECT		DIAVIK DIAMOND MINES NORTHWEST TERRITORIES			
TITLE		AREA DESIGNATIONS FOR CLOSURE PLANNING			
PROJECT		1648005	FILE No.		11000-GC-0000
DESIGN	TD	28/10/09	SCALE	AS SHOWN	REV. 0
CADD	RFM	08/12/16	FIGURE: 5-1		
CHECK	LJ	18/04/17			
REVIEW	GM	18/04/17			



**FIGURE 5-2a
PRE-DEVELOPMENT
(2000)**



**FIGURE 5-2b
EXISTING DEVELOPMENT
(2015)**



**FIGURE 5-2c
FINAL DEVELOPMENT
(2024)**



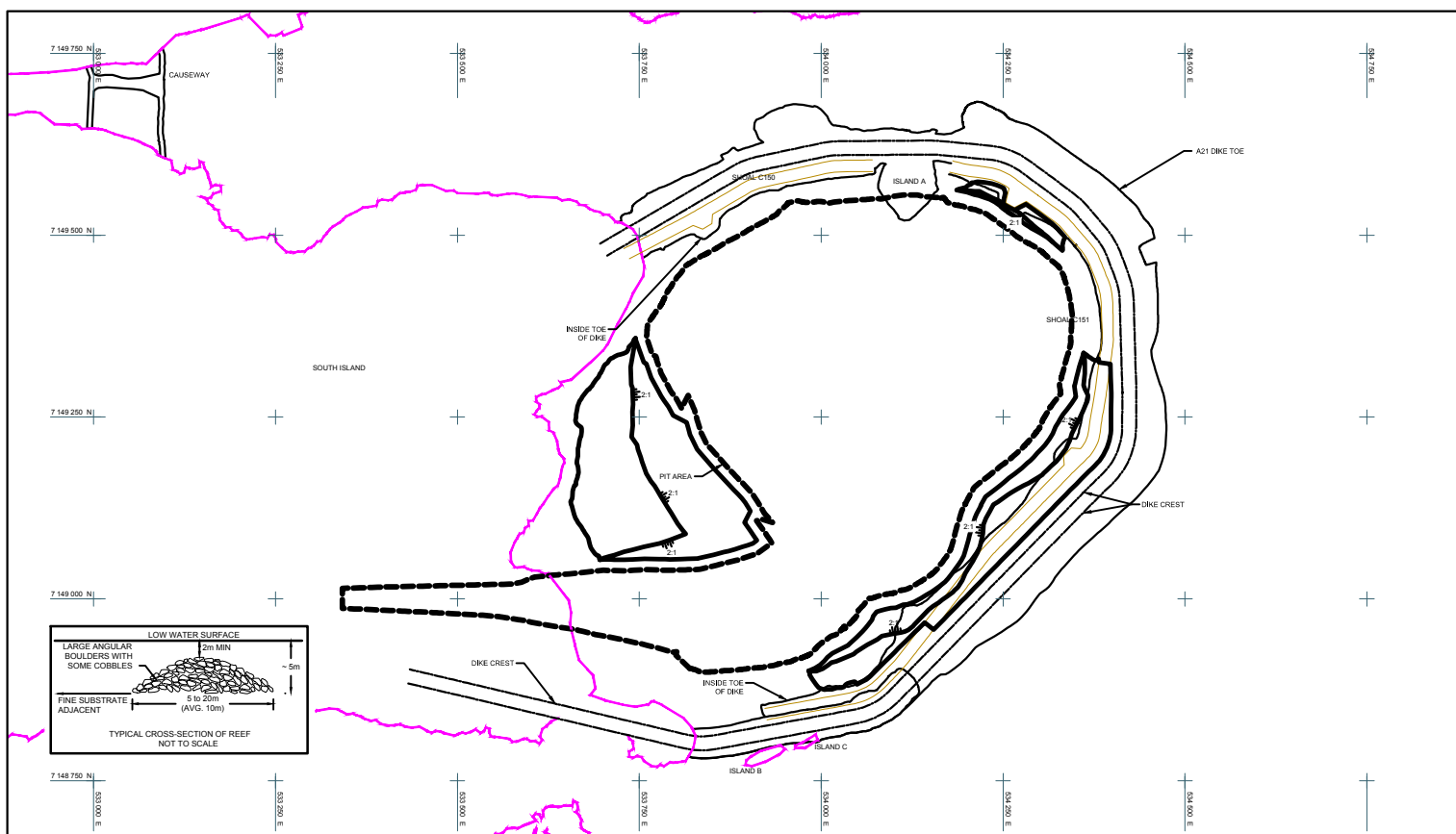
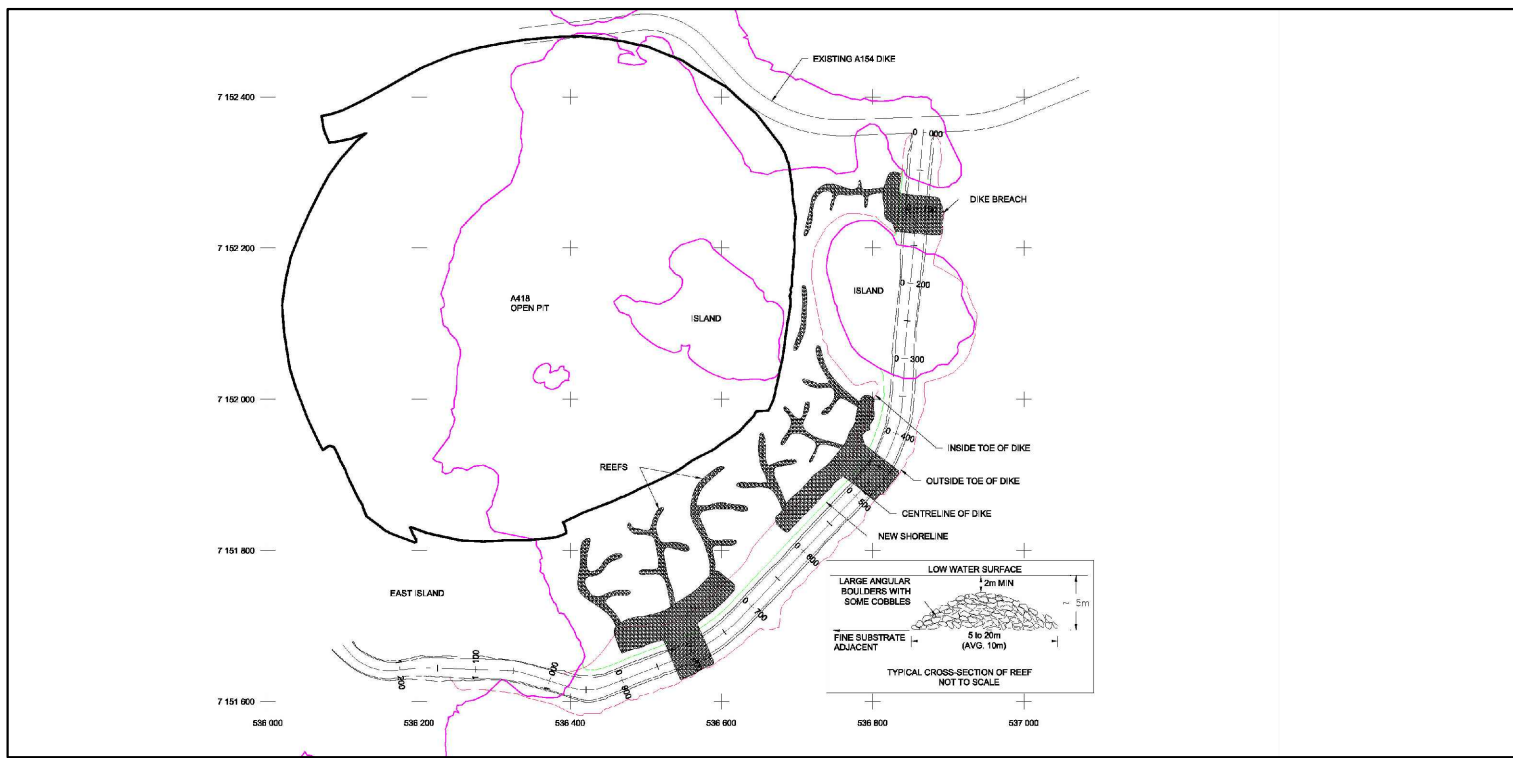
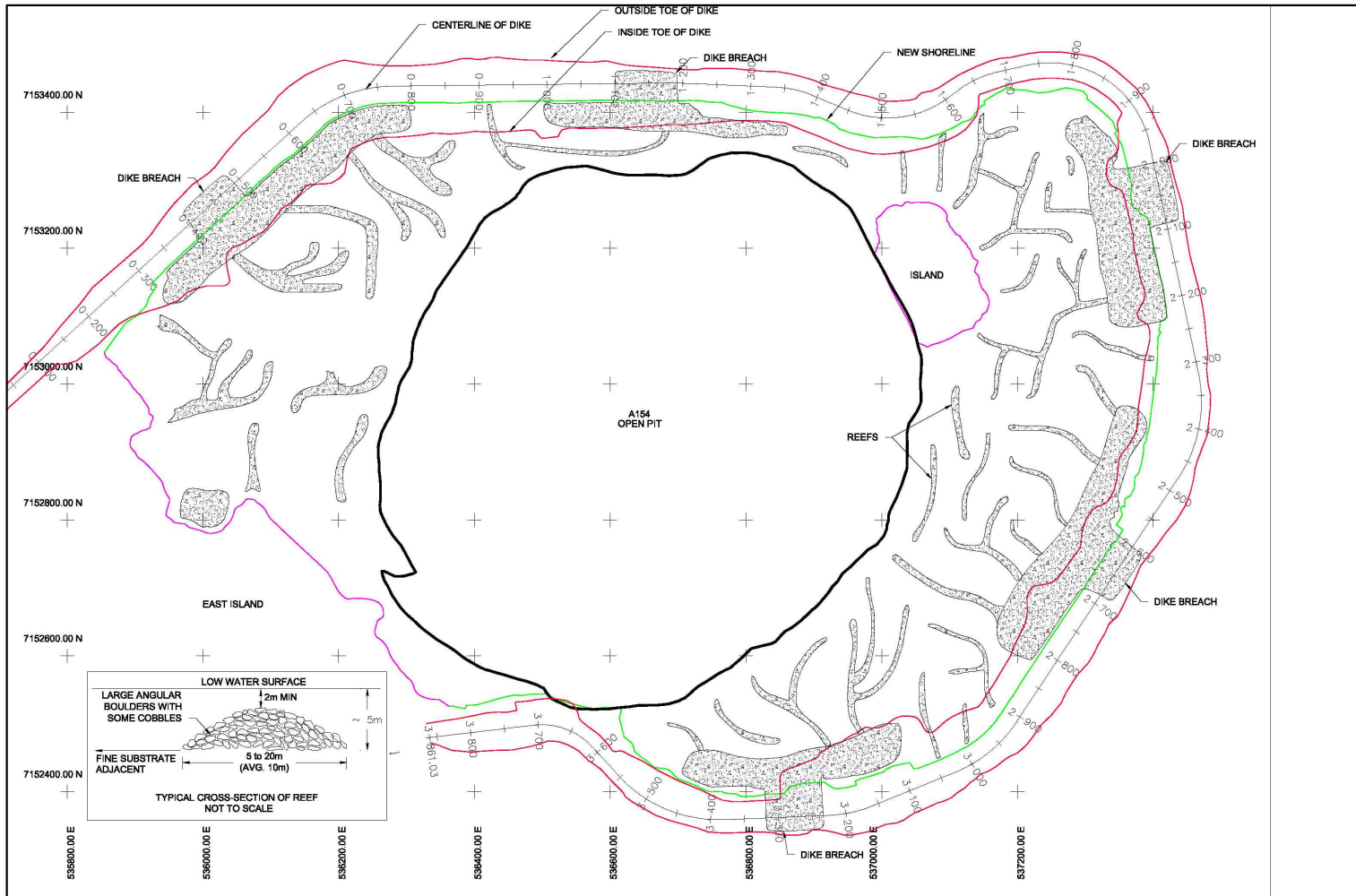
500 0 500
SCALE (APPROX.) METRES

SOURCE
IMAGES PROVIDED BY DDMI

PROJECT		DIAVIK DIAMOND MINES NORTHWEST TERRITORIES	
TITLE		OPEN PIT, UNDERGROUND AND DIKE AREAS - SITE DEVELOPMENT	
PROJECT	1648005	FILE No.	11000-GC-0001
DESIGN	TD	11/11/09	SCALE AS SHOWN REV. 0
CADD	RFM	12/01/17	
CHECK	LJ	18/04/17	
REVIEW	GM	18/04/17	



FIGURE: 5-2



SOURCE
PLAN DEVELOPED FROM INFORMATION PROVIDED BY DDMI.

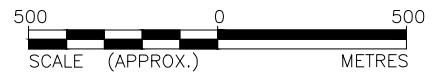
PROJECT		DIAVIK DIAMOND MINES NORTHWEST TERRITORIES	
TITLE		FISH HABITAT DESIGN - A154, A418 AND A21 DIKE AREAS	
PROJECT	1648005	FILE No.	11000-GC-0002
DESIGN	TD	04/11/09	SCALE AS SHOWN REV. 0
CADD	RFM	30/03/17	
CHECK	LJ	18/04/17	
REVIEW	CM	18/04/17	

FIGURE: 5-3

A154/A418



A21



PROJECT		DIAVIK DIAMOND MINES NORTHWEST TERRITORIES			
TITLE		PREFERRED FINAL OPEN-PIT, UNDERGROUND AND DIKE AREA LANDSCAPE			
PROJECT		1648005	FILE No. 11000-GC-0003		
DESIGN	TD	20/11/09	SCALE	AS SHOWN	REV. 0
CADD	RFM	05/04/17	FIGURE: 5-4		
CHECK	LJ	18/04/17			
REVIEW	GM	18/04/17			

SOURCE

IMAGE PROVIDED BY DDMI

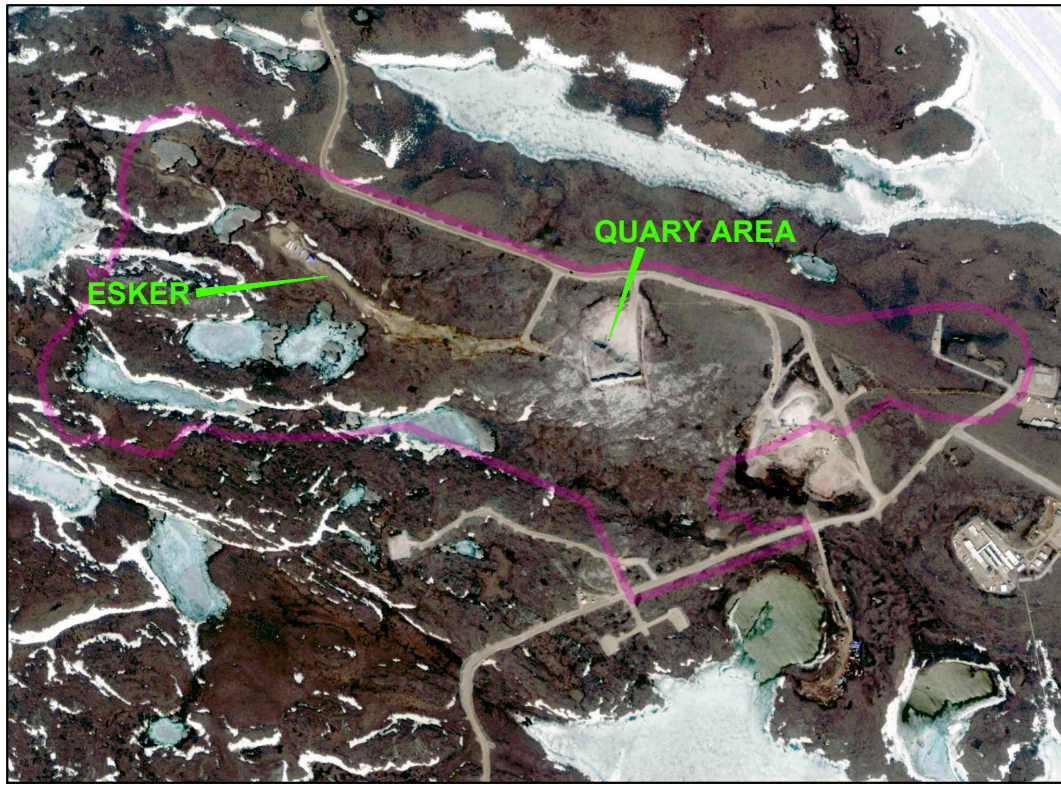


Activity	2017	2018	2019	2020	2021	2022	2023	2024	2025	2026	2027	2028	2029	2030	2031	2032
Underground A418/A154																
Open Pit Mining A21																
Community & Regulator Engagement																
Final Closure and Reclamation Plan																
Final Engineering																
Complete Fish Habitat Construction																
Decommission Surface Mine Infrastructure																
Decommission Underground																
Flood Mine Areas - Clarify Water																
Decommission Dikes																
Performance Monitoring																
Engineering Inspections																
Effects Monitoring																
Reclamation Completion Reporting																
Performance Assessment Reporting																

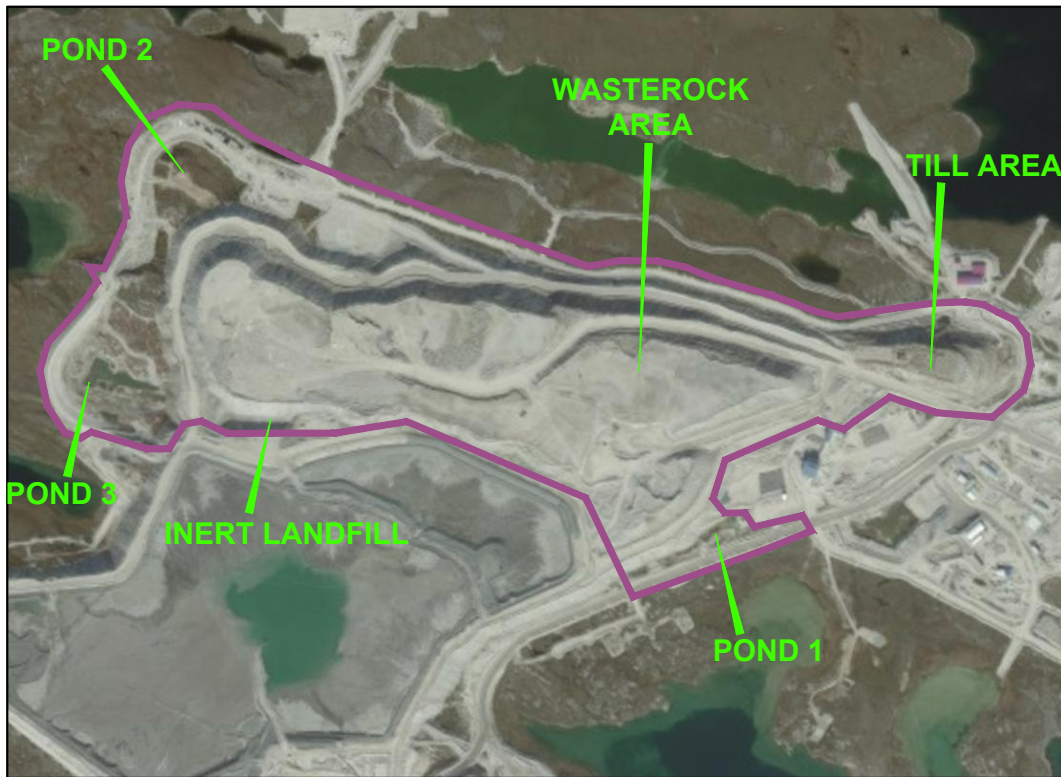
PROJECT		DIAVIK DIAMOND MINES NORTHWEST TERRITORIES						
TITLE		CLOSURE ACTIVITY SCHEDULE OPEN-PIT, UNDERGROUND AND DIKE AREAS						
PROJECT No.		1648005		FILE No.		11000-GC-0004		
DESIGN	TD	25/11/09		SCALE	N.T.S.		REV.	0
CADD	RFM	14/04/17		FIGURE 5-5				
CHECK	LJ	18/04/17						
REVIEW	GM	18/04/17						



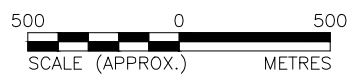
**FIGURE 5-6a
PRE-DEVELOPMENT
(2000)**



**FIGURE 5-6b
EXISTING DEVELOPMENT
(2015)**



**FIGURE 5-6c
FINAL DEVELOPMENT
(2024)**



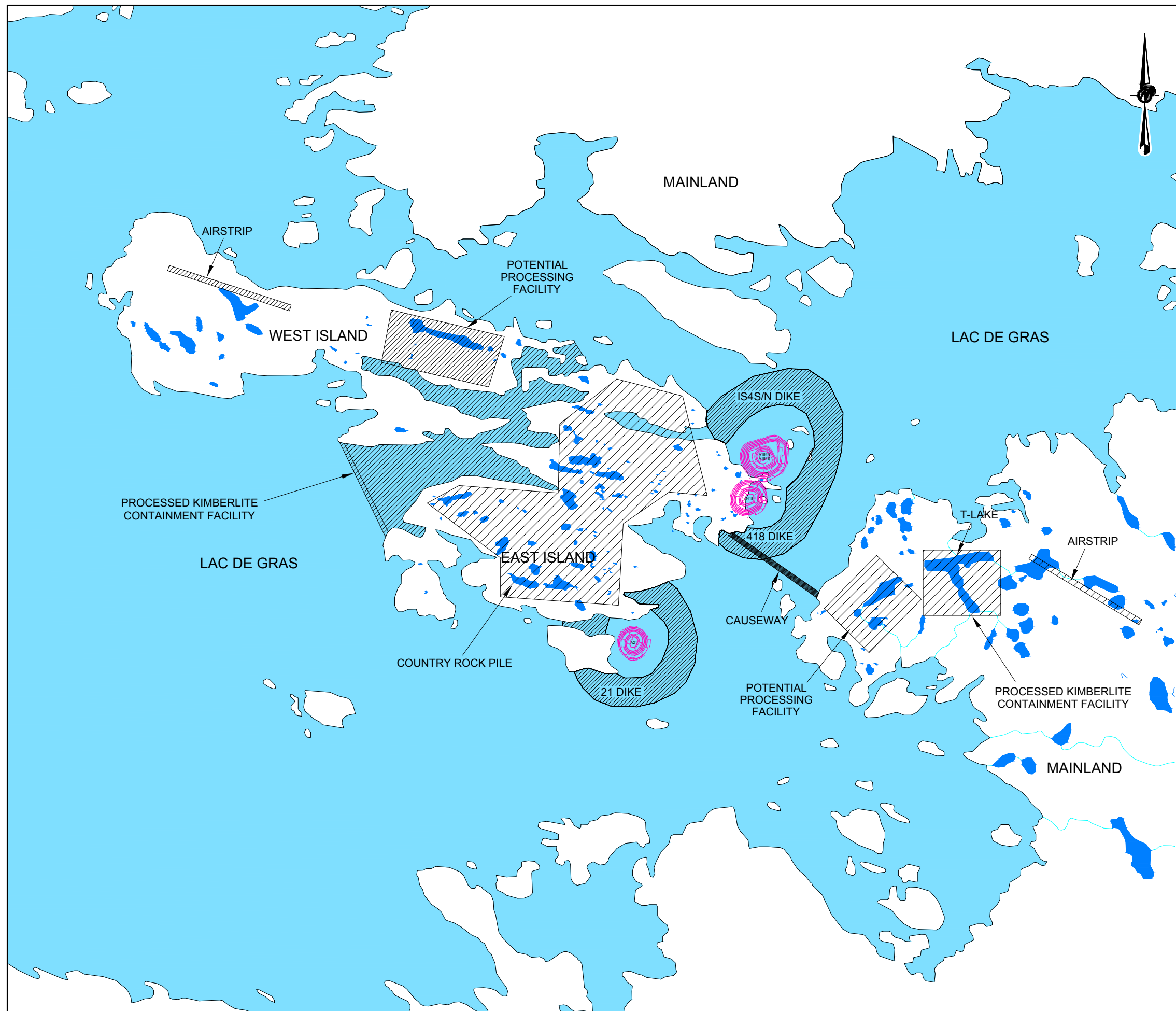
SOURCE
IMAGES PROVIDED BY DDMI

PROJECT		DIAVIK DIAMOND MINES NORTHWEST TERRITORIES	
TITLE		WASTE ROCK AND TILL AREA - SITE DEVELOPMENT	
PROJECT	1648005	FILE No.	11000-GC-0005
DESIGN	TD	11/11/09	SCALE AS SHOWN REV. 0
CADD	RFM	12/01/17	
CHECK	LJ	18/04/17	
REVIEW	GM	18/04/17	


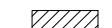


FIGURE: 5-6

L:\DiavikDiamondMine2012\Inc\AEMP_Design_Plan\99_projects\1648005\02_PRODUCTION\11000\1648005-11000-GC-0006.dwg Apr 18, 2017 - 3:27pm

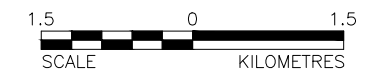


LEGEND

-  LAC DE GRAS OPTION
-  T-LAKE OPTION

REFERENCE

NATIONAL TOPOGRAPHICAL DATA BASE SETS 76C AND 76D, FIRST EDITION.

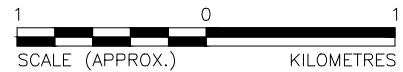


PROJECT		DIAVIK DIAMOND MINES NORTHWEST TERRITORIES	
TITLE		PROCESSED KIMBERLITE CONTAINMENT AND WASTE ROCK ORIGINAL SITING OPTIONS	
PROJECT	1648005	FILE No.	11000-GC-0006
DESIGN	TD	04/11/09	SCALE AS SHOWN REV. 0
CADD	RFM	08/12/16	
CHECK	LJ	18/04/17	
REVIEW	GM	18/04/17	



FIGURE: 5-7

L:\DiavikDiamondMine2012\inc\AEMP_Design_Plan\99_PROJECTS\1648005\02_PRODUCTION\11000-GC-0007.dwg Apr 18, 2017 - 3:23pm



PROJECT		DIAVIK DIAMOND MINES NORTHWEST TERRITORIES			
TITLE		WASTE ROCK TILL AREA DRAINAGE BASINS			
PROJECT		1648005	FILE No.		11000-GC-0007
DESIGN	TD	28/10/09	SCALE	AS SHOWN	REV. 0
CADD	RFM	08/12/16	FIGURE: 5-8		
CHECK	LJ	18/04/17			
REVIEW	GM	18/04/17			

SOURCE
IMAGE PROVIDED BY DDMI



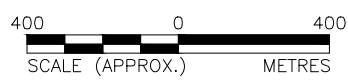
**FIGURE 5-11a
PRE-DEVELOPMENT
(2000)**



**FIGURE 5-11b
EXISTING DEVELOPMENT
(2015)**



**FIGURE 5-11c
FINAL DEVELOPMENT
(2024)**



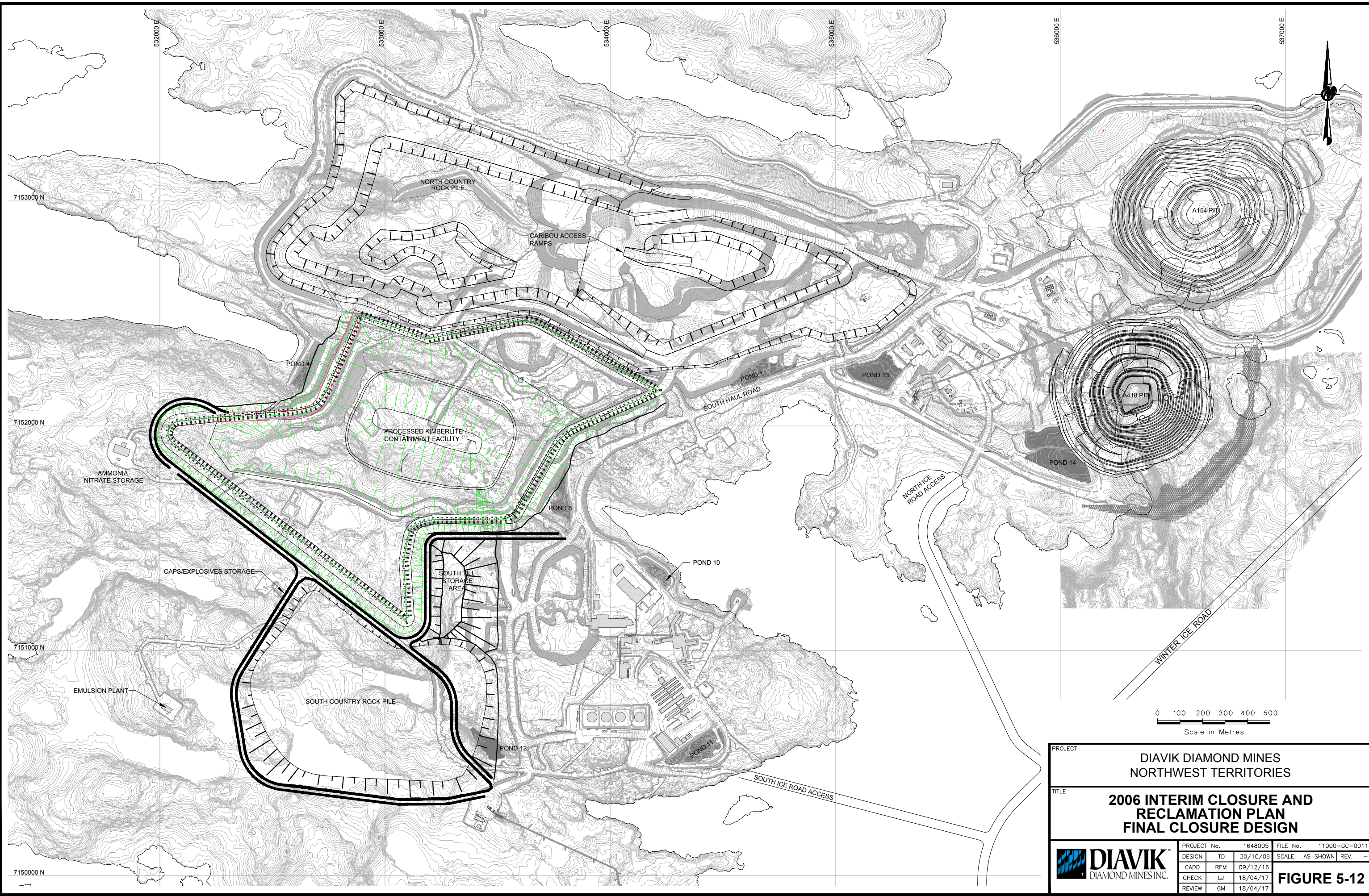
SOURCE
IMAGES PROVIDED BY DDMI

PROJECT		DIAVIK DIAMOND MINES NORTHWEST TERRITORIES	
TITLE		PROCESSED KIMBERLITE CONTAINMENT AREA - SITE DEVELOPMENT	
PROJECT	1648005	FILE No.	11000-GC-0010
DESIGN	TD	11/11/09	SCALE AS SHOWN REV. 0
CADD	RFM	12/01/17	
CHECK	LJ	18/04/17	
REVIEW	GM	18/04/17	



FIGURE: 5-11

L:\DiavikDiamondMine2012\inc\AEMP Design Plan\99_projects\1648005\02_production\11000-11000-GC-0011.dwg Apr 19, 2017 - 8:23am



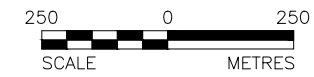
PROJECT		DIAVIK DIAMOND MINES NORTHWEST TERRITORIES	
TITLE		2006 INTERIM CLOSURE AND RECLAMATION PLAN FINAL CLOSURE DESIGN	
PROJECT No.	1648005	FILE No.	11000-GC-0011
DESIGN	TD	30/10/09	SCALE AS SHOWN REV. -
CADD	RFM	09/12/16	
CHECK	LJ	18/04/17	FIGURE 5-12
REVIEW	GM	18/04/17	



L:\DiavikDiamondMine2012\Inc\AEMP_Design_Plan\99_PROJECTS\1648005\02_PRODUCTION\11000-GC-0012.dwg Apr 18, 2017 - 3:20pm



NOT TO SCALE



LEGEND

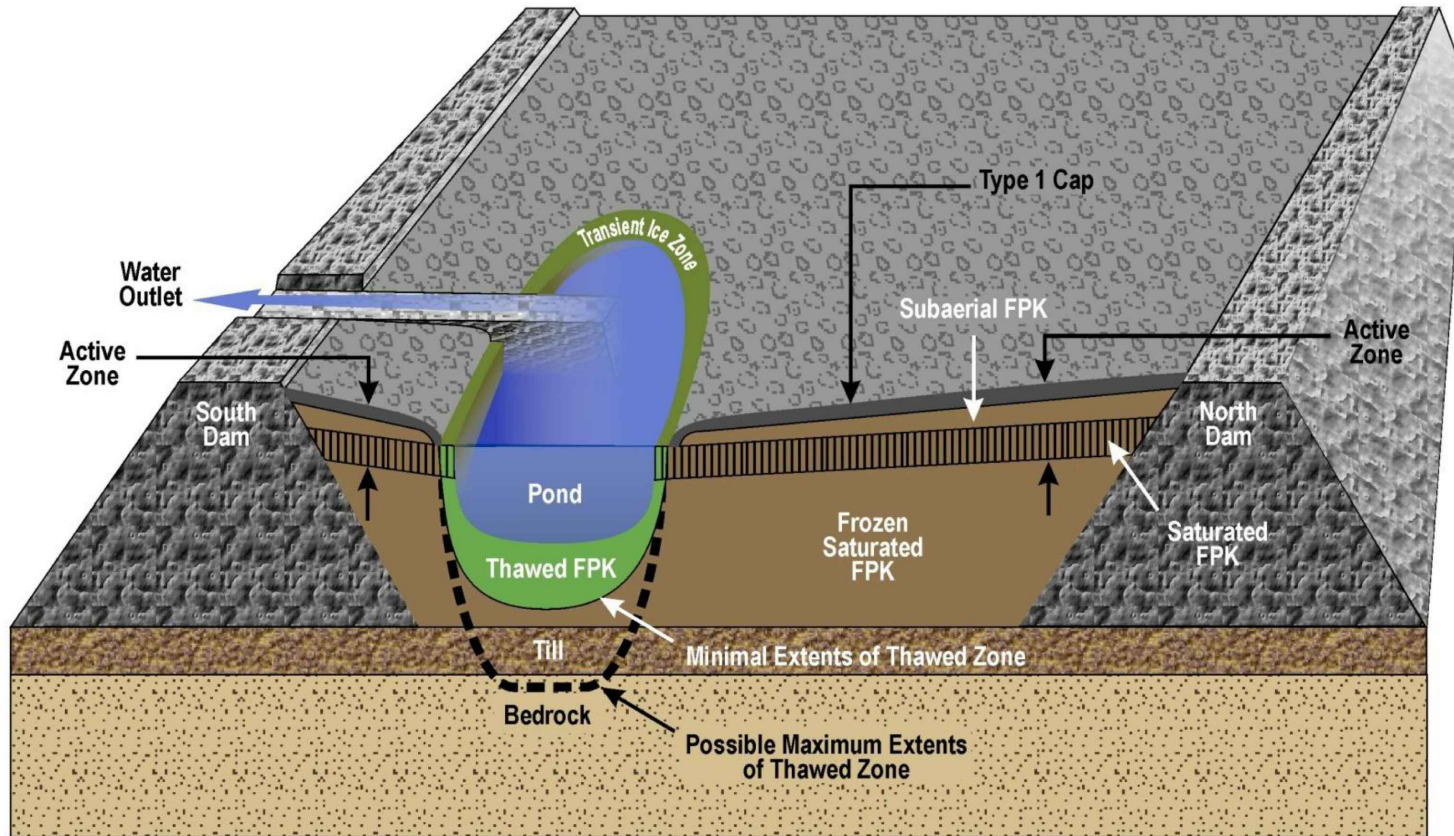
 DRAINAGE RESTORED

SOURCE

IMAGES PROVIDED BY DDMI

PROJECT		DIAVIK DIAMOND MINES NORTHWEST TERRITORIES			
TITLE		PREFERRED FINAL PROCESSED KIMBERLITE CONTAINMENT LANDSCAPE			
PROJECT	1648005	FILE No.	11000-GC-0012		
DESIGN	TD	20/11/09	SCALE	AS SHOWN	REV. 0
CADD	RFM	19/01/17			
CHECK	LJ	18/04/17	FIGURE: 5-13		
REVIEW	GM	18/04/17			





SCHEMATIC ONLY, NOT TO SCALE

PROJECT		DIAVIK DIAMOND MINES NORTHWEST TERRITORIES	
TITLE		PREFERRED FINAL PROCESSED KIMBERLITE CONTAINMENT DESIGN CONCEPT	
PROJECT	1648005	FILE No.	11000-GC-0013
DESIGN	DM	25/11/10	SCALE AS SHOWN REV. 0
CADD	RFM	09/12/16	FIGURE:5-14
CHECK	LJ	18/04/17	
REVIEW	GM	18/04/17	



Activity	2017	2018	2019	2020	2021	2022	2023	2024	2025	2026	2027	2028	2029	2030	2031	2032
PK Deposition																
Community & Regulator Engagement																
PKC Options Evaluations																
Final Closure and Reclamation Plan																
Final Engineering																
Placement of Final Surface and Wildlife Access																
Outlet Preparation																
Decommission Collection Ponds 4,5,7																
PKC Infrastructure Decommissioning																
Performance Monitoring																
Engineering Inspections																
Effects Monitoring																
Reclamation Completion Reporting																
Performance Assessment Reporting																

PROJECT		DIAVIK DIAMOND MINES NORTHWEST TERRITORIES			
TITLE		CLOSURE ACTIVITY SCHEDULE - PROCESSED KIMBERLITE CONTAINMENT AREA			
PROJECT No.		1648005		FILE No. 11000-GC-0014	
DESIGN	TD	25/11/09		SCALE	N.T.S. REV. 0
CADD	RFM	17/04/17		FIGURE 5-15	
CHECK	LJ	18/04/17			
REVIEW	GM	18/04/17			



**FIGURE 5-16a
PRE-DEVELOPMENT
(2000)**



**FIGURE 5-16b
EXISTING DEVELOPMENT
(2015)**



**FIGURE 5-16c
FINAL DEVELOPMENT
(2024)**



SOURCE
IMAGES PROVIDED BY DDMI

PROJECT		DIAVIK DIAMOND MINES NORTHWEST TERRITORIES			
TITLE		NORTH INLET AREA - SITE DEVELOPMENT			
PROJECT	1648005	FILE No.	11000-GC-0015		
DESIGN	TD	11/11/09	SCALE	AS SHOWN	REV. 0
CADD	RFM	19/01/17			
CHECK	LJ	18/04/17			
REVIEW	GM	18/04/17			



FIGURE: 5-16



NOT TO SCALE

PROJECT		DIAVIK DIAMOND MINES NORTHWEST TERRITORIES			
TITLE		PREFERRED FINAL NORTH INLET LANDSCAPE			
PROJECT		1648005	FILE No.		11000-GC-0016
DESIGN	TD	20/11/09	SCALE	AS SHOWN	REV. 0
CADD	RFM	11/01/17	FIGURE: 5-17		
CHECK	LJ	18/04/17			
REVIEW	GM	18/04/17			

SOURCE

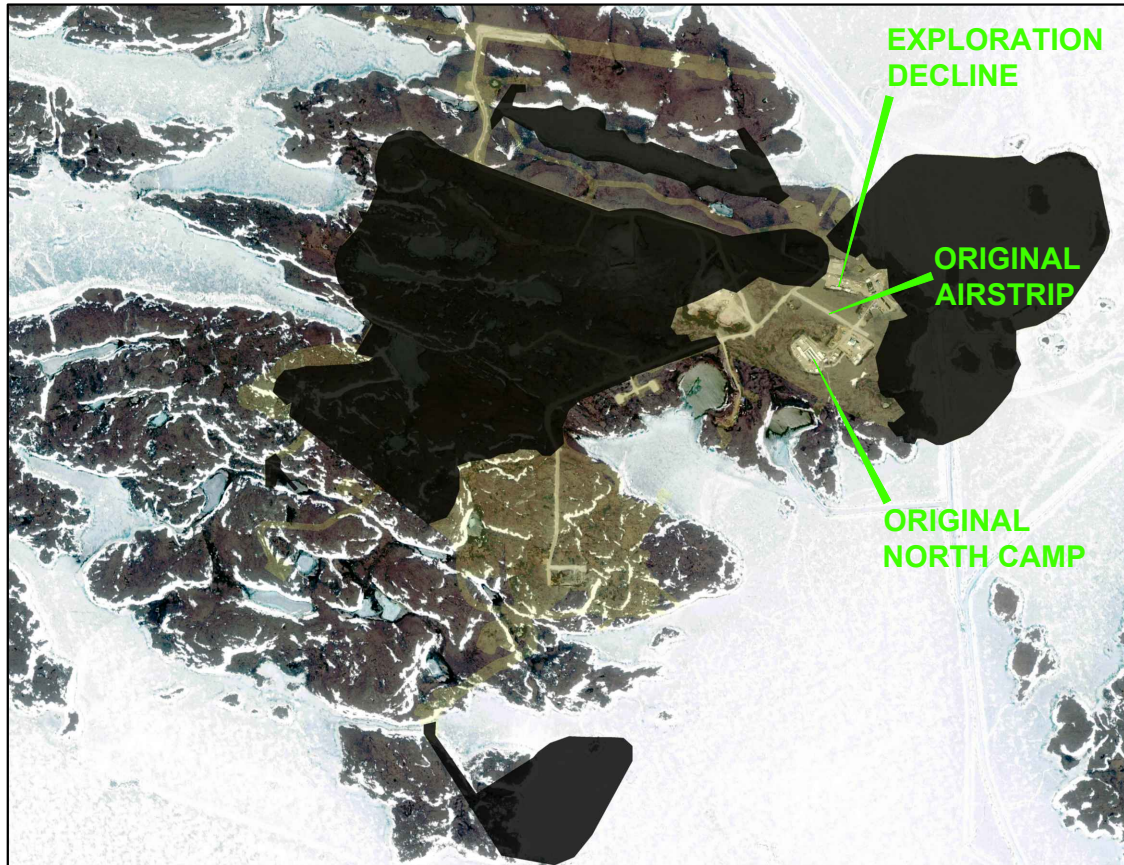
IMAGE PROVIDED BY DDMI

Activity	2017	2018	2019	2020	2021	2022	2023	2024	2025	2026	2027	2028	2029	2030	2031	2032
Mine Water Treatment																
Closure Water Treatment																
Community & Regulator Engagement																
Final Closure and Reclamation Plan																
Final Engineering																
Final NI Sediment Investigation																
Treat and Discharge NI Water																
Decommission North Inlet Dams																
Performance Monitoring																
Engineering Inspections																
Effects Monitoring																
Reclamation Completion Reporting																
Performance Assessment Reporting																

PROJECT		DIAVIK DIAMOND MINES NORTHWEST TERRITORIES						
TITLE		CLOSURE ACTIVITY SCHEDULE NORTH INLET AREA						
PROJECT No.		1648005		FILE No.		11000-GC-0017		
DESIGN	TD	25/11/09		SCALE	N.T.S.		REV.	0
CADD	RFM	17/04/17		FIGURE 5-18				
CHECK	LJ	18/04/17						
REVIEW	GM	18/04/17						



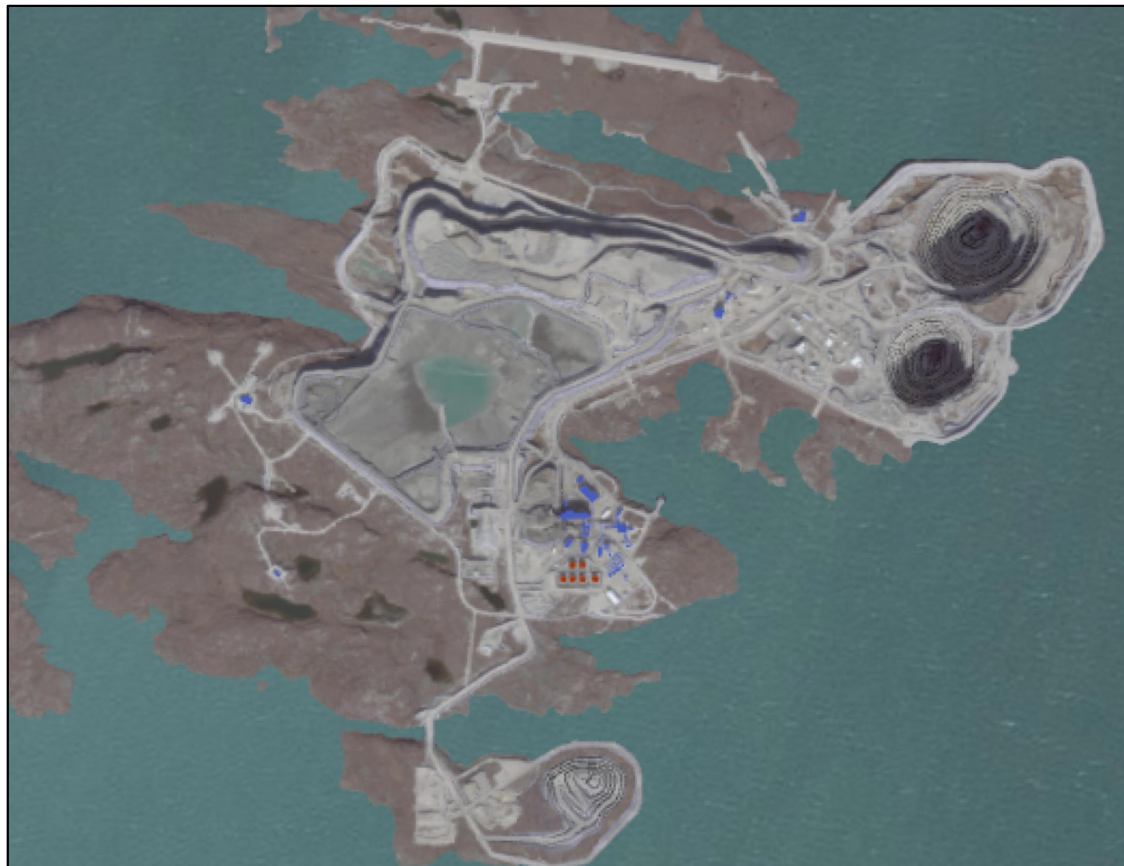
**FIGURE 5-19a
PRE-DEVELOPMENT
(2000)**



**FIGURE 5-19b
EXISTING DEVELOPMENT
(2015)**



**FIGURE 5-19c
FINAL DEVELOPMENT
(2024)**



1 0 1
SCALE (APPROX.) KILOMETRES

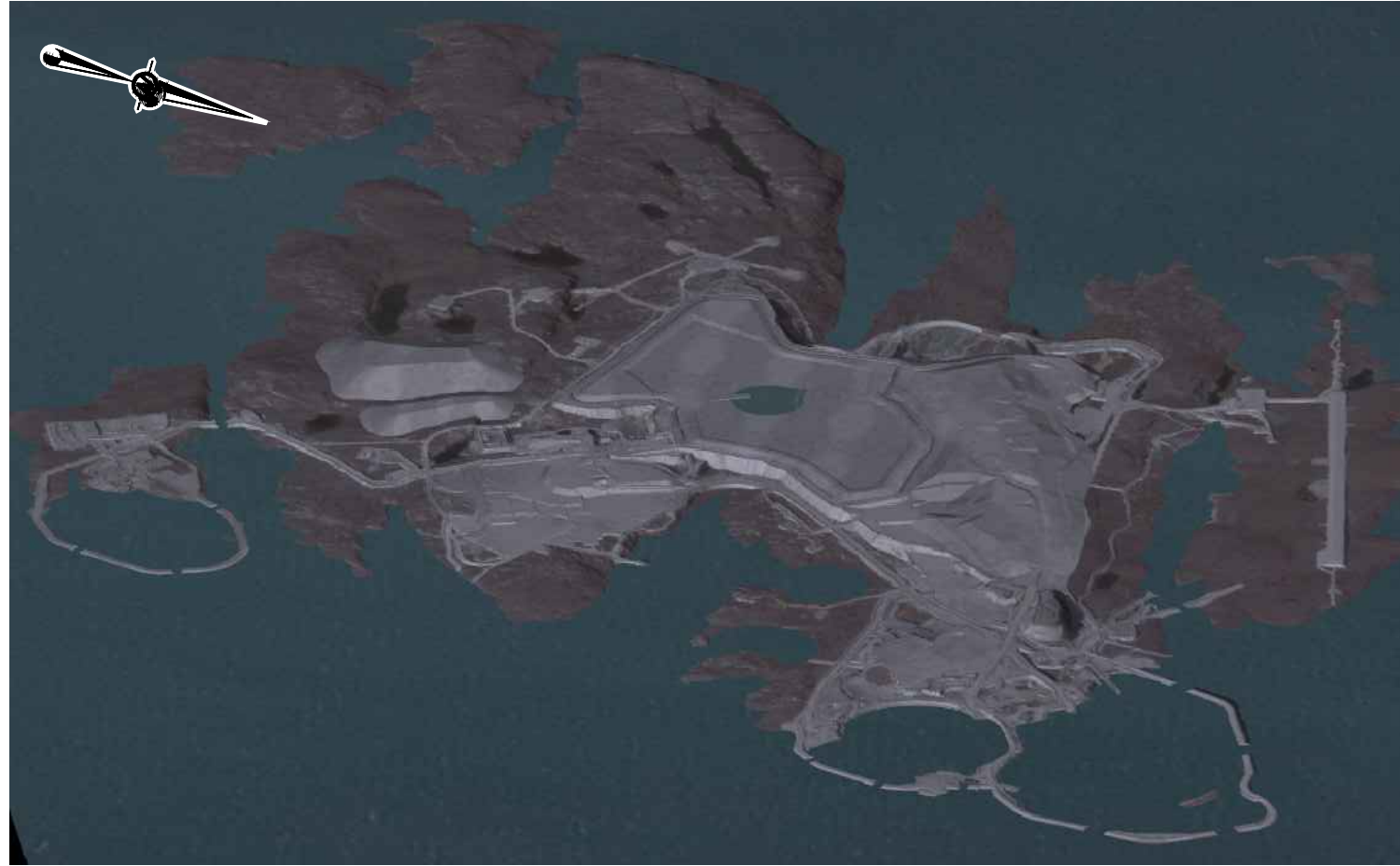
SOURCE
IMAGES PROVIDED BY DDMI

PROJECT		DIAVIK DIAMOND MINES NORTHWEST TERRITORIES			
TITLE		MINE INFRASTRUCTURE AREA - SITE DEVELOPMENT			
PROJECT	1648005	FILE No.	11000-GC-0018		
DESIGN	TD	11/11/09	SCALE	AS SHOWN	REV. 0
CADD	RFM	19/01/17			
CHECK	LJ	18/04/17			
REVIEW	GM	18/04/17			

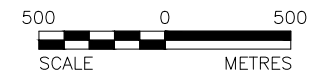
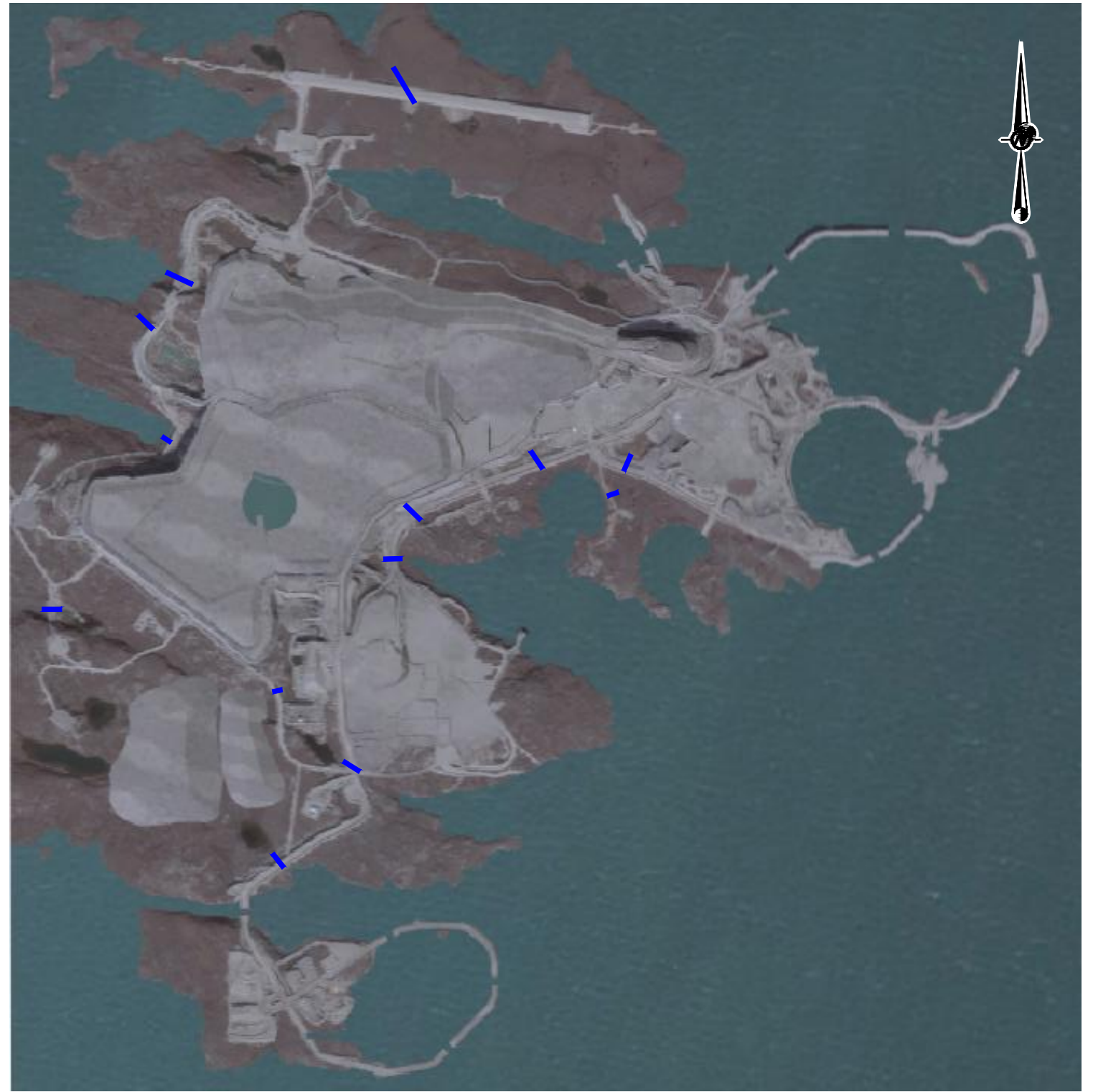


FIGURE: 5-19

L:\DiavikDiamondMine2012\Inc\AEMP_Design_Plan\99_PROJECTS\1648005\02_PRODUCTION\11000\1648005-11000-GC-0019.dwg Apr 18, 2017 - 3:06pm



NOT TO SCALE



LEGEND

— DRAINAGE RESTORED

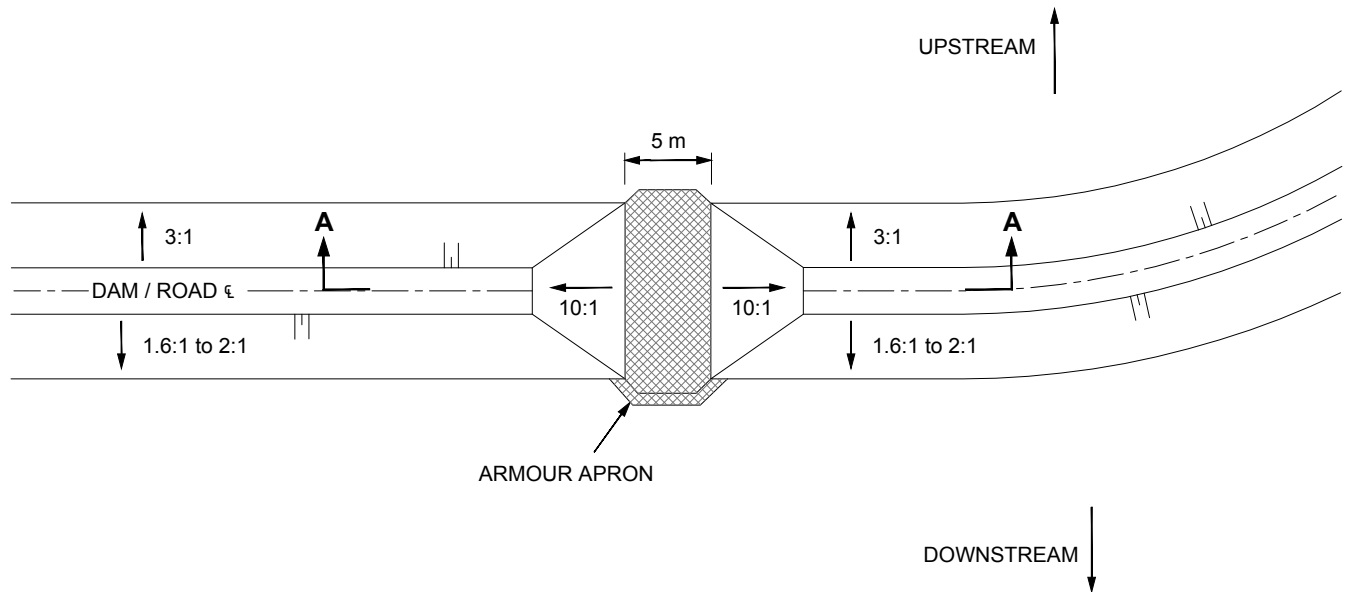
SOURCE

IMAGES PROVIDED BY DDMI

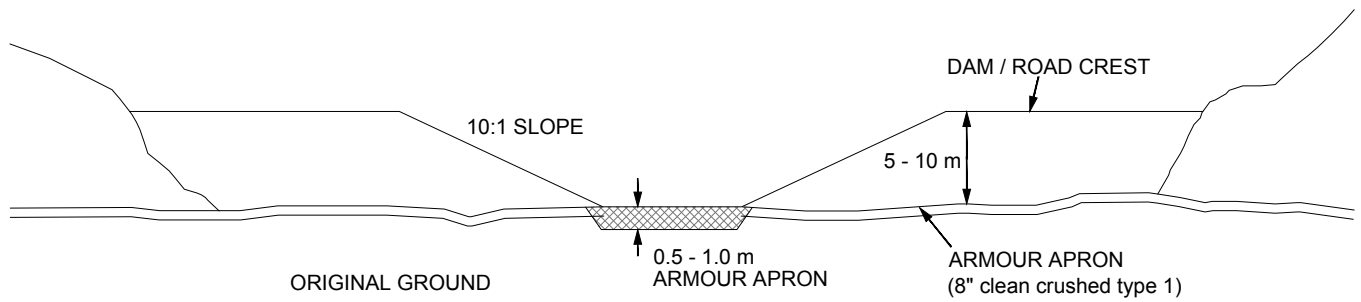
PROJECT		DIAVIK DIAMOND MINES NORTHWEST TERRITORIES	
TITLE		PREFERRED FINAL MINE INFRASTRUCTURE LANDSCAPE	
PROJECT		1648005	FILE No. 11000-GC-0019
DESIGN	TD	20/11/09	SCALE AS SHOWN REV. 0
CADD	RFM	19/01/17	
CHECK	LJ	18/04/17	FIGURE: 5-20
REVIEW	GM	18/04/17	



L:\DiavikDiamondMine2012\inc\AEMP Design Plan\99_PROJECTS\1648005\02_PRODUCTION\11000\1648005-11000-GC-0020.dwg Apr 18, 2017 - 3:05pm



PLAN VIEW



SECTION A-A

SCHMATIC ONLY, NOT TO SCALE

PROJECT		DIAVIK DIAMOND MINES NORTHWEST TERRITORIES			
TITLE		STREAM DRAINAGE RECLAMATION TYPICAL SECTION			
PROJECT	1648005	FILE No.	11000-GC-0020		
DESIGN	TD	16/10/09	SCALE	AS SHOWN	REV. 0
CADD	RFM	13/12/16	FIGURE: 5-21		
CHECK	LJ	18/04/17			
REVIEW	GM	18/04/17			

SOURCE

ORIGINAL DRAWING PROVIDED BY DDMI




Activity	2017	2018	2019	2020	2021	2022	2023	2024	2025	2026	2027	2028	2029	2030	2031	2032
Accommodation/Power/Transportation Required																
Community & Regulator Engagement																
Final Closure and Reclamation Plan																
Final Engineering																
Inventory of Assets																
Commercial Arrangements - Sale/Transfer of Assets																
Targeted Re-vegetation																
Decommission Process and Paste Plants																
Decommission Explosives Plant and Storage																
Decommission Accomodation and Other Buildings																
Decommission Fuel Storage and Power																
Decommission Waste Transfer																
Decommission Roads, Plantsite, Laydown																
Decommission Collection Ponds & Pipelipeline 10,11,12,13																
Decommission Airstrip and Landfill																
Performance Monitoring																
Engineering Inspections																
Effects Monitoring																
Reclamation Completion Reporting																
Performance Assessment Reporting																

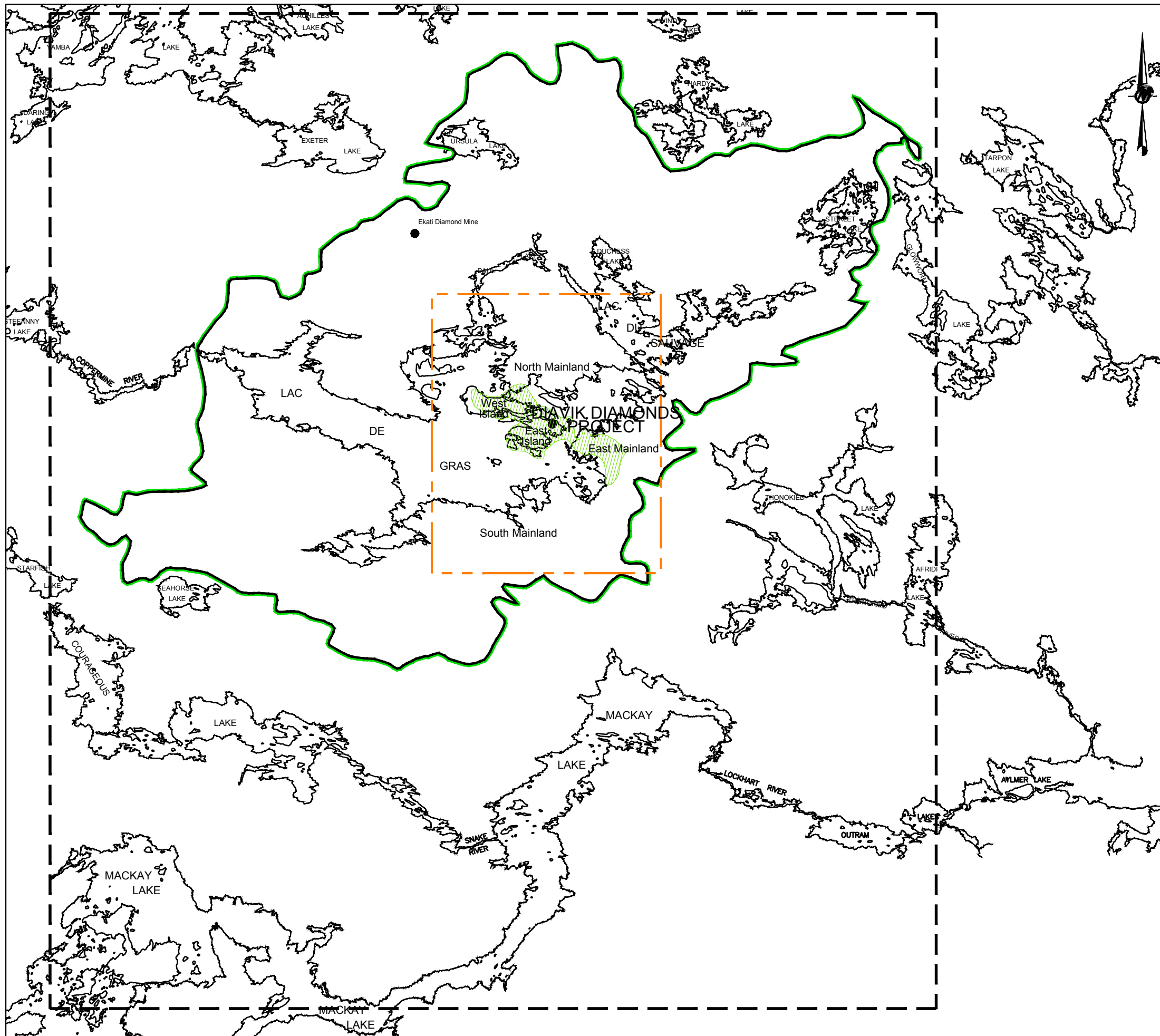
PROJECT		DIAVIK DIAMOND MINES NORTHWEST TERRITORIES			
TITLE		CLOSURE ACTIVITY SCHEDULE MINE INFRASTRUCTURE AREA			
PROJECT No.		1648005		FILE No. 11000-GC-0021	
DESIGN	TD	25/11/09		SCALE	N.T.S. REV. 0
CADD	RFM	17/04/17		FIGURE 5-22	
CHECK	LJ	18/04/17			
REVIEW	GM	18/04/17			



Activity	2017	2018	2019	2020	2021	2022	2023	2024	2025	2026	2027	2028	2029	2030	2031	2032
Underground A418/A154																
Open Pit Mining A21																
Dump Development																
Re-Mining for Backfill																
PK Deposition																
Mine and Closure Water Treatment																
Accomodation/Power/Transportation Required																
Community & Regulator Engagement																
Final Closure and Reclamation Plan																
Final Engineering																
NCRP Cover Construction																
Inventory of Assets																
Commercial Arrangements - Sale/Transfer of Assets																
Complete Fish Habitat Construction																
Targeted Re-vegetation																
Decomission Collection Ponds 1,2,3																
PKC Outlet Preparation																
Placement of Final Surface and Wildlife Access - PKC																
Decomission Surface Mine Infrstructure																
Decomission Underground																
Decomission Process and Paste Plants																
Decomission Explosives Plant and Storage																
Flood Mine Areas - Clarify Water																
Decomission Accomodation and Other Buildings																
Decomission Fuel Storage and Power																
Decomission Collection Ponds 4,5,7																
Decomission Dikes																
PKC Infastructure Decomissioning																
Decomission Waste Transfer																
Decomission Collection Ponds & Pipelipeline 10,11,12,13																
Final NI Sediment Investigation																
Treat and Discharge NI Water																
Decomission North Inlet Dams																
Decomission Airstrip and Landfill																
Performance Monitoring																
Engineering Inspections																
Effects Monitoring																
Reclamation Completion Reporting																
Performance Assessment Reporting																

PROJECT	DIAVIK DIAMOND MINES NORTHWEST TERRITORIES					
TITLE	INTEGRATED SCHEDULE OF ACTIVITIES PERMANENT CLOSURE					
	PROJECT No.	1648005	FILE No.	11000-GC-0047		
	DESIGN	LJ	16/12/22	SCALE	AS SHOWN	REV. 0
	CADD	RFM	17/04/17	FIGURE 8-1		
	CHECK	LJ	18/04/17			
REVIEW	GM	18/04/17				

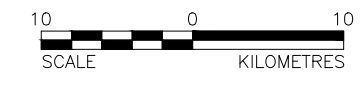
L:\DiavikDiamondMine2012\inc\AEMP_Design_Plan\99_projects\1648005\02_PRODUCTION\11000\1648005-11000-GC-0048.dwg Apr 18, 2017 - 2:37pm



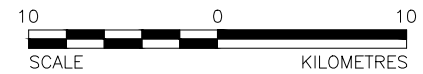
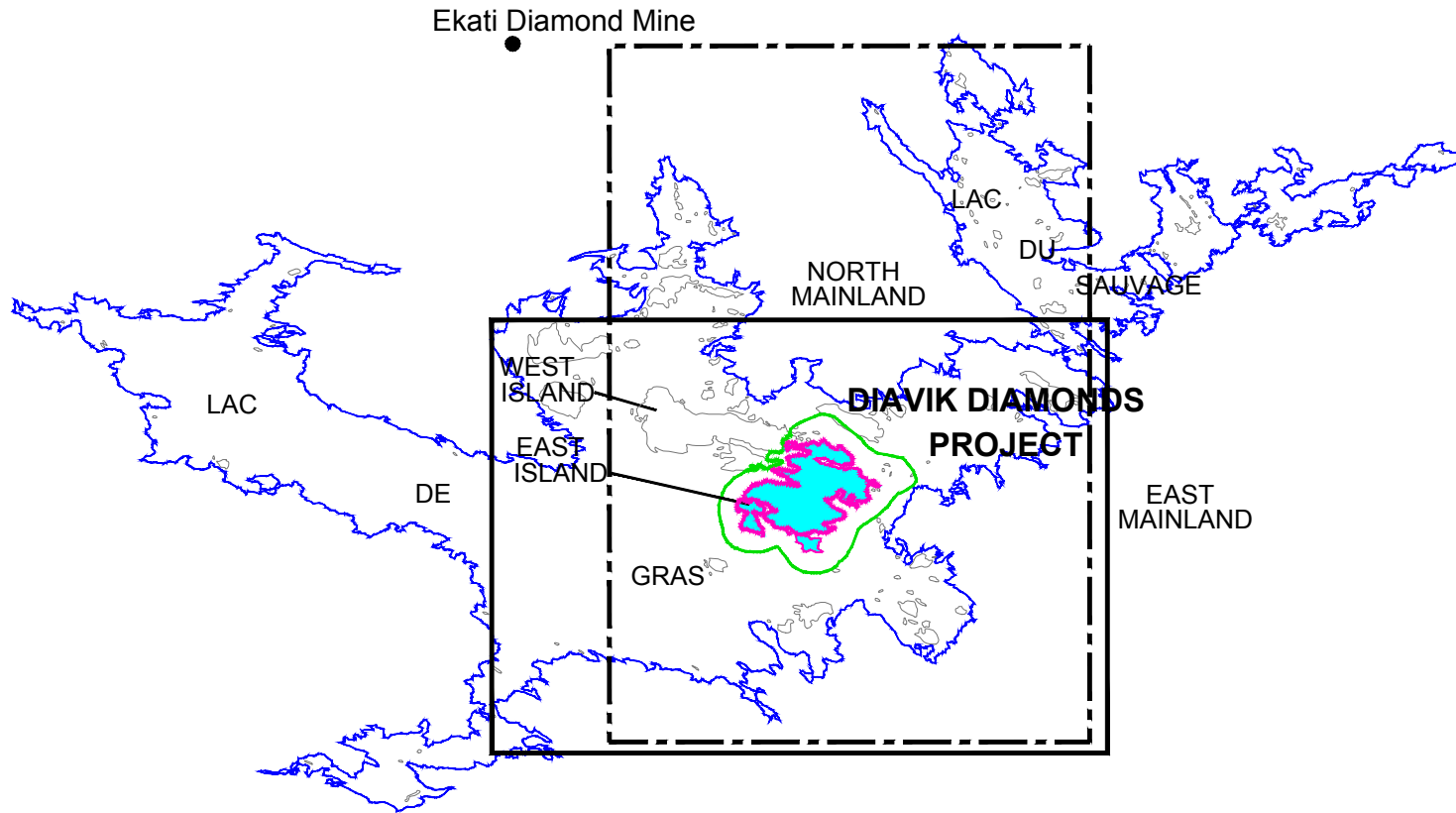
LEGEND

- WILDLIFE
- VEGETATION AND TERRAIN
- FISH AND WATER
- HERITAGE RESOURCES
- AIR QUALITY

REFERENCE
 NATIONAL TOPOGRAPHICAL DATABASE
 SETS 76C, 76D, 75M and 75N
 FROM GEOMATICS CANADA



PROJECT		DIAVIK DIAMOND MINES NORTHWEST TERRITORIES	
TITLE		REGIONAL / CUMMULATIVE STUDY AREAS	
	PROJECT	1648005	FILE No. 11000-GC-0048
	DESIGN	LJ 16/12/22	SCALE AS SHOWN REV. 0
	CADD	VI 16/01/17	
	CHECK	LJ 18/04/17	
	REVIEW	GM 18/04/17	
			FIGURE: 9-1



LEGEND

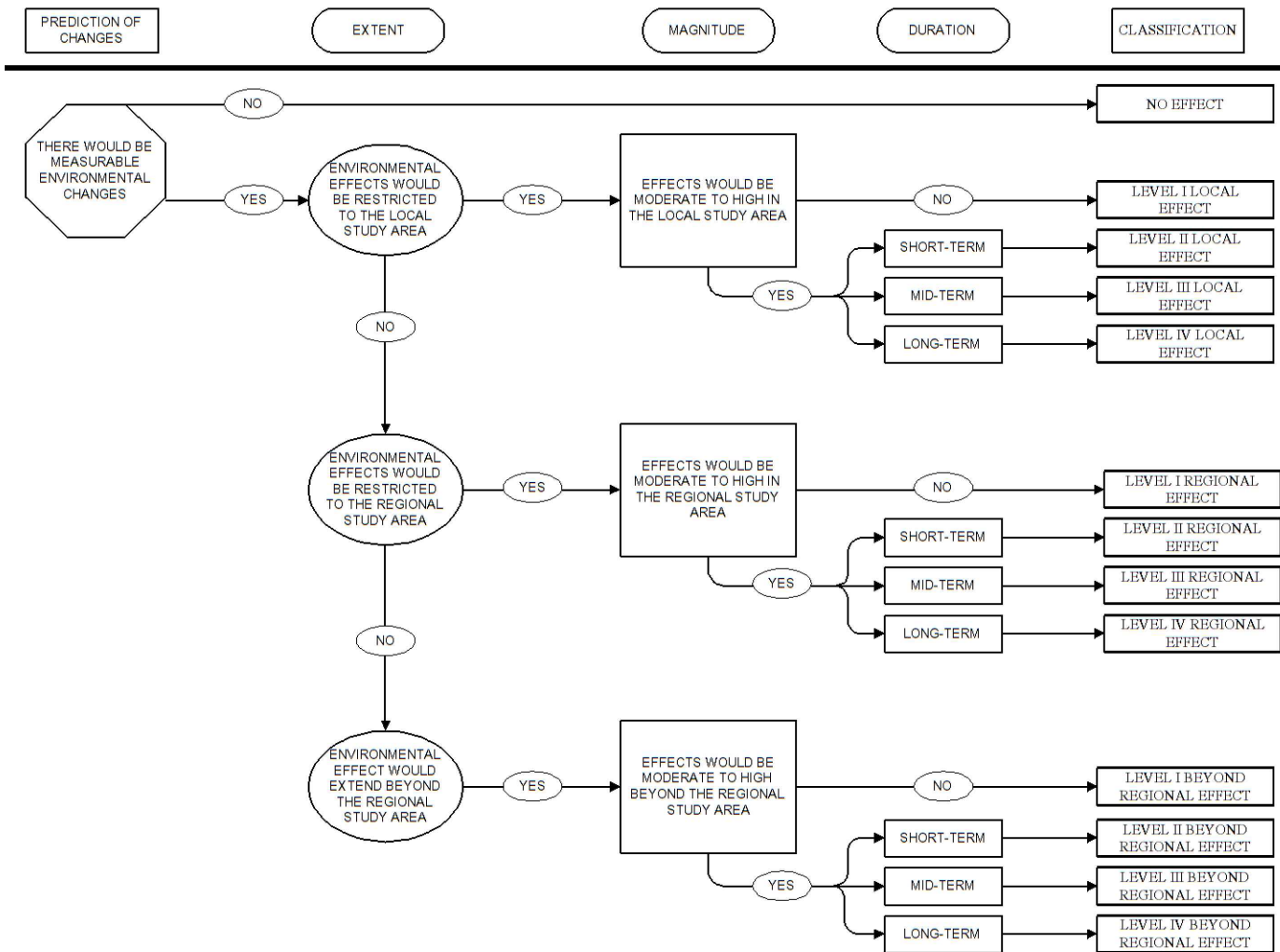
- HERITAGE RESOURCES
- AIR QUALITY
- WILDLIFE LOCAL
- FISH AND WATER
- VEGETATION AND TERRAIN

REFERENCE

NATIONAL TOPOGRAPHICAL DATA BASE SETS 76C AND 76D, FIRST EDITION
 SOURCE: Fedirchuk McCullough & Associates Ltd., 1995

PROJECT		DIAVIK DIAMOND MINES NORTHWEST TERRITORIES			
TITLE		LOCAL STUDY AREA			
PROJECT		1648005	FILE No.		11000-GC-0049
DESIGN	LJ	16/12/22	SCALE	AS SHOWN	REV. 0
CADD	VI	16/01/17	FIGURE: 9-2		
CHECK	LJ	18/04/17			
REVIEW	GM	18/04/17			




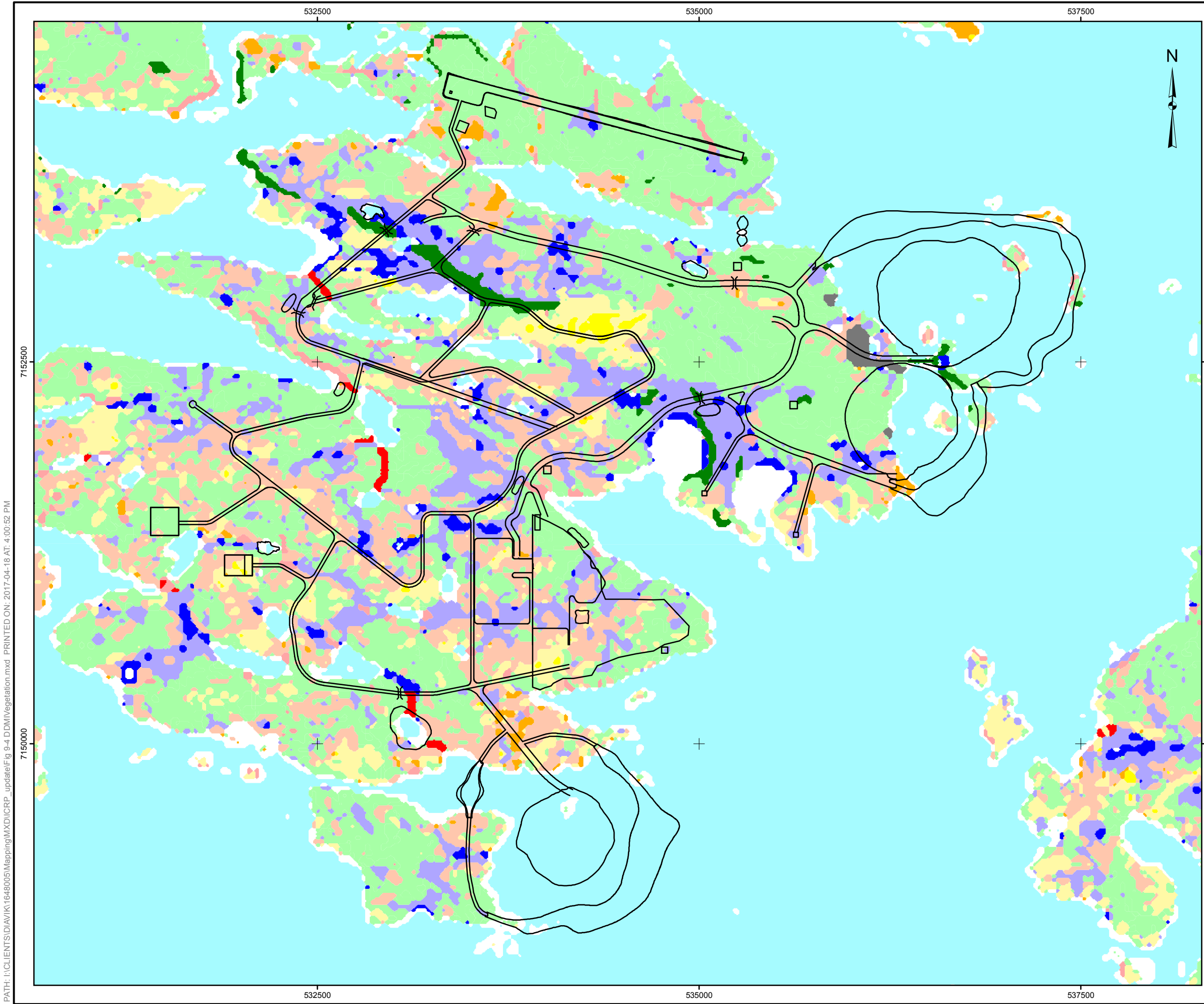


SCHEMATIC ONLY, NOT TO SCALE

NOTES:

1. AN EFFECT MAY BE CLASSIFIED FOR MORE THAN ONE STUDY AREA (E.G., A REGIONAL EFFECT MAY ALSO BE CLASSIFIED AS A LOCAL EFFECT).
2. EFFECT CLASSIFICATIONS ARE RANKED FROM I TO IV WITH LEVEL I BEING THE LOWEST EFFECT LEVEL AND LEVEL IV BEING THE HIGHEST EFFECT LEVEL.
3. ONLY ADVERSE EFFECTS ARE CLASSIFIED.

PROJECT					DIAVIK DIAMOND MINES NORTHWEST TERRITORIES									
TITLE										EFFECTS CLASSIFICATION FLOW CHART				
PROJECT No.		1648005			FILE No.		11000-GC-0050							
DESIGN	LJ	16/12/22			SCALE	AS SHOWN	REV.	0						
CADD	VI	16/01/17			 DIAVIK DIAMOND MINES INC.									
CHECK	LJ	18/04/17												
REVIEW	GM	18/04/17			FIGURE 9-3									



LEGEND

- DIAVIK FOOTPRINT
- LAND COVER CLASSIFICATION**
- HEATH TUNDRA
- HEATH TUNDRA 30-80% BEDROCK
- HEATH TUNDRA 30-80% BOULDERS
- TUSSOCK/HUMMOCK
- SEDGE WETLAND
- RIPARIAN TALL SHRUB
- BIRCH SEEP AND RIPARIAN SHORELINE SHRUB
- BOULDER COMPLEX (<80% ROCK)
- BEDROCK COMPLEX (<80% ROCK)
- SHALLOW WATER
- DEEP WATER
- HUMAN DISTURBANCE
- ESKER

REFERENCE
 PROJECTION: UTM ZONE 12 DATUM: NAD 83



PROJECT	DIAVIK DIAMOND MINES NORTHWEST TERRITORIES		
TITLE	VEGETATION LAND COVER WITHIN THE LOCAL STUDY AREA AND MAXIMUM MINE OPERATION (YEAR 2018)		
	PROJECT No. 1648005	SCALE AS SHOWN	REV. 0
	DESIGN TD 20 Nov. 2009	FIGURE: 9-4	
	GIS VV 18 Apr. 2017		
	CHECK LJ 18 Apr. 2017		
	REVIEW GM 18 Apr. 2017		

PATH: I:\CLIENTS\DIAMOND MINES\Mapping\DXD\ICRP_update\Fig 9-4.DDMVegetation.mxd PRINTED ON: 2017-04-18 AT: 4:00:52 PM